



Photomedin-1 Polyclonal Antibody

Catalog No	BYab-04082
Isotype	IgG
Reactivity	Human;Rat;Mouse;
Applications	WB;IHC
Gene Name	OLFML2A
Protein Name	Olfactomedin-like protein 2A
Immunogen	The antiserum was produced against synthesized peptide derived from human OLFML2A. AA range:311-360
Specificity	Photomedin-1 Polyclonal Antibody detects endogenous levels of Photomedin-1 protein.
Formulation	Liquid in PBS containing 50% glycerol, 0.5% BSA and 0.02% sodium azide.
Source	Polyclonal, Rabbit,IgG
Purification	The antibody was affinity-purified from rabbit antiserum by affinity-chromatography using epitope-specific immunogen.
Dilution	WB 1:500-2000;IHC-p 1:50-300
Concentration	1 mg/ml
Purity	≥90%
Storage Stability	-20°C/1 year
Synonyms	OLFML2A; Olfactomedin-like protein 2A; Photomedin-1
Observed Band	73kD
Cell Pathway	Secreted . Localizes to the podocyte major processes. Colocalized with the major process protein VIM throughout podocyte development. .
Tissue Specificity	In the kidney expressed only by podocytes, wherein they localize to major processes.
Function	PTM:May be cleaved at Lys-295 after secretion.,PTM:O-glycosylated but not N-glycosylated.,similarity:Contains 1 olfactomedin-like domain.,subunit:Homodimer. Binds to heparin and chondroitin sulfate E.,
Background	PTM:May be cleaved at Lys-295 after secretion.,PTM:O-glycosylated but not N-glycosylated.,similarity:Contains 1 olfactomedin-like domain.,subunit:Homodimer. Binds to heparin and chondroitin sulfate E.,
matters needing attention	Avoid repeated freezing and thawing!

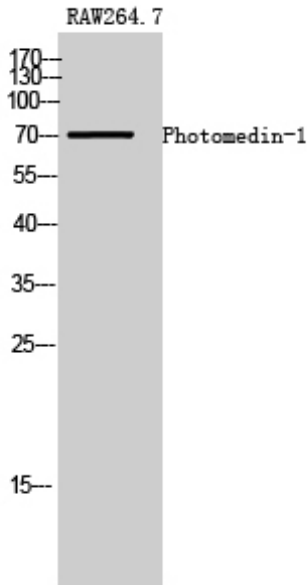
Nanjing BYabscience technology Co.,Ltd



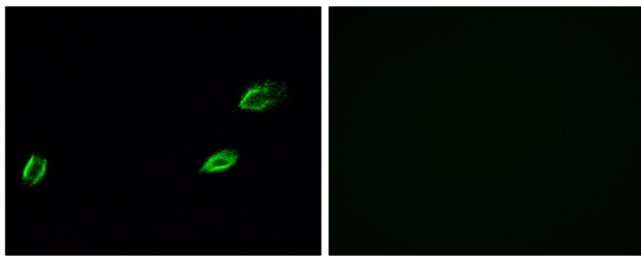
Usage suggestions

This product can be used in immunological reaction related experiments. For more information, please consult technical personnel.

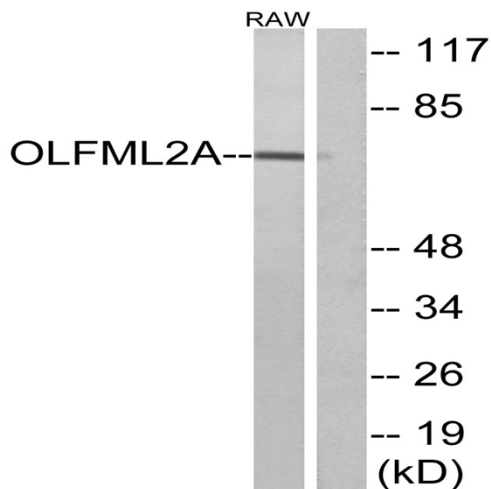
Products Images



Western Blot analysis of RAW264.7 cells using Photomedin-1 Polyclonal Antibody

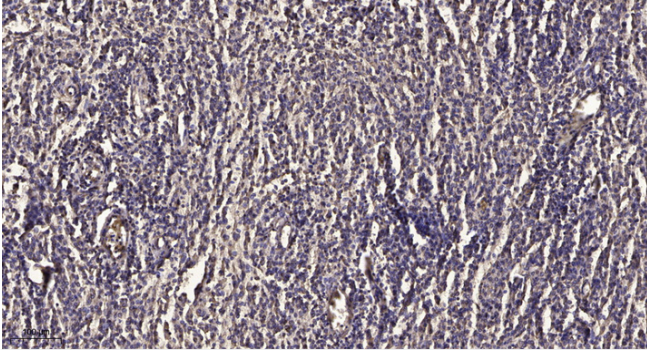


Immunofluorescence analysis of A549 cells, using OLFML2A Antibody. The picture on the right is blocked with the synthesized peptide.



Western blot analysis of lysates from RAW264.7 cells, using OLFML2A Antibody. The lane on the right is blocked with the synthesized peptide.

Nanjing BYabscience technology Co.,Ltd



Immunohistochemical analysis of paraffin-embedded human meningioma. 1, Antibody was diluted at 1:200(4 ° overnight). 2, Tris-EDTA,pH9.0 was used for antigen retrieval. 3,Secondary antibody was diluted at 1:200(room temperature, 45min).