



# PHI-1 Polyclonal Antibody

<b>Catalog No</b>	BYab-04079
<b>Isotype</b>	IgG
<b>Reactivity</b>	Human;Mouse;Rat
<b>Applications</b>	IHC;IF;ELISA
<b>Gene Name</b>	PPP1R14B
<b>Protein Name</b>	Protein phosphatase 1 regulatory subunit 14B
<b>Immunogen</b>	Synthesized peptide derived from PHI-1 . at AA range: 50-130
<b>Specificity</b>	PHI-1 Polyclonal Antibody detects endogenous levels of PHI-1 protein.
<b>Formulation</b>	Liquid in PBS containing 50% glycerol, 0.5% BSA and 0.02% sodium azide.
<b>Source</b>	Polyclonal, Rabbit,IgG
<b>Purification</b>	The antibody was affinity-purified from rabbit antiserum by affinity-chromatography using epitope-specific immunogen.
<b>Dilution</b>	IHC: 1/100 - 1/300. ELISA: 1/20000.. IF 1:50-200
<b>Concentration</b>	1 mg/ml
<b>Purity</b>	≥90%
<b>Storage Stability</b>	-20°C/1 year
<b>Synonyms</b>	PPP1R14B; PLCB3N; PNG; Protein phosphatase 1 regulatory subunit 14B; Phospholipase C-beta-3 neighbouring gene protein
<b>Observed Band</b>	
<b>Cell Pathway</b>	Cytoplasm .
<b>Tissue Specificity</b>	Ubiquitous. Expressed at low levels.
<b>Function</b>	function:Inhibitor of PPP1CA. Has over 50-fold higher inhibitory activity when phosphorylated.,PTM:Phosphorylated primarily on Thr-57 by PKC (in vitro). An unknown Ser is also phosphorylated by PKC (in vitro).,similarity:Belongs to the PP1 inhibitor family.,tissue specificity:Ubiquitous. Expressed at low levels.,
<b>Background</b>	function:Inhibitor of PPP1CA. Has over 50-fold higher inhibitory activity when phosphorylated.,PTM:Phosphorylated primarily on Thr-57 by PKC (in vitro). An unknown Ser is also phosphorylated by PKC (in vitro).,similarity:Belongs to the PP1 inhibitor family.,tissue specificity:Ubiquitous. Expressed at low levels.,

Nanjing BYabscience technology Co.,Ltd



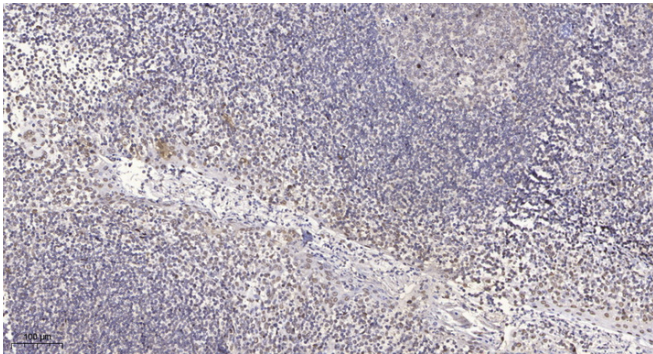
**matters needing attention**

Avoid repeated freezing and thawing!

**Usage suggestions**

This product can be used in immunological reaction related experiments. For more information, please consult technical personnel.

## Products Images



Immunohistochemical analysis of paraffin-embedded human tonsil. 1, Antibody was diluted at 1:200(4° overnight). 2, Tris-EDTA,pH9.0 was used for antigen retrieval. 3,Secondary antibody was diluted at 1:200(room temperature, 30min).