



PAR3A Polyclonal Antibody

Catalog No	BYab-04061
Isotype	IgG
Reactivity	Human;Mouse;Rat
Applications	WB;IHC;IF;ELISA
Gene Name	PAR3
Protein Name	Partitioning defective 3 homolog
Immunogen	The antiserum was produced against synthesized peptide derived from human PAR3. AA range:1141-1190
Specificity	PAR3A Polyclonal Antibody detects endogenous levels of PAR3A protein.
Formulation	Liquid in PBS containing 50% glycerol, 0.5% BSA and 0.02% sodium azide.
Source	Polyclonal, Rabbit,IgG
Purification	The antibody was affinity-purified from rabbit antiserum by affinity-chromatography using epitope-specific immunogen.
Dilution	Western Blot: 1/500 - 1/2000. Immunohistochemistry: 1/100 - 1/300. Immunofluorescence: 1/200 - 1/1000. ELISA: 1/20000. Not yet tested in other applications.
Concentration	1 mg/ml
Purity	≥90%
Storage Stability	-20°C/1 year
Synonyms	PAR3; PAR3; PAR3A; Partitioning defective 3 homolog; PAR-3; PAR3-3; Atypical PKC isotype-specific-interacting protein; ASIP; CTCL tumor antigen se2-5; PAR3-alpha
Observed Band	151kD
Cell Pathway	Cytoplasm . Endomembrane system . Cell junction . Cell junction, tight junction . Cell junction, adherens junction . Cell membrane . Cytoplasm, cell cortex . Cytoplasm, cytoskeleton . Localized along the cell-cell contact region. Colocalizes with PAR3A and PRKCI at epithelial tight junctions. Colocalizes with the cortical actin that overlays the meiotic spindle during metaphase I and metaphase II. Colocalized with SIRT2 in internode region of myelin sheath (By similarity). Presence of KRIT1, CDH5 and RAP1B is required for its localization to the cell junction. .
Tissue Specificity	Widely expressed.
Function	alternative products:Additional isoforms seem to exist. As a matter of fact,

Nanjing BYabscience technology Co.,Ltd



alternatively spliced products seem to fall into two broad groups: one group, which includes the longest continuous ORF but which may also include molecules lacking some middle domains, has a single TM element and is likely to be associated with the plasma membrane. The other group lacks a TM domain and thus its members may be secreted, disease: Defects in PKHD1 are the cause of polycystic kidney disease autosomal recessive (ARPKD) [MIM:263200]. ARPKD is a severe form of polycystic kidney disease affecting the kidneys and the hepatic biliary tract. The clinical spectrum is widely variable, with most cases presenting during infancy. The fetal phenotypic features classically include enlarged and echogenic kidneys, as well as oligohydramnios secondary to a poor urine output. Up to 50% of the affected neonates die sho

Background

This gene encodes a member of the PARD protein family. PARD family members interact with other PARD family members and other proteins; they affect asymmetrical cell division and direct polarized cell growth. Multiple alternatively spliced transcript variants have been described for this gene. [provided by RefSeq, Oct 2011],

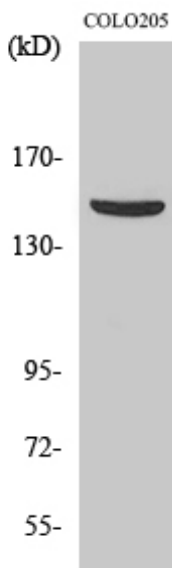
matters needing attention

Avoid repeated freezing and thawing!

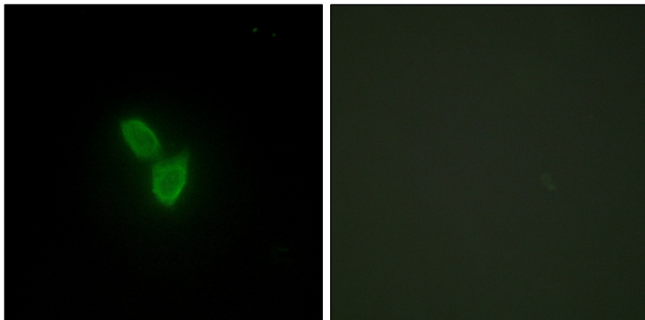
Usage suggestions

This product can be used in immunological reaction related experiments. For more information, please consult technical personnel.

Products Images

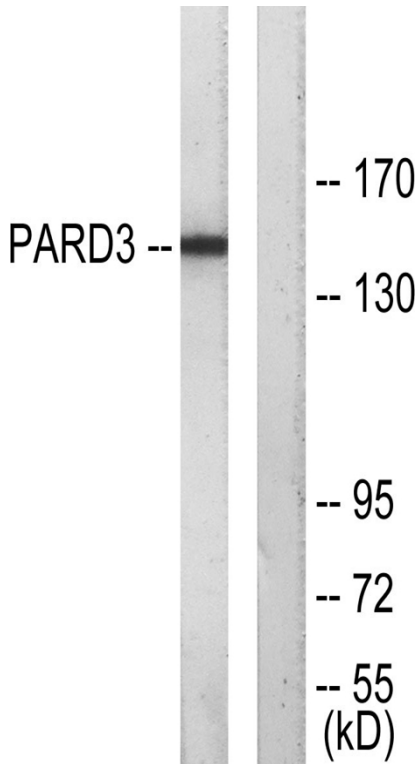


Western Blot analysis of various cells using PARD3A Polyclonal Antibody

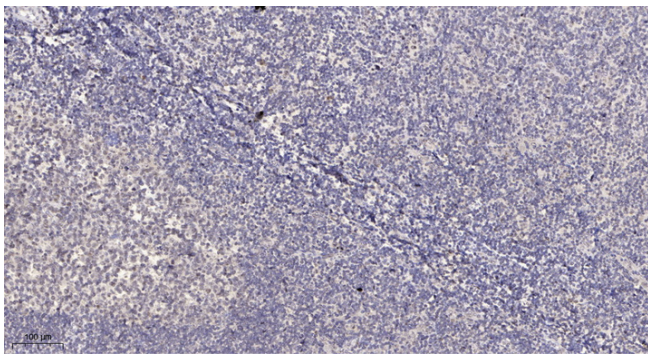


Immunofluorescence analysis of HepG2 cells, using PARD3 Antibody. The picture on the right is blocked with the synthesized peptide.

Nanjing BYabscience technology Co.,Ltd



Western blot analysis of lysates from COLO205 cells, using PARD3 Antibody. The lane on the right is blocked with the synthesized peptide.



Immunohistochemical analysis of paraffin-embedded human tonsil. 1, Antibody was diluted at 1:200(4° overnight). 2, Tris-EDTA,pH9.0 was used for antigen retrieval. 3,Secondary antibody was diluted at 1:200(room temperature, 30min).