



PAR-6 β Polyclonal Antibody

Catalog No	BYab-04060
Isotype	IgG
Reactivity	Human;Mouse
Applications	WB;IHC;IF;ELISA
Gene Name	PARD6B
Protein Name	Partitioning defective 6 homolog beta
Immunogen	The antiserum was produced against synthesized peptide derived from human PARD6B. AA range:233-282
Specificity	PAR-6 β Polyclonal Antibody detects endogenous levels of PAR-6 β protein.
Formulation	Liquid in PBS containing 50% glycerol, 0.5% BSA and 0.02% sodium azide.
Source	Polyclonal, Rabbit,IgG
Purification	The antibody was affinity-purified from rabbit antiserum by affinity-chromatography using epitope-specific immunogen.
Dilution	WB: 1/500 - 1/2000. IHC: 1/100 - 1/300. ELISA: 1/5000.. IF 1:50-200
Concentration	1 mg/ml
Purity	$\geq 90\%$
Storage Stability	-20°C/1 year
Synonyms	PARD6B; PAR6B; Partitioning defective 6 homolog beta; PAR-6 beta; PAR-6B
Observed Band	38kD
Cell Pathway	Cytoplasm. Cell membrane . Cell junction, tight junction .
Tissue Specificity	Expressed in pancreas and in both adult and fetal kidney. Weakly expressed in placenta and lung. Not expressed in other tissues.
Function	domain:The PDZ domain mediates interaction with MPP5.,domain:The pseudo-CRIB domain together with the PDZ domain is required for the interaction with Rho small GTPases.,function:Adapter protein involved in asymmetrical cell division and cell polarization processes. Probably involved in formation of epithelial tight junctions. Association with PARD3 may prevent the interaction of PARD3 with F11R/JAM1, thereby preventing tight junction assembly. The PARD6-PARD3 complex links GTP-bound Rho small GTPases to atypical protein kinase C proteins.,similarity:Belongs to the PAR6 family.,similarity:Contains 1 OPR domain.,similarity:Contains 1 PDZ (DHR) domain.,similarity:Contains 1 pseudo-CRIB domain.,subunit:Interacts with PARD3. Interacts with GTP-bound forms of CDC42 and RAC1. Interacts with GTP-bound ARHQ/TC10. Interacts with

Nanjing BYabscience technology Co.,Ltd



MPP5 (By similarity). Interacts with the N-terminal part of PRKCI and

Background

This gene is a member of the PAR6 family and encodes a protein with a PSD95/Discs-large/ZO1 (PDZ) domain, an OPR domain and a semi-Cdc42/Rac interactive binding (CRIB) domain. This cytoplasmic protein is involved in asymmetrical cell division and cell polarization processes as a member of a multi-protein complex. [provided by RefSeq, Jul 2008],

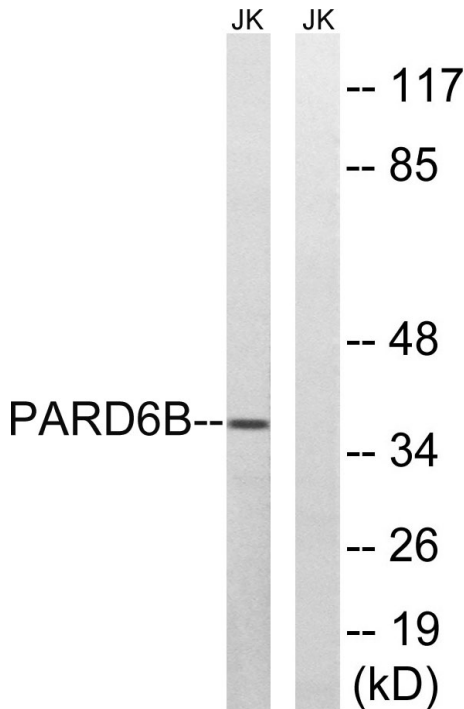
matters needing attention

Avoid repeated freezing and thawing!

Usage suggestions

This product can be used in immunological reaction related experiments. For more information, please consult technical personnel.

Products Images



Western blot analysis of lysates from Jurkat cells, using PAR6B Antibody. The lane on the right is blocked with the synthesized peptide.