



# PABP5 Polyclonal Antibody

<b>Catalog No</b>	BYab-04056
<b>Isotype</b>	IgG
<b>Reactivity</b>	Human;Rat;Mouse;
<b>Applications</b>	WB;IHC;IF;ELISA
<b>Gene Name</b>	PABPC5
<b>Protein Name</b>	Polyadenylate-binding protein 5
<b>Immunogen</b>	The antiserum was produced against synthesized peptide derived from human PABPC5. AA range:184-233
<b>Specificity</b>	PABP5 Polyclonal Antibody detects endogenous levels of PABP5 protein.
<b>Formulation</b>	Liquid in PBS containing 50% glycerol, 0.5% BSA and 0.02% sodium azide.
<b>Source</b>	Polyclonal, Rabbit,IgG
<b>Purification</b>	The antibody was affinity-purified from rabbit antiserum by affinity-chromatography using epitope-specific immunogen.
<b>Dilution</b>	WB: 1/500 - 1/2000. IHC: 1/100 - 1/300. ELISA: 1/10000.. IF 1:50-200
<b>Concentration</b>	1 mg/ml
<b>Purity</b>	≥90%
<b>Storage Stability</b>	-20°C/1 year
<b>Synonyms</b>	PABPC5; PABP5; Polyadenylate-binding protein 5; PABP-5; Poly(A)-binding protein 5
<b>Observed Band</b>	43kD
<b>Cell Pathway</b>	Cytoplasm .; [Isoform 2]: Mitochondrion matrix . Co-fractionates with mtDNA and co-immunoprecipitates with the mitochondrial poly(A) polymerase.
<b>Tissue Specificity</b>	Expressed in fetal brain and in a range of adult tissues.
<b>Function</b>	function: Binds the poly(A) tail of mRNA. May be involved in cytoplasmic regulatory processes of mRNA metabolism. Can probably bind to cytoplasmic RNA sequences other than poly(A) in vivo., similarity: Contains 4 RRM (RNA recognition motif) domains., tissue specificity: Expressed in fetal brain and in a range of adult tissues.,
<b>Background</b>	This gene encodes a protein that binds to the polyA tail found at the 3' end of most eukaryotic mRNAs. It is thought to play a role in the regulation of mRNA metabolic processes in the cytoplasm. This gene is located in a gene-poor region within the X-specific 13d-sY43 subinterval of the chromosome Xq21.3/Yp11.2

Nanjing BYabscience technology Co.,Ltd



homology block. It is located close to translocation breakpoints associated with premature ovarian failure, and is therefore a potential candidate gene for this disorder. [provided by RefSeq, May 2010],

**matters needing attention**

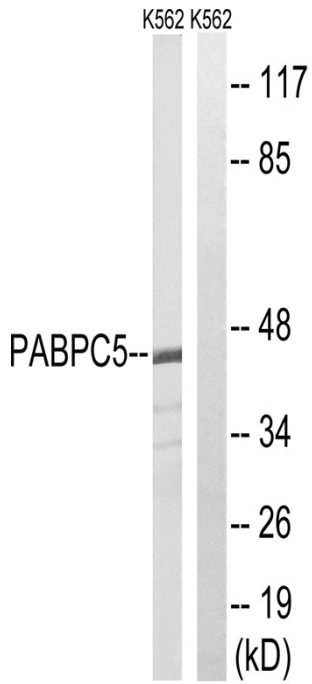
Avoid repeated freezing and thawing!

**Usage suggestions**

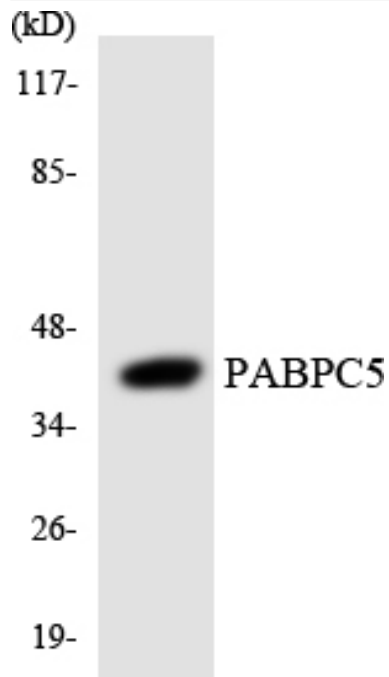
This product can be used in immunological reaction related experiments. For more information, please consult technical personnel.



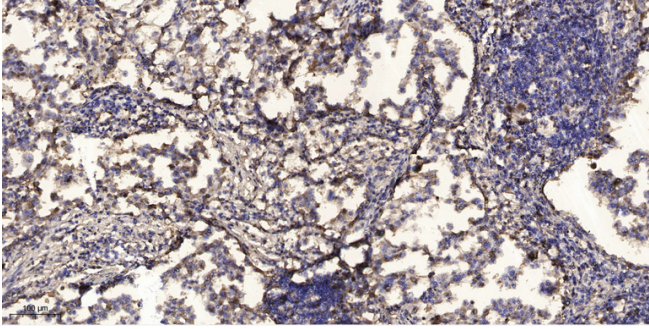
## Products Images



Western blot analysis of lysates from K562 cells, using PABPC5 Antibody. The lane on the right is blocked with the synthesized peptide.



Western blot analysis of the lysates from HeLa cells using PABPC5 antibody.



Immunohistochemical analysis of paraffin-embedded human Squamous cell carcinoma of lung. 1, Antibody was diluted at 1:200(4° overnight). 2, Tris-EDTA,pH9.0 was used for antigen retrieval. 3,Secondary antibody was diluted at 1:200(room temperature, 45min).