



p140Cap Polyclonal Antibody

Catalog No	BYab-04054
Isotype	IgG
Reactivity	Human;Mouse;Rat
Applications	WB;ELISA
Gene Name	SRCIN1
Protein Name	SRC kinase signaling inhibitor 1
Immunogen	The antiserum was produced against synthesized peptide derived from human SNIP. AA range:811-860
Specificity	p140Cap Polyclonal Antibody detects endogenous levels of p140Cap protein.
Formulation	Liquid in PBS containing 50% glycerol, 0.5% BSA and 0.02% sodium azide.
Source	Polyclonal, Rabbit,IgG
Purification	The antibody was affinity-purified from rabbit antiserum by affinity-chromatography using epitope-specific immunogen.
Dilution	Western Blot: 1/500 - 1/2000. ELISA: 1/20000. Not yet tested in other applications.
Concentration	1 mg/ml
Purity	≥90%
Storage Stability	-20°C/1 year
Synonyms	SRCIN1; KIAA1684; P140; SRC kinase signaling inhibitor 1; SNAP-25-interacting protein; SNIP; p130Cas-associated protein; p140Cap
Observed Band	112kD
Cell Pathway	Cytoplasm . Cytoplasm, cytoskeleton . Cell projection, axon . Cell projection, dendrite . Cell junction, synapse, presynapse . Cell junction, synapse, postsynapse . Cell junction, synapse, postsynaptic density . Localized to the perinuclear region, lamellopodia, cortical actin and actin stress fibers but not to focal adhesions. Strongly expressed in axons and dendrites of the CA1 and CA3 hippocampal regions and of the dentate gyrus. Detected in both presynapses and postsynapses and enriched in postsynaptic density fractions. .
Tissue Specificity	Expressed in some primary breast carcinomas where its presence is significantly associated with increased tumor size. Not detected in normal breast tissue.
Function	function:Delays the onset of cell spreading in the early stages of cell adhesion to fibronectin. Also involved in calcium-dependent exocytosis from PC12 cells.,PTM:Tyrosine-phosphorylated in response to EGF and to cell adhesion to integrin ligands.,similarity:Belongs to the p140Cap family.,subcellular location:Localized to the perinuclear region, lamellopodia, cortical actin and actin

Nanjing BYabscience technology Co.,Ltd

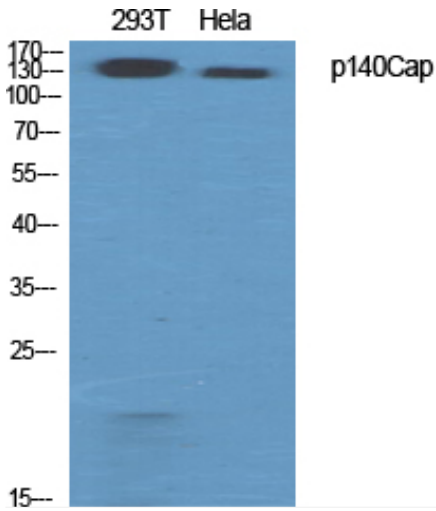


	stress fibers but not to focal adhesions.,subunit:Interacts with the N-terminal coiled-coil region of SNAP25 (By similarity). Interacts with BCAR1/p130Cas through its C-terminal domain.,
Background	function:Delays the onset of cell spreading in the early stages of cell adhesion to fibronectin. Also involved in calcium-dependent exocytosis from PC12 cells.,PTM:Tyrosine-phosphorylated in response to EGF and to cell adhesion to integrin ligands.,similarity:Belongs to the p140Cap family.,subcellular location:Localized to the perinuclear region, lamellopodia, cortical actin and actin stress fibers but not to focal adhesions.,subunit:Interacts with the N-terminal coiled-coil region of SNAP25 (By similarity). Interacts with BCAR1/p130Cas through its C-terminal domain.,
matters needing attention	Avoid repeated freezing and thawing!
Usage suggestions	This product can be used in immunological reaction related experiments. For more information, please consult technical personnel.

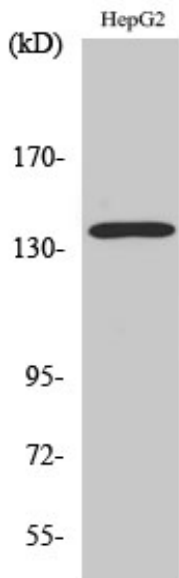
Nanjing BYabscience technology Co.,Ltd



Products Images



Western Blot analysis of various cells using p140Cap Polyclonal Antibody diluted at 1:500



Western Blot analysis of HeLa cells using p140Cap Polyclonal Antibody diluted at 1:500