



O-FucT-1 Polyclonal Antibody

Catalog No	BYab-04047
Isotype	IgG
Reactivity	Human;Mouse;Rat
Applications	WB;IHC;IF;ELISA
Gene Name	POFUT1
Protein Name	GDP-fucose protein O-fucosyltransferase 1
Immunogen	The antiserum was produced against synthesized peptide derived from human POFUT1. AA range:331-380
Specificity	O-FucT-1 Polyclonal Antibody detects endogenous levels of O-FucT-1 protein.
Formulation	Liquid in PBS containing 50% glycerol, 0.5% BSA and 0.02% sodium azide.
Source	Polyclonal, Rabbit,IgG
Purification	The antibody was affinity-purified from rabbit antiserum by affinity-chromatography using epitope-specific immunogen.
Dilution	WB: 1/500 - 1/2000. IHC: 1/100 - 1/300. ELISA: 1/40000.. IF 1:50-200
Concentration	1 mg/ml
Purity	≥90%
Storage Stability	-20°C/1 year
Synonyms	POFUT1; FUT12; KIAA0180; GDP-fucose protein O-fucosyltransferase 1; Peptide-O-fucosyltransferase 1; O-FucT-1
Observed Band	44kD
Cell Pathway	Endoplasmic reticulum .
Tissue Specificity	Highly expressed in heart, brain, placenta, lung, liver, skeletal muscle, kidney and pancreas.
Function	catalytic activity:Transfers an alpha-L-fucosyl residue from GDP-beta-L-fucose to the serine hydroxy group of a protein acceptor.,cofactor:Manganese.,function:Catalyzes the reaction that attaches fucose through an O-glycosidic linkage to a conserved serine or threonine residue in EGF domains. Plays a crucial role in Notch signaling.,online information:GlycoGene database,online information:Peptide-O-fucosyltransferase 1,pathway:Protein modification; protein glycosylation.,similarity:Belongs to the glycosyltransferase 68 family.,tissue specificity:Highly expressed in heart, brain, placenta, lung, liver, skeletal muscle, kidney and pancreas.,

Nanjing BYabscience technology Co.,Ltd



Background

This gene encodes a member of the glycosyltransferase O-Fuc family. This enzyme adds O-fucose through an O-glycosidic linkage to conserved serine or threonine residues in the epidermal growth factor-like repeats of a number of cell surface and secreted proteins. O-fucose glycans are involved in ligand-induced receptor signaling. Alternative splicing of this gene results in two transcript variants encoding different isoforms. [provided by RefSeq, Jul 2008],

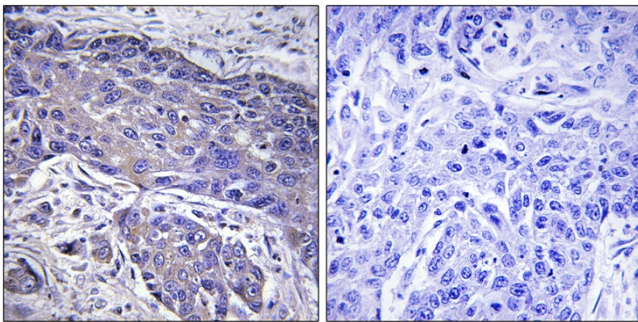
matters needing attention

Avoid repeated freezing and thawing!

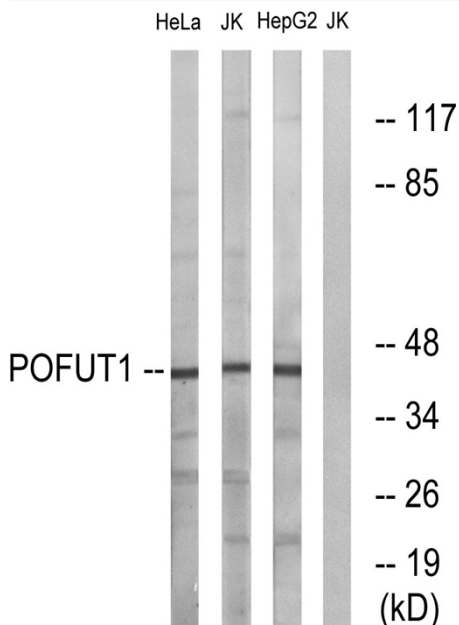
Usage suggestions

This product can be used in immunological reaction related experiments. For more information, please consult technical personnel.

Products Images



Immunohistochemistry analysis of paraffin-embedded human lung carcinoma tissue, using POFUT1 Antibody. The picture on the right is blocked with the synthesized peptide.



Western blot analysis of lysates from Jurkat, HeLa, and HepG2 cells, using POFUT1 Antibody. The lane on the right is blocked with the synthesized peptide.

Nanjing BYabscience technology Co.,Ltd