



NOM1 Polyclonal Antibody

Catalog No	BYab-04043
Isotype	IgG
Reactivity	Human;Mouse
Applications	IHC;IF;ELISA
Gene Name	NOM1
Protein Name	Nucleolar MIF4G domain-containing protein 1
Immunogen	The antiserum was produced against synthesized peptide derived from human NOM1. AA range:661-710
Specificity	NOM1 Polyclonal Antibody detects endogenous levels of NOM1 protein.
Formulation	Liquid in PBS containing 50% glycerol, 0.5% BSA and 0.02% sodium azide.
Source	Polyclonal, Rabbit,IgG
Purification	The antibody was affinity-purified from rabbit antiserum by affinity-chromatography using epitope-specific immunogen.
Dilution	IHC: 1/100 - 1/300. ELISA: 1/40000.. IF 1:50-200
Concentration	1 mg/ml
Purity	≥90%
Storage Stability	-20°C/1 year
Synonyms	NOM1; C7orf3; Nucleolar MIF4G domain-containing protein 1; SGD1 homolog
Observed Band	
Cell Pathway	Nucleus, nucleolus .
Tissue Specificity	Expressed in heart and skeletal muscle.
Function	similarity:Belongs to the CWC22 family.,similarity:Contains 1 MI domain.,similarity:Contains 1 MIF4G domain.,subunit:May interact with EIF4A1, EIF4A2 and EIF4A3.,tissue specificity:Expressed in heart and skeletal muscle.,
Background	Proteins that contain MIF4G (middle of eIF4G (MIM 600495)) and/or MA3 domains, such as NOM1, function in protein translation. These domains include binding sites for members of the EIF4A family of ATP-dependent DEAD box RNA helicases (see EIF4A1; MIM 602641) (Simmons et al., 2005 [PubMed 15715967]).[supplied by OMIM, Mar 2008],

Nanjing BYabscience technology Co.,Ltd



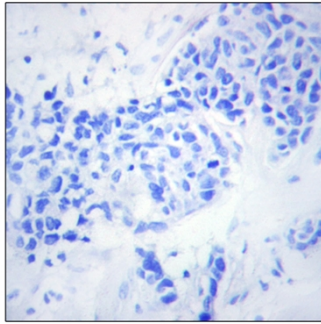
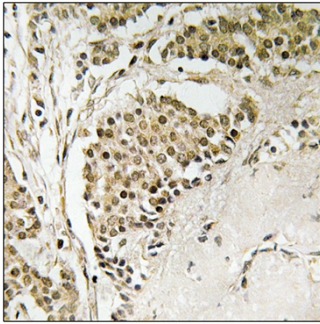
matters needing attention

Avoid repeated freezing and thawing!

Usage suggestions

This product can be used in immunological reaction related experiments. For more information, please consult technical personnel.

Products Images



Immunohistochemistry analysis of paraffin-embedded human breast carcinoma tissue, using NOM1 Antibody. The picture on the right is blocked with the synthesized peptide.