



NOC2L Polyclonal Antibody

Catalog No	BYab-04041
Isotype	IgG
Reactivity	Human;Mouse;Rat
Applications	WB;IHC;IF;ELISA
Gene Name	NOC2L
Protein Name	Nucleolar complex protein 2 homolog
Immunogen	The antiserum was produced against synthesized peptide derived from human NOC2L. AA range:602-651
Specificity	NOC2L Polyclonal Antibody detects endogenous levels of NOC2L protein.
Formulation	Liquid in PBS containing 50% glycerol, 0.5% BSA and 0.02% sodium azide.
Source	Polyclonal, Rabbit,IgG
Purification	The antibody was affinity-purified from rabbit antiserum by affinity-chromatography using epitope-specific immunogen.
Dilution	WB: 1/500 - 1/2000. IHC: 1/100 - 1/300. ELISA: 1/40000.. IF 1:50-200
Concentration	1 mg/ml
Purity	≥90%
Storage Stability	-20°C/1 year
Synonyms	NOC2L; NIR; Nucleolar complex protein 2 homolog; Protein NOC2 homolog; NOC2-like protein; Novel INHAT repressor
Observed Band	85kD
Cell Pathway	Nucleus, nucleoplasm. Nucleus, nucleolus. Translocates from the nucleoli to the nucleoplasm in presence of several stressors like ultraviolet irradiation and actinomycin-D. Predominantly detected in the nucleoli in non-mitotic cells. Predominantly detected in nucleoplasm in cells undergoing mitosis.
Tissue Specificity	Brain,Epithelium,Placenta,
Function	similarity:Belongs to the NOC2 family.,
Background	NOC2 like nucleolar associated transcriptional repressor(NOC2L) Homo sapiens Histone modification by histone acetyltransferases (HAT) and histone deacetylases (HDAC) can control major aspects of transcriptional regulation. NOC2L represents a novel HDAC-independent inhibitor of histone acetyltransferase (INHAT) (Hublitz et al., 2005 [PubMed 16322561]).[supplied by OMIM, Mar 2008],

Nanjing BYabscience technology Co.,Ltd



matters needing attention

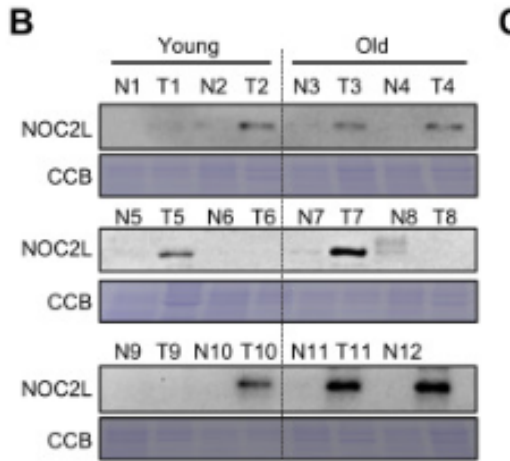
Avoid repeated freezing and thawing!

Usage suggestions

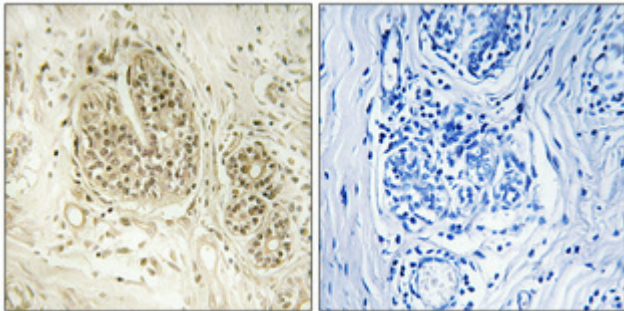
This product can be used in immunological reaction related experiments. For more information, please consult technical personnel.



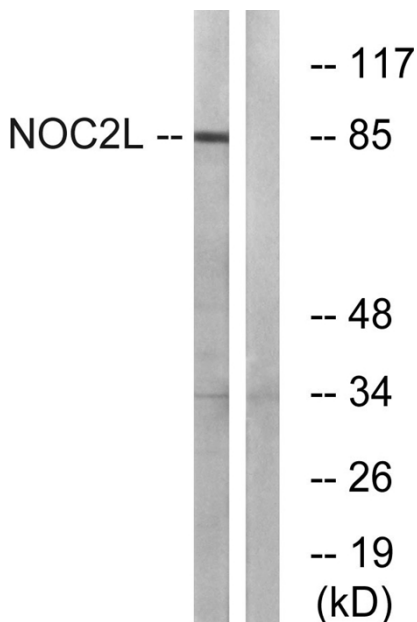
Products Images



Gong, Yanqiu, et al. "Age-Associated Proteomic Signatures and Potential Clinically Actionable Targets of Colorectal Cancer." *Molecular & Cellular Proteomics* (2021): 100115.



Immunohistochemical analysis of paraffin-embedded Human breast cancer. Antibody was diluted at 1:100(4° overnight). High-pressure and temperature Tris-EDTA, pH8.0 was used for antigen retrieval. Negative control (right) obtained from antibody was pre-absorbed by immunogen peptide.



Western blot analysis of lysates from MCF-7 cells, using NOC2L Antibody. The lane on the right is blocked with the synthesized peptide.