



MYPT3 Polyclonal Antibody

Catalog No	BYab-04026
Isotype	IgG
Reactivity	Human;Rat;Mouse;
Applications	WB;IF;ELISA;IHC
Gene Name	PPP1R16A
Protein Name	Protein phosphatase 1 regulatory subunit 16A
Immunogen	The antiserum was produced against synthesized peptide derived from human PPP1R16A. AA range:362-411
Specificity	MYPT3 Polyclonal Antibody detects endogenous levels of MYPT3 protein.
Formulation	Liquid in PBS containing 50% glycerol, 0.5% BSA and 0.02% sodium azide.
Source	Polyclonal, Rabbit,IgG
Purification	The antibody was affinity-purified from rabbit antiserum by affinity-chromatography using epitope-specific immunogen.
Dilution	WB 1:500-2000; IF/ICC 1:50-200;ELISA 1:2000-20000;IHC-p 1:50-200
Concentration	1 mg/ml
Purity	≥90%
Storage Stability	-20°C/1 year
Synonyms	PPP1R16A; MYPT3; Protein phosphatase 1 regulatory subunit 16A; Myosin phosphatase-targeting subunit 3
Observed Band	60kD
Cell Pathway	Cell membrane ; Lipid-anchor .
Tissue Specificity	Lung,Placenta,Spleen,Uterus,
Function	function:Inhibits protein phosphatase 1 activity toward phosphorylase, myosin light chain and myosin substrates.,sequence caution:Cloning artifact.,similarity:Contains 5 ANK repeats.,subunit:Binds PP1.,
Background	Myosin light chain kinase and phosphatase (MLCP) complexes control the phosphorylation states of regulatory myosin light chains, which is crucial for muscle and intracellular movement. MLCPs typically contain a catalytic protein phosphatase 1 (PP1c) subunit, a myosin phosphatase targeting (MYPT) subunit, and another smaller subunit. The protein encoded by this gene represents an MYPT subunit, which is responsible for directing PP1c to its intended targets. However, while other MYPTs result in PP1c activation after becoming

Nanjing BYabscience technology Co.,Ltd



phosphorylated, the encoded protein is phosphorylated by protein kinase A and then inhibits the catalytic activity of PP1c. [provided by RefSeq, Jul 2016],

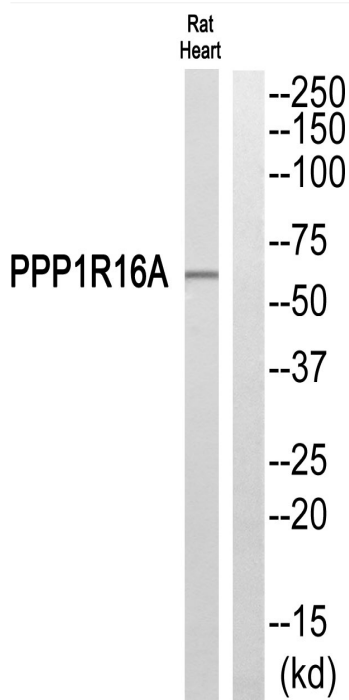
matters needing attention

Avoid repeated freezing and thawing!

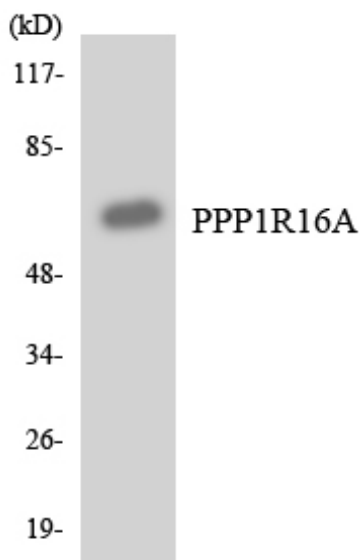
Usage suggestions

This product can be used in immunological reaction related experiments. For more information, please consult technical personnel.

Products Images

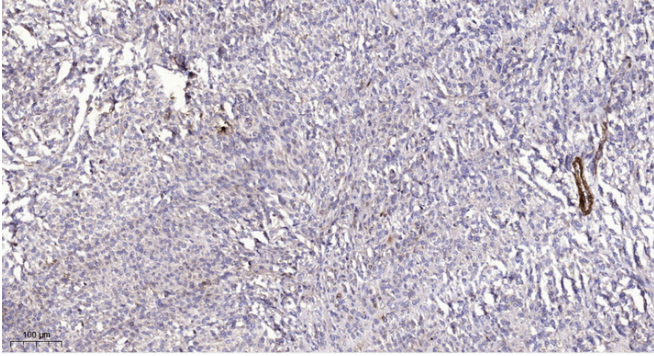


Western blot analysis of PPP1R16A Antibody. The lane on the right is blocked with the PPP1R16A peptide.



Western blot analysis of the lysates from HeLa cells using PPP1R16A antibody.

Nanjing BYabscience technology Co.,Ltd



Immunohistochemical analysis of paraffin-embedded human Colon cancer. 1, Antibody was diluted at 1:200(4° overnight). 2, Tris-EDTA,pH9.0 was used for antigen retrieval. 3,Secondary antibody was diluted at 1:200(room temperature, 45min).