



# MRP-S36 Polyclonal Antibody

<b>Catalog No</b>	BYab-04020
<b>Isotype</b>	IgG
<b>Reactivity</b>	Human;Rat;Mouse;
<b>Applications</b>	WB;IHC;IF;ELISA
<b>Gene Name</b>	MRPS36
<b>Protein Name</b>	28S ribosomal protein S36 mitochondrial
<b>Immunogen</b>	The antiserum was produced against synthesized peptide derived from human MRPS36. AA range:4-53
<b>Specificity</b>	MRP-S36 Polyclonal Antibody detects endogenous levels of MRP-S36 protein.
<b>Formulation</b>	Liquid in PBS containing 50% glycerol, 0.5% BSA and 0.02% sodium azide.
<b>Source</b>	Polyclonal, Rabbit,IgG
<b>Purification</b>	The antibody was affinity-purified from rabbit antiserum by affinity-chromatography using epitope-specific immunogen.
<b>Dilution</b>	WB: 1/500 - 1/2000. IHC: 1/100 - 1/300. ELISA: 1/10000.. IF 1:50-200
<b>Concentration</b>	1 mg/ml
<b>Purity</b>	≥90%
<b>Storage Stability</b>	-20°C/1 year
<b>Synonyms</b>	MRPS36; DC47; 28S ribosomal protein S36; mitochondrial; MRP-S36; S36mt
<b>Observed Band</b>	15kD
<b>Cell Pathway</b>	Mitochondrion .
<b>Tissue Specificity</b>	Dendritic cell,Kidney,Prostate,
<b>Function</b>	subunit:Component of the mitochondrial ribosome small subunit (28S) which comprises a 12S rRNA and about 30 distinct proteins.,
<b>Background</b>	Mammalian mitochondrial ribosomal proteins are encoded by nuclear genes and help in protein synthesis within the mitochondrion. The mitochondrial ribosome (mitoribosome) consists of a small 28S subunit and a large 39S subunit. They have an estimated 75% protein to rRNA composition compared to prokaryotic ribosomes, where this ratio is reversed. Another difference between mammalian mitoribosomes and prokaryotic ribosomes is that the latter contain a 5S rRNA. Among different species, the proteins comprising the mitoribosome differ greatly in sequence, and sometimes in biochemical properties, which prevents easy

Nanjing BYabscience technology Co.,Ltd



recognition by sequence homology. This gene encodes a 28S subunit protein. Pseudogenes corresponding to this gene are found on chromosomes 3p, 4q, 8p, 11q, 12q, and 20p. [provided by RefSeq, Jul 2008],

**matters needing attention**

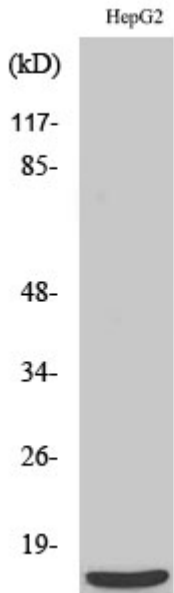
Avoid repeated freezing and thawing!

**Usage suggestions**

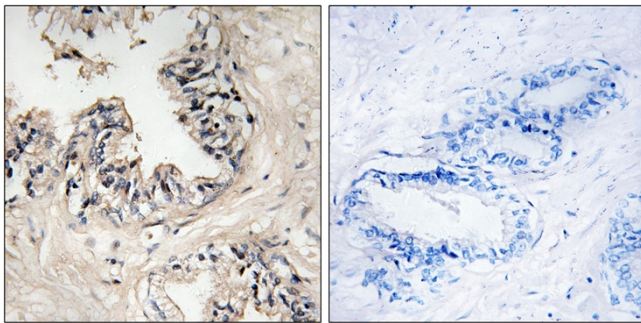
This product can be used in immunological reaction related experiments. For more information, please consult technical personnel.



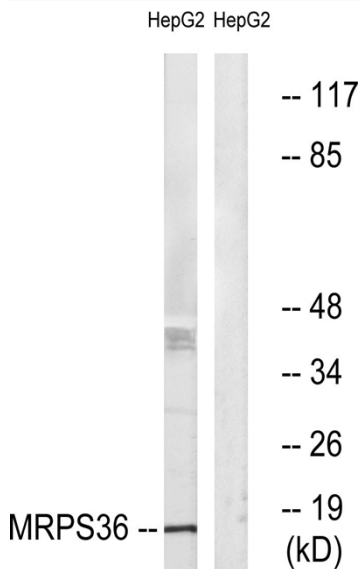
## Products Images



Western Blot analysis of various cells using MRP-S36 Polyclonal Antibody

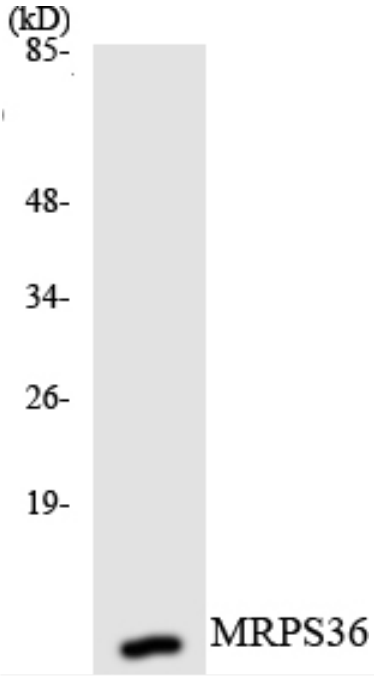


Immunohistochemistry analysis of paraffin-embedded human prostate carcinoma tissue, using MRPS36 Antibody. The picture on the right is blocked with the synthesized peptide.



Western blot analysis of lysates from HepG2 cells, using MRPS36 Antibody. The lane on the right is blocked with the synthesized peptide.

Nanjing BYabscience technology Co.,Ltd



Western blot analysis of the lysates from K562 cells using MRPS36 antibody.