



MRP-S35 Polyclonal Antibody

Catalog No	BYab-04019
Isotype	IgG
Reactivity	Human;Rat;Mouse;
Applications	WB;IHC;IF;ELISA
Gene Name	MRPS35
Protein Name	28S ribosomal protein S35 mitochondrial
Immunogen	The antiserum was produced against synthesized peptide derived from human MRPS35. AA range:211-260
Specificity	MRP-S35 Polyclonal Antibody detects endogenous levels of MRP-S35 protein.
Formulation	Liquid in PBS containing 50% glycerol, 0.5% BSA and 0.02% sodium azide.
Source	Polyclonal, Rabbit,IgG
Purification	The antibody was affinity-purified from rabbit antiserum by affinity-chromatography using epitope-specific immunogen.
Dilution	WB: 1/500 - 1/2000. IHC: 1/100 - 1/300. ELISA: 1/40000.. IF 1:50-200
Concentration	1 mg/ml
Purity	≥90%
Storage Stability	-20°C/1 year
Synonyms	MRPS35; MRPS28; HDCMD11P; MDS023; PSEC0213; 28S ribosomal protein S35; mitochondrial; MRP-S35; S35mt; 28S ribosomal protein S28, mitochondrial; MRP-S28; S28mt
Observed Band	40kD
Cell Pathway	Mitochondrion .
Tissue Specificity	Colon,Dendritic cell,Embryo,Hematopoietic stem cell,Lung,Melanoma,P
Function	subunit:Component of the mitochondrial ribosome small subunit (28S) which comprises a 12S rRNA and about 30 distinct proteins.,
Background	Mammalian mitochondrial ribosomal proteins are encoded by nuclear genes and help in protein synthesis within the mitochondrion. Mitochondrial ribosomes (mitoribosomes) consist of a small 28S subunit and a large 39S subunit. They have an estimated 75% protein to rRNA composition compared to prokaryotic ribosomes, where this ratio is reversed. Another difference between mammalian mitoribosomes and prokaryotic ribosomes is that the latter contain a 5S rRNA.

Nanjing BYabscience technology Co.,Ltd



Among different species, the proteins comprising the mitoribosome differ greatly in sequence, and sometimes in biochemical properties, which prevents easy recognition by sequence homology. This gene encodes a 28S subunit protein that has had confusing nomenclature in the literature. Alternatively spliced transcript variants encoding different isoforms have been found for this gene. Pseudogenes corresponding to this gene are found on

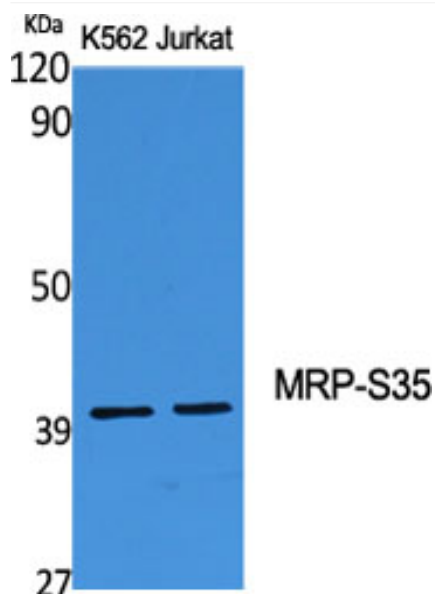
matters needing attention

Avoid repeated freezing and thawing!

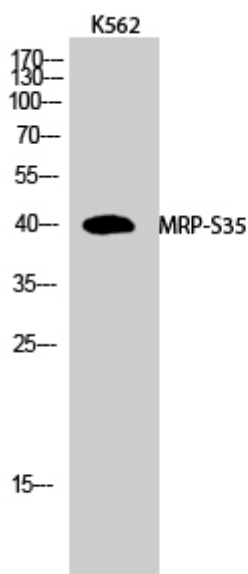
Usage suggestions

This product can be used in immunological reaction related experiments. For more information, please consult technical personnel.

Products Images

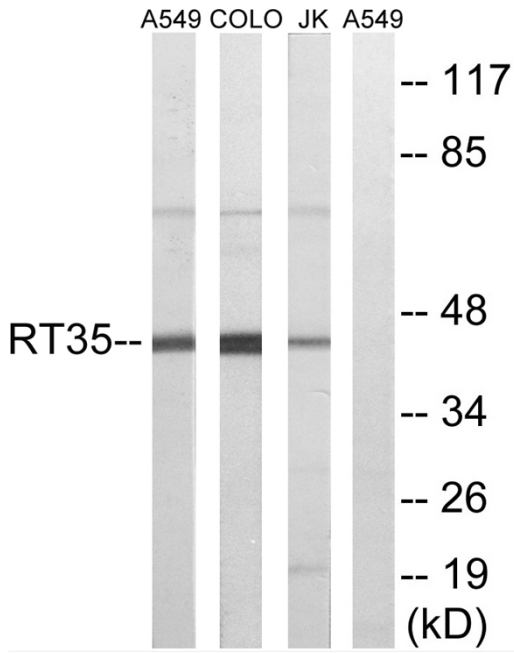


Western Blot analysis of various cells using MRP-S35 Polyclonal Antibody

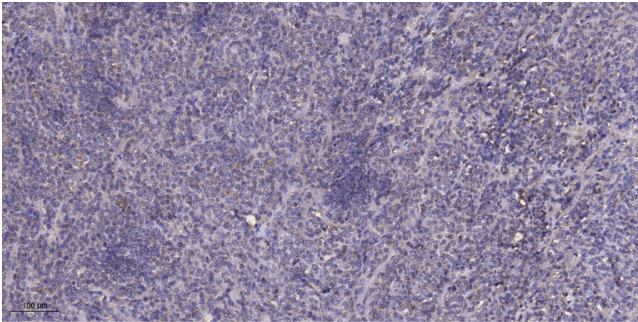


Western Blot analysis of K562 cells using MRP-S35 Polyclonal Antibody

Nanjing BYabscience technology Co.,Ltd



Western blot analysis of lysates from Jurkat, COLO, and A549 cells, using MRPS35 Antibody. The lane on the right is blocked with the synthesized peptide.



Immunohistochemical analysis of paraffin-embedded human Colon cancer. 1, Antibody was diluted at 1:200(4° overnight). 2, Tris-EDTA,pH9.0 was used for antigen retrieval. 3,Secondary antibody was diluted at 1:200(room temperature, 45min).