



MRP-S34 Polyclonal Antibody

Catalog No	BYab-04018
Isotype	IgG
Reactivity	Human;Mouse
Applications	WB;ELISA;IHC
Gene Name	MRPS34
Protein Name	28S ribosomal protein S34 mitochondrial
Immunogen	The antiserum was produced against synthesized peptide derived from human MRPS34. AA range:169-218
Specificity	MRP-S34 Polyclonal Antibody detects endogenous levels of MRP-S34 protein.
Formulation	Liquid in PBS containing 50% glycerol, 0.5% BSA and 0.02% sodium azide.
Source	Polyclonal, Rabbit,IgG
Purification	The antibody was affinity-purified from rabbit antiserum by affinity-chromatography using epitope-specific immunogen.
Dilution	WB 1:500-2000;IHC-p 1:50-300; ELISA 2000-20000
Concentration	1 mg/ml
Purity	≥90%
Storage Stability	-20°C/1 year
Synonyms	MRPS34; 28S ribosomal protein S34; mitochondrial; MRP-S34; S34mt
Observed Band	26kD
Cell Pathway	Mitochondrion .
Tissue Specificity	Eye,
Function	subunit:Component of the mitochondrial ribosome small subunit (28S) which comprises a 12S rRNA and about 30 distinct proteins.,
Background	Mammalian mitochondrial ribosomal proteins are encoded by nuclear genes and help in protein synthesis within the mitochondrion. Mitochondrial ribosomes (mitoribosomes) consist of a small 28S subunit and a large 39S subunit. They have an estimated 75% protein to rRNA composition compared to prokaryotic ribosomes, where this ratio is reversed. Another difference between mammalian mitoribosomes and prokaryotic ribosomes is that the latter contain a 5S rRNA. Among different species, the proteins comprising the mitoribosome differ greatly in sequence, and sometimes in biochemical properties, which prevents easy

Nanjing BYabscience technology Co.,Ltd



recognition by sequence homology. This gene encodes a 28S subunit protein. Alternative splicing results in multiple transcript variants. [provided by RefSeq, Jul 2014],

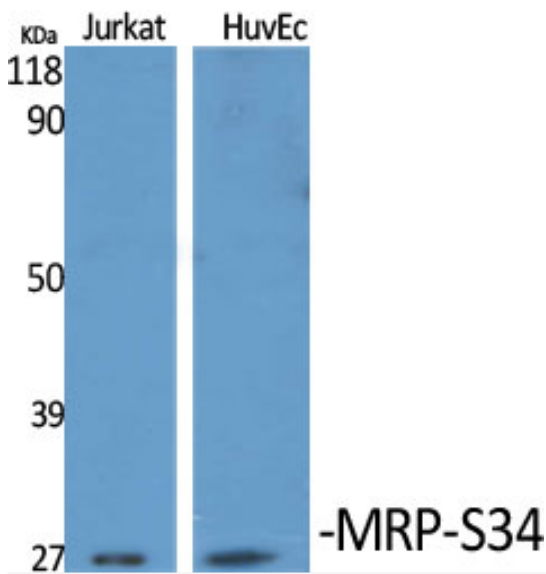
matters needing attention

Avoid repeated freezing and thawing!

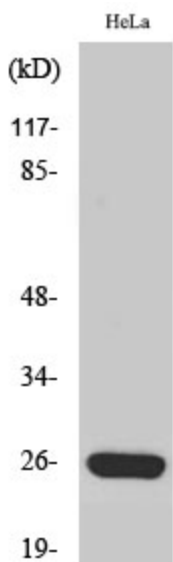
Usage suggestions

This product can be used in immunological reaction related experiments. For more information, please consult technical personnel.

Products Images

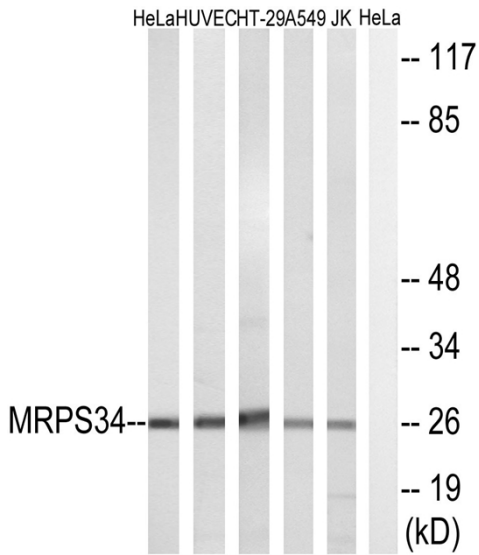


Western Blot analysis of various cells using MRP-S34 Polyclonal Antibody diluted at 1:1000

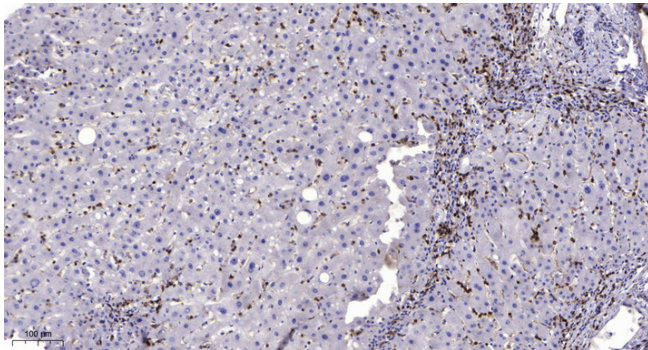


Western Blot analysis of Jurkat cells using MRP-S34 Polyclonal Antibody diluted at 1:1000

Nanjing BYabscience technology Co.,Ltd



Western blot analysis of lysates from HeLa, HUVEC, HT-29, A549, and Jurkat cells, using MRPS34 Antibody. The lane on the right is blocked with the synthesized peptide.



Immunohistochemical analysis of paraffin-embedded human liver cancer. 1, Antibody was diluted at 1:200(4° overnight). 2, Tris-EDTA, pH9.0 was used for antigen retrieval. 3, Secondary antibody was diluted at 1:200(room temperature, 45min).