



MRP-S30 Polyclonal Antibody

Catalog No	BYab-04015
Isotype	IgG
Reactivity	Human;Rat;Mouse;
Applications	WB;IHC
Gene Name	MRPS30
Protein Name	28S ribosomal protein S30 mitochondrial
Immunogen	The antiserum was produced against synthesized peptide derived from human MRPS30. AA range:390-439
Specificity	MRP-S30 Polyclonal Antibody detects endogenous levels of MRP-S30 protein.
Formulation	Liquid in PBS containing 50% glycerol, 0.5% BSA and 0.02% sodium azide.
Source	Polyclonal, Rabbit,IgG
Purification	The antibody was affinity-purified from rabbit antiserum by affinity-chromatography using epitope-specific immunogen.
Dilution	WB 1:500-2000;IHC-p 1:50-300
Concentration	1 mg/ml
Purity	≥90%
Storage Stability	-20°C/1 year
Synonyms	MRPS30; PDCD9; BM-047; 28S ribosomal protein S30; mitochondrial; MRP-S30; S30mt; Programmed cell death protein 9
Observed Band	55kD
Cell Pathway	Mitochondrion .
Tissue Specificity	Heart, skeletal muscle, kidney and liver. Lower expression in placenta and peripheral blood leukocytes.
Function	sequence caution:Sequencing errors.,similarity:Belongs to the ribosomal protein S30/L37 family.,subunit:Component of the mitochondrial ribosome small subunit (28S) which comprises a 12S rRNA and about 30 distinct proteins.,tissue specificity:Heart, skeletal muscle, kidney and liver. Lower expression in placenta and peripheral blood leukocytes.,
Background	Mammalian mitochondrial ribosomal proteins are encoded by nuclear genes and help in protein synthesis within the mitochondrion. Mitochondrial ribosomes (mitoribosomes) consist of a small 28S subunit and a large 39S subunit. They have an estimated 75% protein to rRNA composition compared to prokaryotic

Nanjing BYabscience technology Co.,Ltd



ribosomes, where this ratio is reversed. Another difference between mammalian mitoribosomes and prokaryotic ribosomes is that the latter contain a 5S rRNA. Among different species, the proteins comprising the mitoribosome differ greatly in sequence, and sometimes in biochemical properties, which prevents easy recognition by sequence homology. This gene encodes a 28S subunit protein that is similar to the chicken pro-apoptotic protein p52. Transcript variants using alternative promoters or polyA sites have been mentioned in the literature but the complete description of these sequences i

matters needing attention

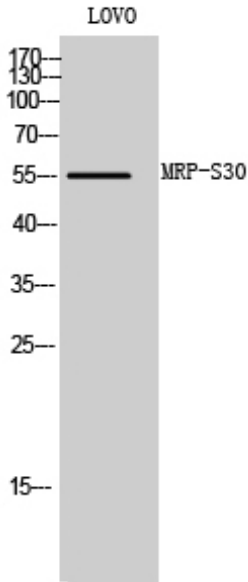
Avoid repeated freezing and thawing!

Usage suggestions

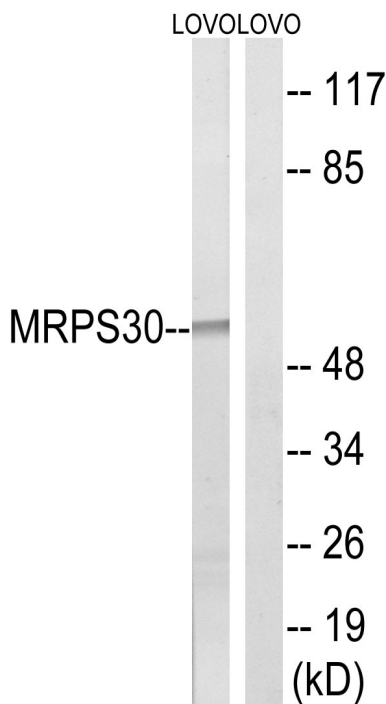
This product can be used in immunological reaction related experiments. For more information, please consult technical personnel.



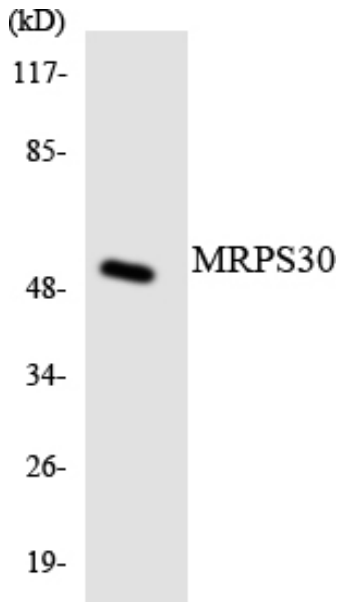
Products Images



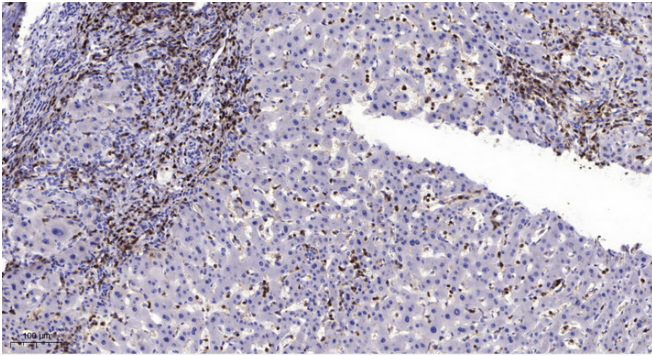
Western Blot analysis of LOVO cells using MRP-S30 Polyclonal Antibody



Western blot analysis of lysates from LOVO cells, using MRPS30 Antibody. The lane on the right is blocked with the synthesized peptide.



Western blot analysis of the lysates from Jurkat cells using MRPS30 antibody.



Immunohistochemical analysis of paraffin-embedded human liver cancer. 1, Antibody was diluted at 1:200(4° overnight). 2, Tris-EDTA,pH9.0 was used for antigen retrieval. 3,Secondary antibody was diluted at 1:200(room temperature, 45min).