



MRP-S25 Polyclonal Antibody

| | |
|---------------------------|---|
| Catalog No | BYab-04013 |
| Isotype | IgG |
| Reactivity | Human;Mouse;Rat |
| Applications | WB;ELISA;IHC |
| Gene Name | MRPS25 |
| Protein Name | 28S ribosomal protein S25 mitochondrial |
| Immunogen | The antiserum was produced against synthesized peptide derived from human MRPS25. AA range:124-173 |
| Specificity | MRP-S25 Polyclonal Antibody detects endogenous levels of MRP-S25 protein. |
| Formulation | Liquid in PBS containing 50% glycerol, 0.5% BSA and 0.02% sodium azide. |
| Source | Polyclonal, Rabbit,IgG |
| Purification | The antibody was affinity-purified from rabbit antiserum by affinity-chromatography using epitope-specific immunogen. |
| Dilution | WB 1:500-2000;IHC-p 1:50-300; ELISA 2000-20000 |
| Concentration | 1 mg/ml |
| Purity | ≥90% |
| Storage Stability | -20°C/1 year |
| Synonyms | MRPS25; RPMS25; 28S ribosomal protein S25; mitochondrial; MRP-S25; S25mt |
| Observed Band | 20kD |
| Cell Pathway | Mitochondrion . |
| Tissue Specificity | Lung,Spleen, |
| Function | similarity:Belongs to the ribosomal protein S25/L51 family.,subunit:Component of the mitochondrial ribosome small subunit (28S) which comprises a 12S rRNA and about 30 distinct proteins., |
| Background | Mammalian mitochondrial ribosomal proteins are encoded by nuclear genes and help in protein synthesis within the mitochondrion. Mitochondrial ribosomes (mitoribosomes) consist of a small 28S subunit and a large 39S subunit. They have an estimated 75% protein to rRNA composition compared to prokaryotic ribosomes, where this ratio is reversed. Another difference between mammalian mitoribosomes and prokaryotic ribosomes is that the latter contain a 5S rRNA. Among different species, the proteins comprising the mitoribosome differ greatly |

Nanjing BYabscience technology Co.,Ltd



in sequence, and sometimes in biochemical properties, which prevents easy recognition by sequence homology. This gene encodes a 28S subunit protein. A pseudogene corresponding to this gene is found on chromosome 4. Alternative splicing results in multiple transcript variants. [provided by RefSeq, Feb 2016],

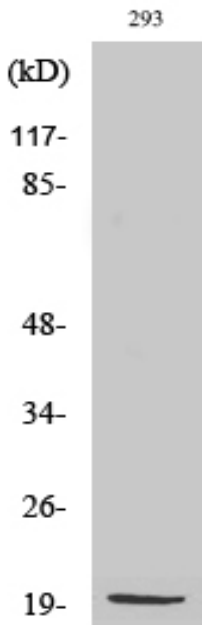
matters needing attention

Avoid repeated freezing and thawing!

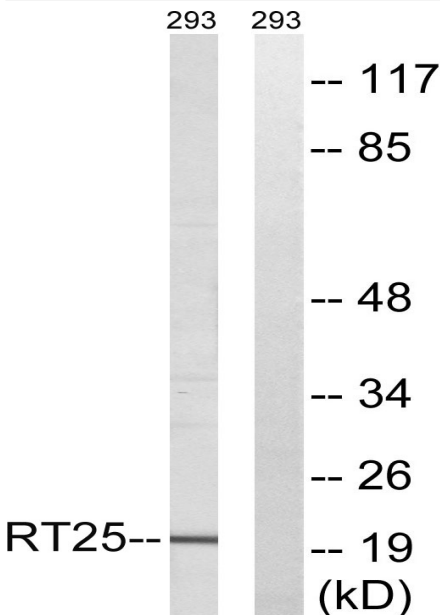
Usage suggestions

This product can be used in immunological reaction related experiments. For more information, please consult technical personnel.

Products Images

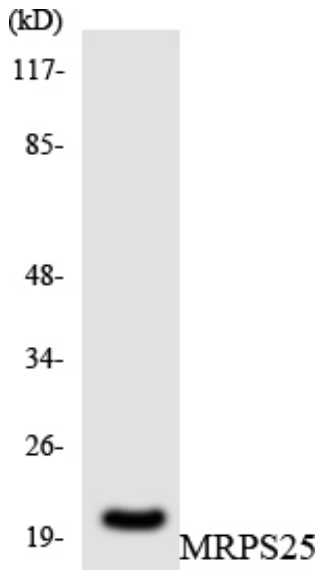


Western Blot analysis of various cells using MRP-S25 Polyclonal Antibody diluted at 1:2000

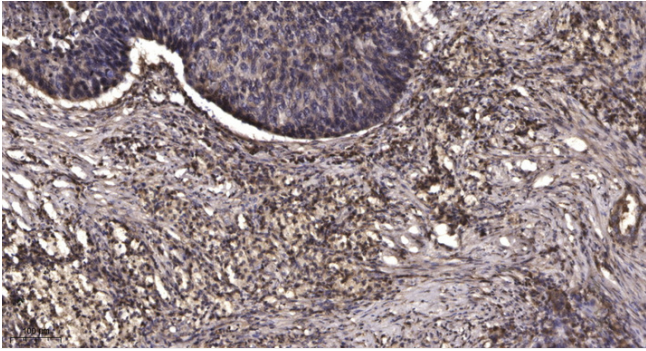


Western blot analysis of lysates from 293 cells, using MRPS25 Antibody. The lane on the right is blocked with the synthesized peptide.

Nanjing BYabscience technology Co.,Ltd



Western blot analysis of the lysates from HepG2 cells using MRPS25 antibody.



Immunohistochemical analysis of paraffin-embedded human Squamous cell carcinoma of lung. 1, Antibody was diluted at 1:200(4° overnight). 2, Tris-EDTA,pH9.0 was used for antigen retrieval. 3,Secondary antibody was diluted at 1:200(room temperature, 45min).