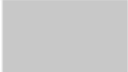




MRP-S22 Polyclonal Antibody

Catalog No	BYab-04011
Isotype	IgG
Reactivity	Human;Monkey;Bovine;Hamster;Cow
Applications	WB;IHC;IF;ELISA
Gene Name	MRPS22
Protein Name	28S ribosomal protein S22 mitochondrial
Immunogen	The antiserum was produced against synthesized peptide derived from human MRPS22. AA range:231-280
Specificity	MRP-S22 Polyclonal Antibody detects endogenous levels of MRP-S22 protein.
Formulation	Liquid in PBS containing 50% glycerol, 0.5% BSA and 0.02% sodium azide.
Source	Polyclonal, Rabbit,IgG
Purification	The : 19-  bit antiserum by affini epito pe-specific immunogen.
Dilution	Western Blot: 1/500 - 1/2000. Immunohistochemistry: 1/100 - 1/300. Immunofluorescence: 1/200 - 1/1000. ELISA: 1/40000. Not yet tested in other applications.
Concentration	1 mg/ml
Purity	≥90%
Storage Stability	-20°C/1 year
Synonyms	MRPS22; C3orf5; RPMS22; GK002; 28S ribosomal protein S22; mitochondrial; MRP-S22; S22mt
Observed Band	41kD
Cell Pathway	Mitochondrion .
Tissue Specificity	Brain,Liver cancer,Muscle,Placenta,
Function	disease:Defects in MRPS22 are the cause of combined oxidative phosphorylation deficiency type 5 (COXPD5) [MIM:611719]. COXPD5 is an antenatal mitochondrial disease. Patients show edema, cardiomyopathy, tubulopathy, and hypotonia.,subunit:Component of the mitochondrial ribosome small subunit (28S) which comprises a 12S rRNA and about 30 distinct proteins.,
Background	Mammalian mitochondrial ribosomal proteins are encoded by nuclear genes and help in protein synthesis within the mitochondrion. Mitochondrial ribosomes

Nanjing BYabscience technology Co.,Ltd



(mitoribosomes) consist of a small 28S subunit and a large 39S subunit. They have an estimated 75% protein to rRNA composition compared to prokaryotic ribosomes, where this ratio is reversed. Another difference between mammalian mitoribosomes and prokaryotic ribosomes is that the latter contain a 5S rRNA. Among different species, the proteins comprising the mitoribosome differ greatly in sequence, and sometimes in biochemical properties, which prevents easy recognition by sequence homology. This gene encodes a 28S subunit protein that does not seem to have a counterpart in prokaryotic and fungal-mitochondrial ribosomes. This gene lies telomeric of and is transcribed in the opposite direction from the forkhead box L2 gene. A pseudogene

matters needing attention

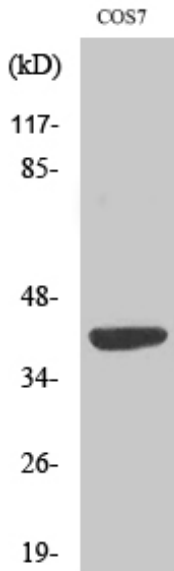
Avoid repeated freezing and thawing!

Usage suggestions

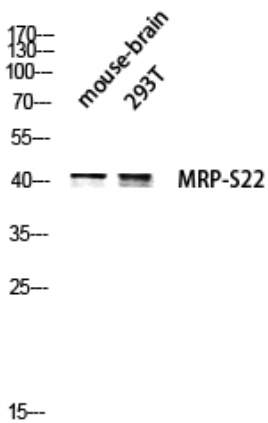
This product can be used in immunological reaction related experiments. For more information, please consult technical personnel.



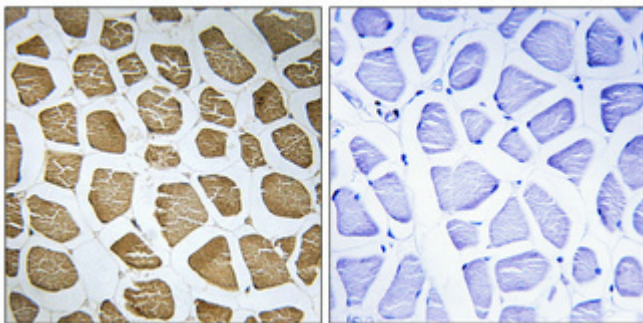
Products Images



Western Blot analysis of various cells using MRP-S22 Polyclonal Antibody

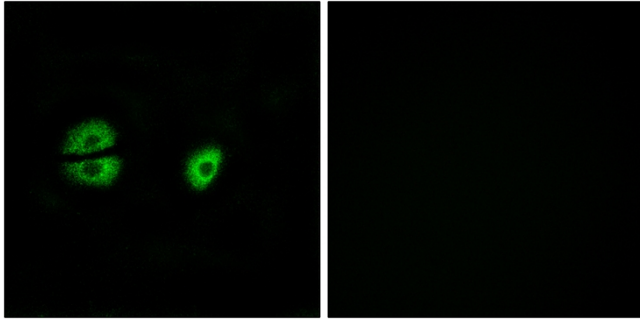


Western blot analysis of mouse-brain 293T lysis using MRP-S22 antibody.

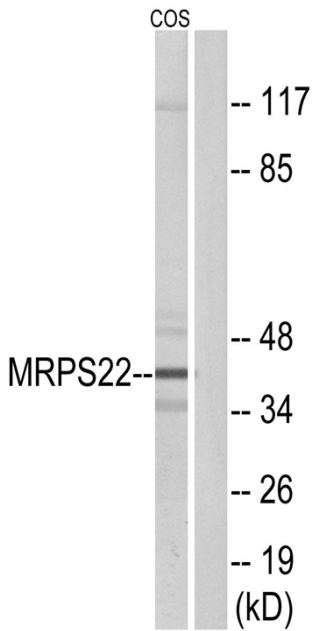


Immunohistochemical analysis of paraffin-embedded Human skeletal muscle. Antibody was diluted at 1:100(4° overnight). High-pressure and temperature Tris-EDTA,pH8.0 was used for antigen retrieval. Negative contrl (right) obtained from antibody was pre-absorbed by immunogen peptide.

Nanjing BYabscience technology Co.,Ltd



Immunofluorescence analysis of A549 cells, using MRPS22 Antibody. The picture on the right is blocked with the synthesized peptide.



Western blot analysis of lysates from COS cells, using MRPS22 Antibody. The lane on the right is blocked with the synthesized peptide.