



MRP-S2 Polyclonal Antibody

Catalog No	BYab-04009
Isotype	IgG
Reactivity	Human;Rat;Mouse;
Applications	WB;IHC;IF;ELISA
Gene Name	MRPS2
Protein Name	28S ribosomal protein S2 mitochondrial
Immunogen	The antiserum was produced against synthesized peptide derived from human MRPS2. AA range:236-285
Specificity	MRP-S2 Polyclonal Antibody detects endogenous levels of MRP-S2 protein.
Formulation	Liquid in PBS containing 50% glycerol, 0.5% BSA and 0.02% sodium azide.
Source	Polyclonal, Rabbit,IgG
Purification	The antibody was affinity-purified from rabbit antiserum by affinity-chromatography using epitope-specific immunogen.
Dilution	WB: 1/500 - 1/2000. IHC: 1/100 - 1/300. ELISA: 1/5000.. IF 1:50-200
Concentration	1 mg/ml
Purity	≥90%
Storage Stability	-20°C/1 year
Synonyms	MRPS2; CGI-91; 28S ribosomal protein S2; mitochondrial; MRP-S2; S2mt
Observed Band	33kD
Cell Pathway	Mitochondrion .
Tissue Specificity	Brain,Lung,Skin,
Function	sequence caution:Wrong choice of frame.,similarity:Belongs to the ribosomal protein S2P family.,subunit:Component of the mitochondrial ribosome small subunit (28S) which comprises a 12S rRNA and about 30 distinct proteins.,
Background	Mammalian mitochondrial ribosomal proteins are encoded by nuclear genes and help in protein synthesis within the mitochondrion. Mitochondrial ribosomes (mitoribosomes) consist of a small 28S subunit and a large 39S subunit. They have an estimated 75% protein to rRNA composition compared to prokaryotic ribosomes, where this ratio is reversed. Another difference between mammalian mitoribosomes and prokaryotic ribosomes is that the latter contain a 5S rRNA. Among different species, the proteins comprising the mitoribosome differ greatly

Nanjing BYabscience technology Co.,Ltd



in sequence, and sometimes in biochemical properties, which prevents easy recognition by sequence homology. This gene encodes a 28S subunit protein that belongs to the ribosomal protein S2 family. Alternatively spliced transcript variants have been observed for this gene. [provided by RefSeq, May 2012],

matters needing attention

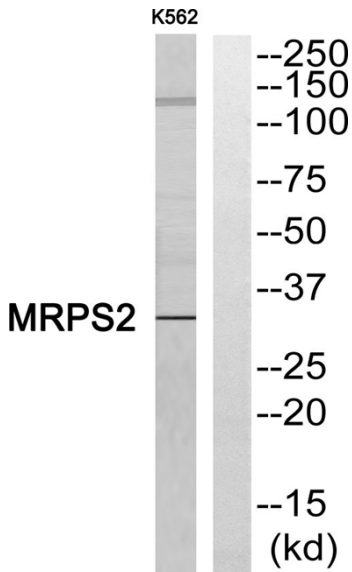
Avoid repeated freezing and thawing!

Usage suggestions

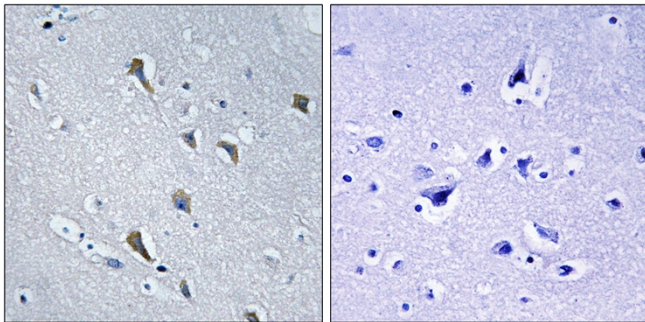
This product can be used in immunological reaction related experiments. For more information, please consult technical personnel.



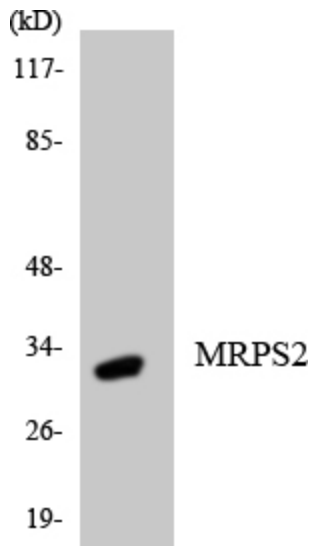
Products Images



Western blot analysis of MRPS2 Antibody. The lane on the right is blocked with the MRPS2 peptide.



Immunohistochemistry analysis of paraffin-embedded human brain, using MRPS2 Antibody. The lane on the right is blocked with the MRPS2 peptide.



Western blot analysis of the lysates from HepG2 cells using MRPS2 antibody.