



MRP-S12 Polyclonal Antibody

Catalog No	BYab-04004
Isotype	IgG
Reactivity	Human;Mouse
Applications	WB;IHC
Gene Name	MRPS12
Protein Name	28S ribosomal protein S12 mitochondrial
Immunogen	The antiserum was produced against synthesized peptide derived from human MRPS12. AA range:21-70
Specificity	MRP-S12 Polyclonal Antibody detects endogenous levels of MRP-S12 protein.
Formulation	Liquid in PBS containing 50% glycerol, 0.5% BSA and 0.02% sodium azide.
Source	Polyclonal, Rabbit,IgG
Purification	The antibody was affinity-purified from rabbit antiserum by affinity-chromatography using epitope-specific immunogen.
Dilution	WB 1:500-2000;IHC-p 1:50-300
Concentration	1 mg/ml
Purity	≥90%
Storage Stability	-20°C/1 year
Synonyms	MRPS12; RPMS12; RPSM12; 28S ribosomal protein S12; mitochondrial; MRP-S12; S12mt; MT-RPS12
Observed Band	20kD
Cell Pathway	Mitochondrion .
Tissue Specificity	Brain,Colon,Liver,Skin,
Function	similarity:Belongs to the ribosomal protein S12P family.,subunit:Component of the mitochondrial ribosome small subunit (28S) which comprises a 12S rRNA and about 30 distinct proteins.,
Background	Mammalian mitochondrial ribosomal proteins are encoded by nuclear genes and help in protein synthesis within the mitochondrion. Mitochondrial ribosomes (mitoribosomes) consist of a small 28S subunit and a large 39S subunit. They have an estimated 75% protein to rRNA composition compared to prokaryotic ribosomes, where this ratio is reversed. Another difference between mammalian mitoribosomes and prokaryotic ribosomes is that the latter contain a 5S rRNA. Among different species, the proteins comprising the mitoribosome differ greatly

Nanjing BYabscience technology Co.,Ltd



in sequence, and sometimes in biochemical properties, which prevents easy recognition by sequence homology. This gene encodes a 28S subunit protein that belongs to the ribosomal protein S12P family. The encoded protein is a key component of the ribosomal small subunit and controls the decoding fidelity and susceptibility to aminoglycoside antibiotics. Th

matters needing attention

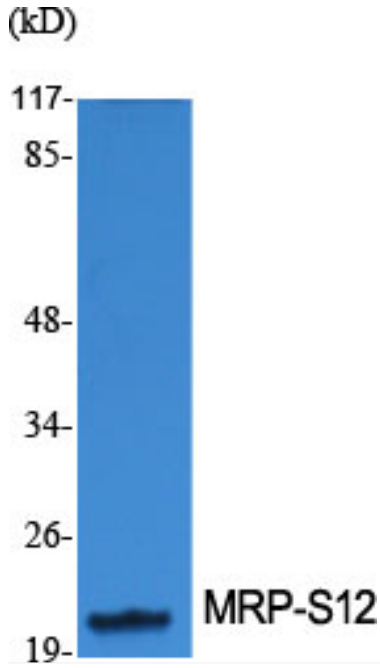
Avoid repeated freezing and thawing!

Usage suggestions

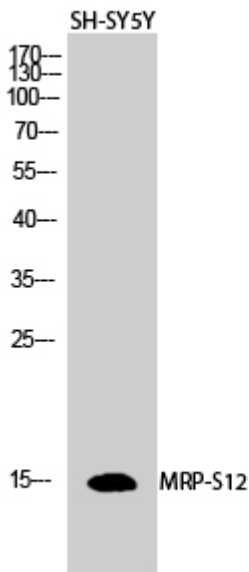
This product can be used in immunological reaction related experiments. For more information, please consult technical personnel.



Products Images



Western Blot analysis of various cells using MRP-S12 Polyclonal Antibody diluted at 1:1000



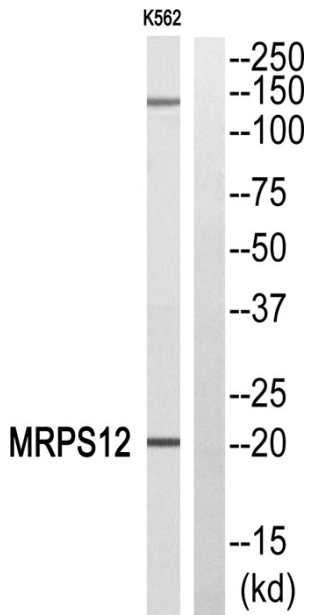
Western Blot analysis of SH-SY5Y cells using MRP-S12 Polyclonal Antibody diluted at 1:1000

Nanjing BYabscience technology Co.,Ltd

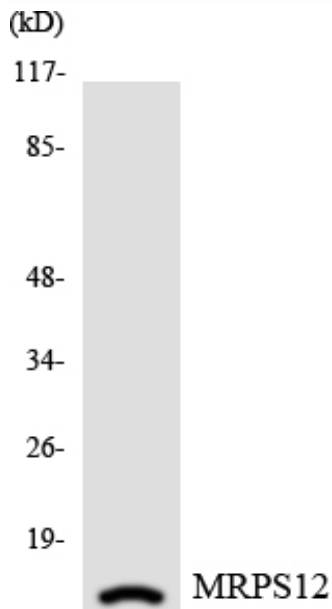
网址: www.njbybio.com

官方热线: 025-5229-8998

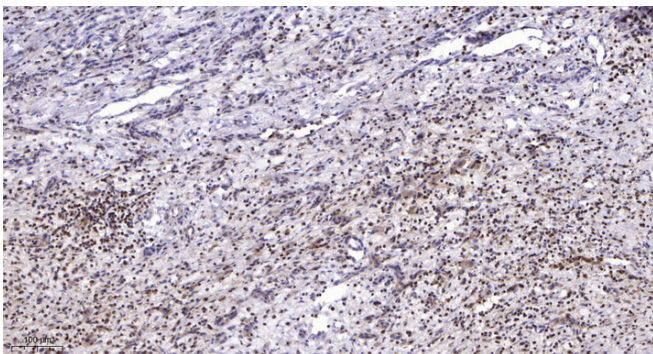
监督电话: 15950492658



Western blot analysis of MRPS12 Antibody. The lane on the right is blocked with the MRPS12 peptide.



Western blot analysis of the lysates from HepG2 cells using MRPS12 antibody.



Immunohistochemical analysis of paraffin-embedded human liver cancer. 1, Antibody was diluted at 1:200(4° overnight). 2, Tris-EDTA,pH9.0 was used for antigen retrieval. 3,Secondary antibody was diluted at 1:200(room temperature, 45min).