



# MRP-L49 Polyclonal Antibody

<b>Catalog No</b>	BYab-03998
<b>Isotype</b>	IgG
<b>Reactivity</b>	Human;Rat;Mouse;
<b>Applications</b>	WB;IHC;IF;ELISA
<b>Gene Name</b>	MRPL49
<b>Protein Name</b>	39S ribosomal protein L49 mitochondrial
<b>Immunogen</b>	Synthesized peptide derived from MRP-L49 . at AA range: 10-90
<b>Specificity</b>	MRP-L49 Polyclonal Antibody detects endogenous levels of MRP-L49 protein.
<b>Formulation</b>	Liquid in PBS containing 50% glycerol, 0.5% BSA and 0.02% sodium azide.
<b>Source</b>	Polyclonal, Rabbit,IgG
<b>Purification</b>	The antibody was affinity-purified from rabbit antiserum by affinity-chromatography using epitope-specific immunogen.
<b>Dilution</b>	WB: 1/500 - 1/2000. IHC: 1/100 - 1/300. ELISA: 1/40000.. IF 1:50-200
<b>Concentration</b>	1 mg/ml
<b>Purity</b>	≥90%
<b>Storage Stability</b>	-20°C/1 year
<b>Synonyms</b>	MRPL49; C11orf4; NOF1; OK/SW-cl.67; 39S ribosomal protein L49; mitochondrial; L49mt; MRP-L49; Neighbor of FAU; NOF; Protein NOF1
<b>Observed Band</b>	19kD
<b>Cell Pathway</b>	Mitochondrion .
<b>Tissue Specificity</b>	Ubiquitous.
<b>Function</b>	similarity:Belongs to the ribosomal protein L49em family.,tissue specificity:Ubiquitous.,
<b>Background</b>	Mammalian mitochondrial ribosomal proteins are encoded by nuclear genes and help in protein synthesis within the mitochondrion. Mitochondrial ribosomes (mitoribosomes) consist of a small 28S subunit and a large 39S subunit. They have an estimated 75% protein to rRNA composition compared to prokaryotic ribosomes, where this ratio is reversed. Another difference between mammalian mitoribosomes and prokaryotic ribosomes is that the latter contain a 5S rRNA. Among different species, the proteins comprising the mitoribosome differ greatly in sequence, and sometimes in biochemical properties, which prevents easy

Nanjing BYabscience technology Co.,Ltd



recognition by sequence homology. Pseudogenes corresponding to this gene are found on chromosomes 5q and 8p. [provided by RefSeq, May 2011],

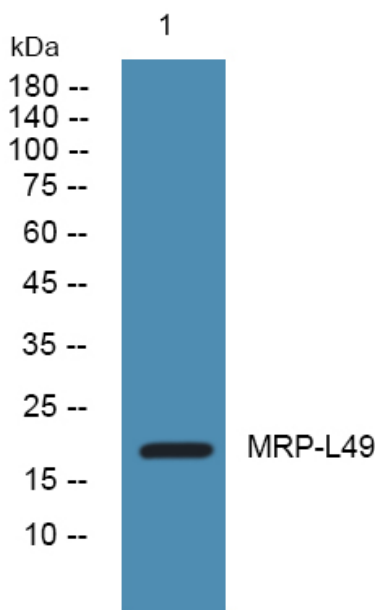
**matters needing attention**

Avoid repeated freezing and thawing!

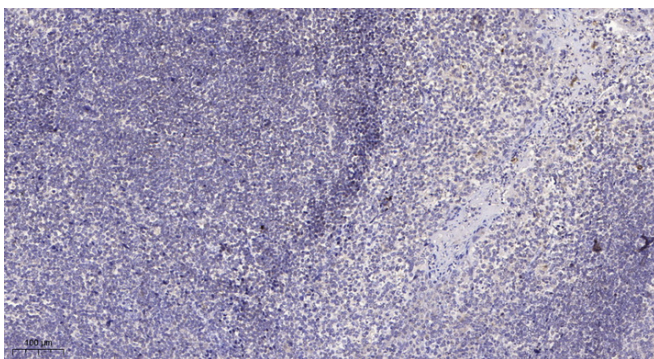
**Usage suggestions**

This product can be used in immunological reaction related experiments. For more information, please consult technical personnel.

## Products Images



Western blot analysis of lysates from U2OS cells, primary antibody was diluted at 1:1000, 4° over night



Immunohistochemical analysis of paraffin-embedded human tonsil. 1, Antibody was diluted at 1:200(4° overnight). 2, Tris-EDTA, pH9.0 was used for antigen retrieval. 3, Secondary antibody was diluted at 1:200(room temperature, 30min).

Nanjing BYabscience technology Co.,Ltd