



MRP-L40 Polyclonal Antibody

Catalog No	BYab-03992
Isotype	IgG
Reactivity	Human;Rat;Mouse;
Applications	WB;IHC;IF;ELISA
Gene Name	MRPL40
Protein Name	39S ribosomal protein L40 mitochondrial
Immunogen	The antiserum was produced against synthesized peptide derived from human MRPL40. AA range:101-150
Specificity	MRP-L40 Polyclonal Antibody detects endogenous levels of MRP-L40 protein.
Formulation	Liquid in PBS containing 50% glycerol, 0.5% BSA and 0.02% sodium azide.
Source	Polyclonal, Rabbit,IgG
Purification	The antibody was affinity-purified from rabbit antiserum by affinity-chromatography using epitope-specific immunogen.
Dilution	WB: 1/500 - 1/2000. IHC: 1/100 - 1/300. ELISA: 1/40000.. IF 1:50-200
Concentration	1 mg/ml
Purity	≥90%
Storage Stability	-20°C/1 year
Synonyms	MRPL40; NLVCF; URIM; 39S ribosomal protein L40; mitochondrial; L40mt; MRP-L40; Nuclear localization signal-containing protein deleted in velocardiofacial syndrome; Up-regulated in metastasis
Observed Band	24kD
Cell Pathway	Mitochondrion .
Tissue Specificity	Ubiquitous.
Function	tissue specificity:Ubiquitous.,
Background	Mammalian mitochondrial ribosomal proteins are encoded by nuclear genes and help in protein synthesis within the mitochondrion. Mitochondrial ribosomes (mitoribosomes) consist of a small 28S subunit and a large 39S subunit. They have an estimated 75% protein to rRNA composition compared to prokaryotic ribosomes, where this ratio is reversed. Another difference between mammalian mitoribosomes and prokaryotic ribosomes is that the latter contain a 5S rRNA.

Nanjing BYabscience technology Co.,Ltd



Among different species, the proteins comprising the mitoribosome differ greatly in sequence, and sometimes in biochemical properties, which prevents easy recognition by sequence homology. This gene encodes a 39S subunit protein. Deletions in this gene may contribute to the etiology of velo-cardio-facial syndrome and DiGeorge syndrome. [provided by RefSeq, Jul 2008],

matters needing attention

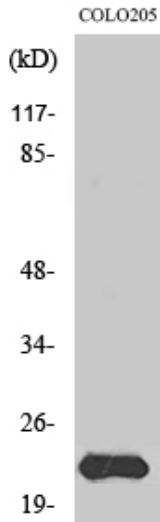
Avoid repeated freezing and thawing!

Usage suggestions

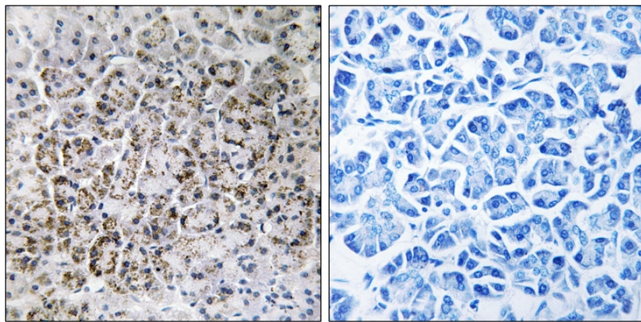
This product can be used in immunological reaction related experiments. For more information, please consult technical personnel.



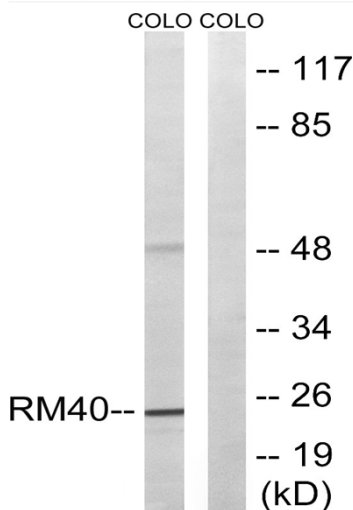
Products Images



Western Blot analysis of various cells using MRP-L40 Polyclonal Antibody diluted at 1:1000

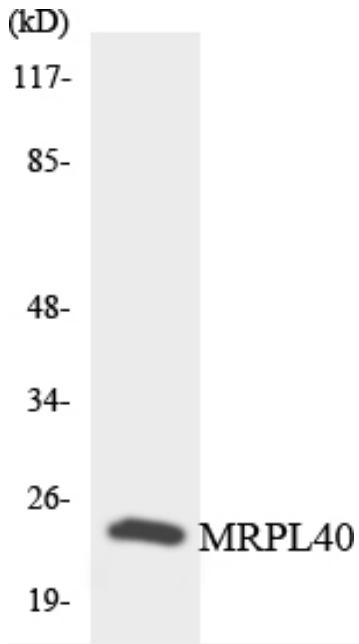


Immunohistochemistry analysis of paraffin-embedded human pancreas tissue, using MRPL40 Antibody. The picture on the right is blocked with the synthesized peptide.



Western blot analysis of lysates from COLO cells, using MRPL40 Antibody. The lane on the right is blocked with the synthesized peptide.

Nanjing BYabscience technology Co.,Ltd



Western blot analysis of the lysates from Jurkat cells using MRPL40 antibody.