



MRP-L34 Polyclonal Antibody

Catalog No	BYab-03989
Isotype	IgG
Reactivity	Human;Mouse
Applications	IHC;IF;ELISA
Gene Name	MRPL34
Protein Name	39S ribosomal protein L34 mitochondrial
Immunogen	The antiserum was produced against synthesized peptide derived from human MRPL34. AA range:21-70
Specificity	MRP-L34 Polyclonal Antibody detects endogenous levels of MRP-L34 protein.
Formulation	Liquid in PBS containing 50% glycerol, 0.5% BSA and 0.02% sodium azide.
Source	Polyclonal, Rabbit,IgG
Purification	The antibody was affinity-purified from rabbit antiserum by affinity-chromatography using epitope-specific immunogen.
Dilution	IHC: 1/100 - 1/300. ELISA: 1/10000.. IF 1:50-200
Concentration	1 mg/ml
Purity	≥90%
Storage Stability	-20°C/1 year
Synonyms	MRPL34; 39S ribosomal protein L34; mitochondrial; L34mt; MRP-L34
Observed Band	
Cell Pathway	Mitochondrion .
Tissue Specificity	Colon,Placenta,
Function	similarity:Belongs to the ribosomal protein L34P family.,
Background	Mammalian mitochondrial ribosomal proteins are encoded by nuclear genes and help in protein synthesis within the mitochondrion. Mitochondrial ribosomes (mitoribosomes) consist of a small 28S subunit and a large 39S subunit. They have an estimated 75% protein to rRNA composition compared to prokaryotic ribosomes, where this ratio is reversed. Another difference between mammalian mitoribosomes and prokaryotic ribosomes is that the latter contain a 5S rRNA. Among different species, the proteins comprising the mitoribosome differ greatly in sequence, and sometimes in biochemical properties, which prevents easy recognition by sequence homology. This gene encodes a 39S subunit protein.

Nanjing BYabscience technology Co.,Ltd



[provided by RefSeq, Jul 2008],

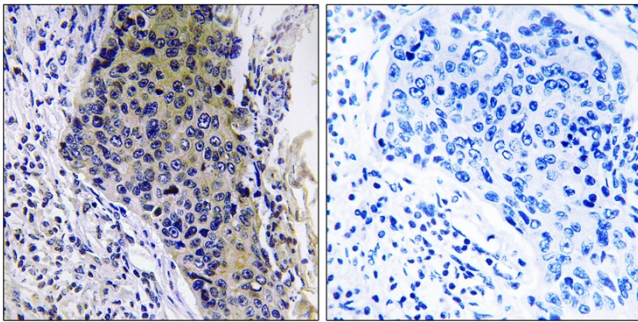
matters needing attention

Avoid repeated freezing and thawing!

Usage suggestions

This product can be used in immunological reaction related experiments. For more information, please consult technical personnel.

Products Images



Immunohistochemistry analysis of paraffin-embedded human lung carcinoma tissue, using MRPL34 Antibody. The picture on the right is blocked with the synthesized peptide.