



MRP-L18 Polyclonal Antibody

Catalog No	BYab-03981
Isotype	IgG
Reactivity	Human;Rat;Mouse;
Applications	WB;IHC;IF;ELISA
Gene Name	MRPL18
Protein Name	39S ribosomal protein L18 mitochondrial
Immunogen	The antiserum was produced against synthesized peptide derived from human MRPL18. AA range:1-50
Specificity	MRP-L18 Polyclonal Antibody detects endogenous levels of MRP-L18 protein.
Formulation	Liquid in PBS containing 50% glycerol, 0.5% BSA and 0.02% sodium azide.
Source	Polyclonal, Rabbit,IgG
Purification	The antibody was affinity-purified from rabbit antiserum by affinity-chromatography using epitope-specific immunogen.
Dilution	WB: 1/500 - 1/2000. IHC: 1/100 - 1/300. ELISA: 1/20000.. IF 1:50-200
Concentration	1 mg/ml
Purity	≥90%
Storage Stability	-20°C/1 year
Synonyms	MRPL18; HSPC071; 39S ribosomal protein L18; mitochondrial; L18mt; MRP-L18
Observed Band	21kD
Cell Pathway	Mitochondrion .
Tissue Specificity	Brain, Eye, Umbilical cord blood,
Function	similarity:Belongs to the ribosomal protein L18P family.,
Background	This nuclear gene encodes a protein component of the larger 39S subunit of mitochondrial ribosome. This protein may also aid in the import of nuclear-encoded 5S rRNA into mitochondria. Alternative splicing results in multiple transcript variants, most of which are not predicted to encode a protein. A pseudogene of this gene is found on chromosome 16. [provided by RefSeq, Jan 2016],

Nanjing BYabscience technology Co.,Ltd



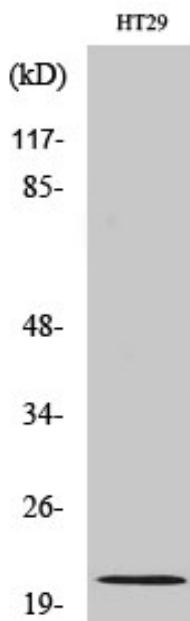
matters needing attention

Avoid repeated freezing and thawing!

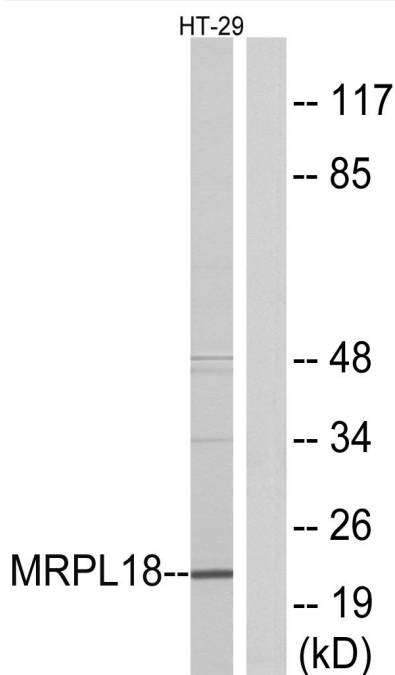
Usage suggestions

This product can be used in immunological reaction related experiments. For more information, please consult technical personnel.

Products Images

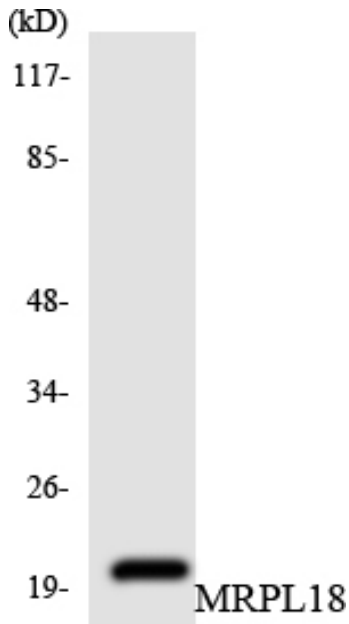


Western Blot analysis of various cells using MRP-L18 Polyclonal Antibody diluted at 1:1000

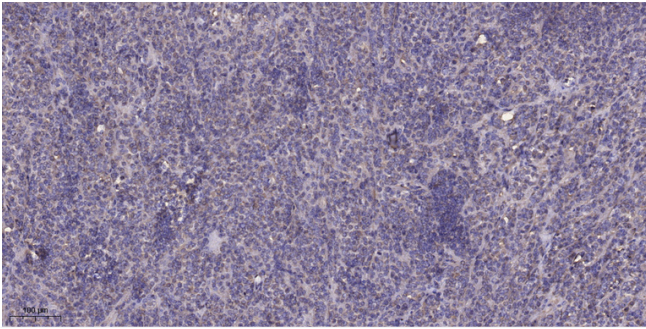


Western blot analysis of lysates from HT-29 cells, using MRPL18 Antibody. The lane on the right is blocked with the synthesized peptide.

Nanjing BYabscience technology Co.,Ltd



Western blot analysis of the lysates from HUVEC cells using MRPL18 antibody.



Immunohistochemical analysis of paraffin-embedded human Colon cancer. 1, Antibody was diluted at 1:200(4° overnight). 2, Tris-EDTA, pH9.0 was used for antigen retrieval. 3, Secondary antibody was diluted at 1:200(room temperature, 45min).