



MRP-L12 Polyclonal Antibody

Catalog No	BYab-03975
Isotype	IgG
Reactivity	Human;Mouse
Applications	WB;ELISA;IHC
Gene Name	MRPL12
Protein Name	39S ribosomal protein L12 mitochondrial
Immunogen	The antiserum was produced against synthesized peptide derived from human MRPL12. AA range:31-80
Specificity	MRP-L12 Polyclonal Antibody detects endogenous levels of MRP-L12 protein.
Formulation	Liquid in PBS containing 50% glycerol, 0.5% BSA and 0.02% sodium azide.
Source	Polyclonal, Rabbit,IgG
Purification	The antibody was affinity-purified from rabbit antiserum by affinity-chromatography using epitope-specific immunogen.
Dilution	WB 1:500-2000;IHC-p 1:50-300; ELISA 2000-20000
Concentration	1 mg/ml
Purity	≥90%
Storage Stability	-20°C/1 year
Synonyms	MRPL12; RPML12; 39S ribosomal protein L12; mitochondrial; L12mt; MRP-L12; 5c5-2
Observed Band	21kD
Cell Pathway	Mitochondrion .
Tissue Specificity	Muscle,Tonsil,
Function	similarity:Belongs to the ribosomal protein L12P family.,
Background	Mammalian mitochondrial ribosomal proteins are encoded by nuclear genes and help in protein synthesis within the mitochondrion. Mitochondrial ribosomes (mitoribosomes) consist of a small 28S subunit and a large 39S subunit. They have an estimated 75% protein to rRNA composition compared to prokaryotic ribosomes, where this ratio is reversed. Another difference between mammalian mitoribosomes and prokaryotic ribosomes is that the latter contain a 5S rRNA. Among different species, the proteins comprising the mitoribosome differ greatly in sequence, and sometimes in biochemical properties, which prevents easy

Nanjing BYabscience technology Co.,Ltd



recognition by sequence homology. This gene encodes a 39S subunit protein which forms homodimers. In prokaryotic ribosomes, two L7/L12 dimers and one L10 protein form the L8 protein complex. [provided by RefSeq, Jul 2008],

matters needing attention

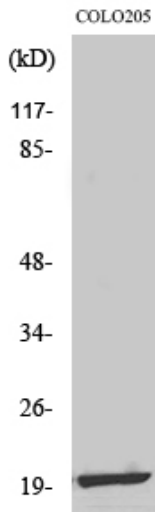
Avoid repeated freezing and thawing!

Usage suggestions

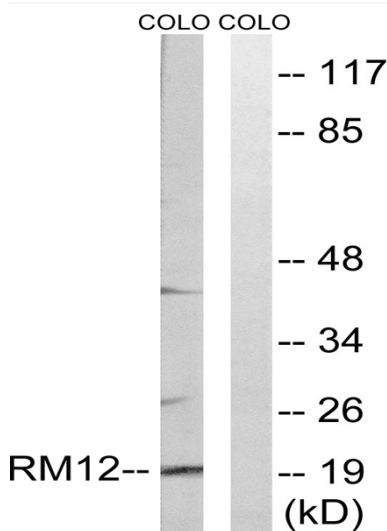
This product can be used in immunological reaction related experiments. For more information, please consult technical personnel.



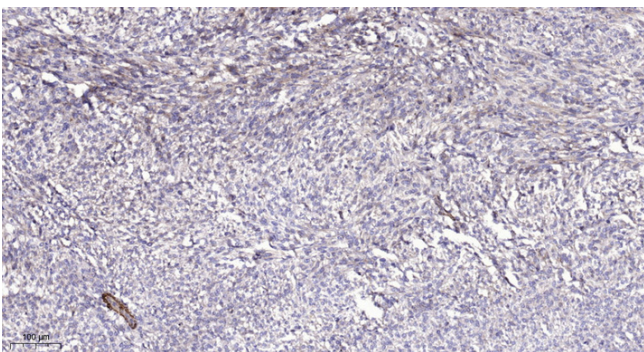
Products Images



Western Blot analysis of various cells using MRP-L12 Polyclonal Antibody



Western blot analysis of lysates from COLO cells, using MRPL12 Antibody. The lane on the right is blocked with the synthesized peptide.



Immunohistochemical analysis of paraffin-embedded human Colon cancer. 1, Antibody was diluted at 1:200(4° overnight). 2, Tris-EDTA,pH9.0 was used for antigen retrieval. 3,Secondary antibody was diluted at 1:200(room temperature, 45min).

Nanjing BYabscience technology Co.,Ltd