



MRP7 Polyclonal Antibody

Catalog No	BYab-03972
Isotype	IgG
Reactivity	Human;Monkey
Applications	WB;IHC
Gene Name	ABCC10
Protein Name	Multidrug resistance-associated protein 7
Immunogen	The antiserum was produced against synthesized peptide derived from human MRP7. AA range:835-884
Specificity	MRP7 Polyclonal Antibody detects endogenous levels of MRP7 protein.
Formulation	Liquid in PBS containing 50% glycerol, 0.5% BSA and 0.02% sodium azide.
Source	Polyclonal, Rabbit,IgG
Purification	The antibody was affinity-purified from rabbit antiserum by affinity-chromatography using epitope-specific immunogen.
Dilution	WB 1:500-2000;IHC-p 1:50-300
Concentration	1 mg/ml
Purity	≥90%
Storage Stability	-20°C/1 year
Synonyms	ABCC10; MRP7; SIMRP7; Multidrug resistance-associated protein 7; ATP-binding cassette sub-family C member 10
Observed Band	162kD
Cell Pathway	Cell membrane ; Multi-pass membrane protein . Basolateral cell membrane ; Multi-pass membrane protein .
Tissue Specificity	[Isoform 1]: Specifically expressed in spleen. ; [Isoform 2]: Widely expressed.
Function	function:ATP-dependent transporter probably involved in cellular detoxification through lipophilic anion extrusion.,similarity:Belongs to the ABC transporter family.,similarity:Belongs to the ABC transporter family. Conjugate transporter (TC 3.A.1.208) subfamily.,similarity:Contains 2 ABC transmembrane type-1 domains.,similarity:Contains 2 ABC transporter domains.,tissue specificity:Isoform 1 is specifically expressed in spleen. Isoform 2 is more widely expressed.,
Background	The protein encoded by this gene is a member of the superfamily of ATP-binding cassette (ABC) transporters. ABC proteins transport various molecules across

Nanjing BYabscience technology Co.,Ltd



extra- and intra-cellular membranes. ABC genes are divided into seven distinct subfamilies (ABC1, MDR/TAP, MRP, ALD, OABP, GCN20, and White). This ABC full-transporter is a member of the MRP subfamily which is involved in multi-drug resistance. Multiple transcript variants encoding different isoforms have been found for this gene.[provided by RefSeq, Nov 2010],

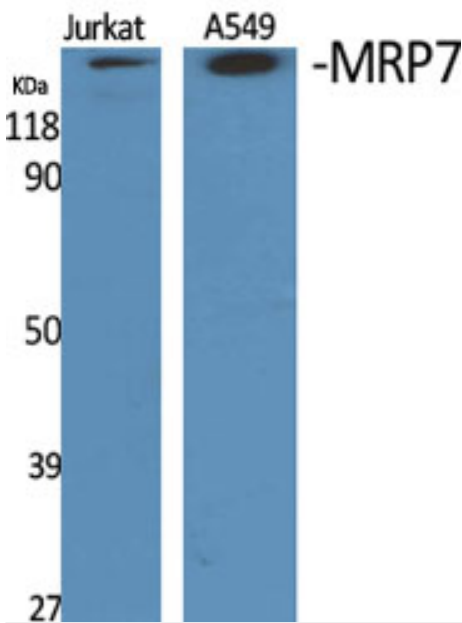
matters needing attention

Avoid repeated freezing and thawing!

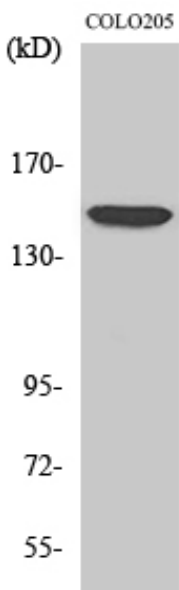
Usage suggestions

This product can be used in immunological reaction related experiments. For more information, please consult technical personnel.

Products Images

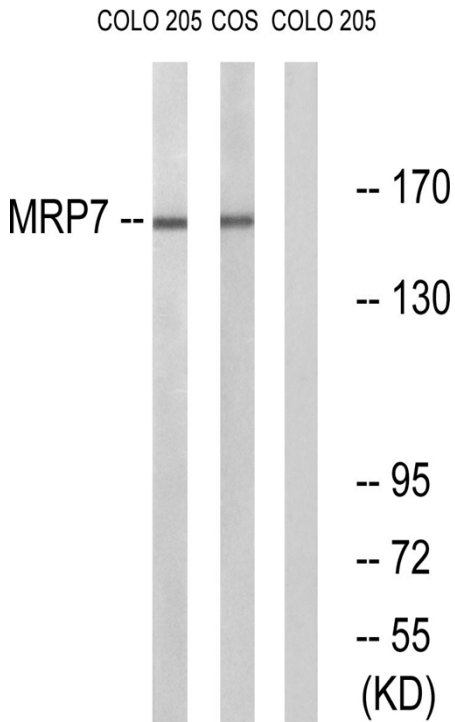


Western Blot analysis of various cells using MRP7 Polyclonal Antibody diluted at 1:1000

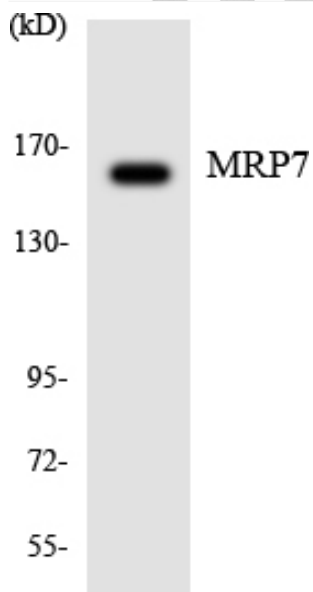


Western Blot analysis of COS7 cells using MRP7 Polyclonal Antibody diluted at 1:1000

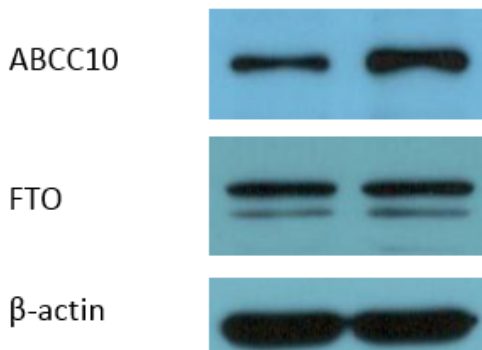
Nanjing BYabscience technology Co.,Ltd



Western blot analysis of lysates from COLO and COS7 cells, using MRP7 Antibody. The lane on the right is blocked with the synthesized peptide.



Western blot analysis of the lysates from HepG2 cells using MRP7 antibody.



The picture was kindly provided by our customer. Primary antibody was diluted at 1:1000. Loading control antibody was diluted at 1:5000