



LRRC41 Polyclonal Antibody

Catalog No	BYab-03948
Isotype	IgG
Reactivity	Human;Mouse;Rat
Applications	WB;IHC;IF;ELISA
Gene Name	LRRC41
Protein Name	Leucine-rich repeat-containing protein 41
Immunogen	The antiserum was produced against synthesized peptide derived from human LRRC41. AA range:391-440
Specificity	LRRC41 Polyclonal Antibody detects endogenous levels of LRRC41 protein.
Formulation	Liquid in PBS containing 50% glycerol, 0.5% BSA and 0.02% sodium azide.
Source	Polyclonal, Rabbit,IgG
Purification	The antibody was affinity-purified from rabbit antiserum by affinity-chromatography using epitope-specific immunogen.
Dilution	WB: 1/500 - 1/2000. IHC: 1/100 - 1/300. ELISA: 1/5000.. IF 1:50-200
Concentration	1 mg/ml
Purity	≥90%
Storage Stability	-20°C/1 year
Synonyms	LRRC41; MUF1; PP7759; Leucine-rich repeat-containing protein 41; Protein Muf1
Observed Band	80kD
Cell Pathway	nucleus,cytoplasm,membrane,
Tissue Specificity	Brain,Endometrium,Epithelium,Pancreas,Testis,Tonsil,
Function	caution:It is uncertain whether Met-1 or Met-23 is the initiator.,domain:The elongin BC complex binding domain is also known as BC-box with the consensus [APST]-L-x(3)-C-x(3)-[ALLV].,function:Probable substrate recognition component of an ECS (Elongin BC-CUL2/5-SOCS-box protein) E3 ubiquitin ligase complex which mediates the ubiquitination and subsequent proteasomal degradation of target proteins.,pathway:Protein modification; protein ubiquitination.,PTM:Phosphorylated upon DNA damage, probably by ATM or ATR.,sequence caution:Translation N-terminally extended.,similarity:Contains 7 LRR (leucine-rich) repeats.,subunit:Part of an E3 ubiquitin-protein ligase complex with Elongin BC (TCEB1 and TCEB2), RBX1 and CUL5. Component of a probable ECS(LRRC41) complex which contains CUL5, RNF7/RBX2, Elongin BC

Nanjing BYabscience technology Co.,Ltd



and LRRC41. Interacts with CUL5, RNF7, TCEB1 and TCEB2.,

Background

caution:It is uncertain whether Met-1 or Met-23 is the initiator.,domain:The elongin BC complex binding domain is also known as BC-box with the consensus [APST]-L-x(3)-C-x(3)-[AILV].,function:Probable substrate recognition component of an ECS (Elongin BC-CUL2/5-SOCS-box protein) E3 ubiquitin ligase complex which mediates the ubiquitination and subsequent proteasomal degradation of target proteins.,pathway:Protein modification; protein ubiquitination.,PTM:Phosphorylated upon DNA damage, probably by ATM or ATR.,sequence caution:Translation N-terminally extended.,similarity:Contains 7 LRR (leucine-rich) repeats.,subunit:Part of an E3 ubiquitin-protein ligase complex with Elongin BC (TCEB1 and TCEB2), RBX1 and CUL5. Component of a probable ECS(LRRC41) complex which contains CUL5, RNF7/RBX2, Elongin BC and LRRC41. Interacts with CUL5, RNF7, TCEB1 and TCEB2.,

matters needing attention

Avoid repeated freezing and thawing!

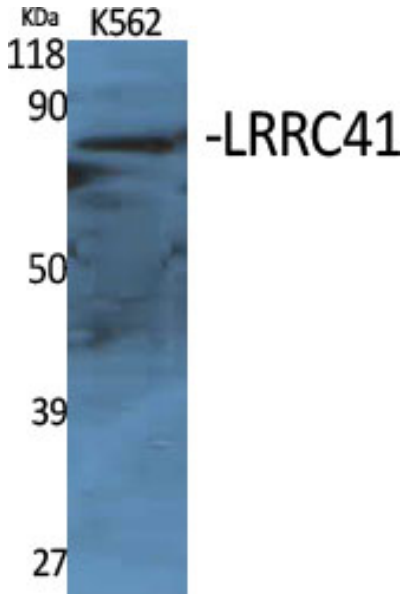
Usage suggestions

This product can be used in immunological reaction related experiments. For more information, please consult technical personnel.

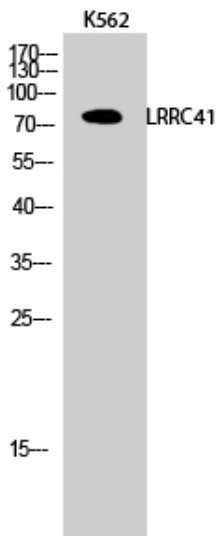
Nanjing BYabscience technology Co.,Ltd



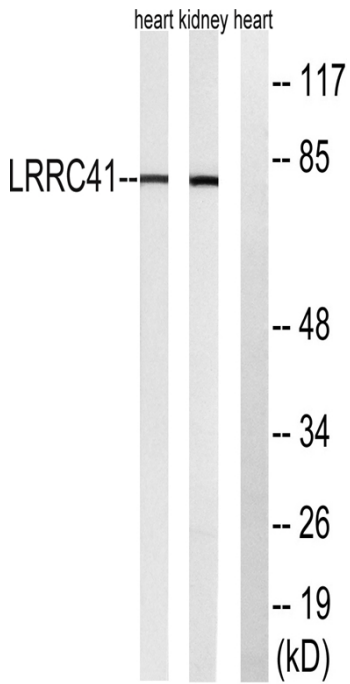
Products Images



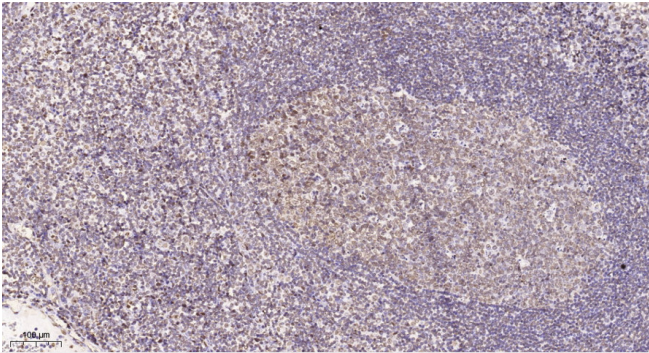
Western Blot analysis of various cells using LRRC41 Polyclonal Antibody



Western Blot analysis of K562 cells using LRRC41 Polyclonal Antibody



Western blot analysis of lysates from rat kidney and rat heart cells, using LRRC41 Antibody. The lane on the right is blocked with the synthesized peptide.



Immunohistochemical analysis of paraffin-embedded human tonsil. 1, Tris-EDTA, pH9.0 was used for antigen retrieval. 2 Antibody was diluted at 1:200(4° overnight). 3, Secondary antibody was diluted at 1:200(room temperature, 45min).