



LRG1 Polyclonal Antibody

Catalog No	BYab-03947
Isotype	IgG
Reactivity	Human;Rat;Mouse;
Applications	WB;ELISA;IHC
Gene Name	LRG1
Protein Name	Leucine-rich alpha-2-glycoprotein
Immunogen	Synthesized peptide derived from the C-terminal region of human LRG1.
Specificity	LRG1 Polyclonal Antibody detects endogenous levels of LRG1 protein.
Formulation	Liquid in PBS containing 50% glycerol, 0.5% BSA and 0.02% sodium azide.
Source	Polyclonal, Rabbit,IgG
Purification	The antibody was affinity-purified from rabbit antiserum by affinity-chromatography using epitope-specific immunogen.
Dilution	WB 1:500-2000;IHC-p 1:50-300; ELISA 2000-20000
Concentration	1 mg/ml
Purity	≥90%
Storage Stability	-20°C/1 year
Synonyms	LRG1; LRG; Leucine-rich alpha-2-glycoprotein; LRG
Observed Band	58kD
Cell Pathway	Secreted.
Tissue Specificity	Plasma.
Function	similarity:Contains 8 LRR (leucine-rich) repeats.,tissue specificity:Plasma.,
Background	The leucine-rich repeat (LRR) family of proteins, including LRG1, have been shown to be involved in protein-protein interaction, signal transduction, and cell adhesion and development. LRG1 is expressed during granulocyte differentiation (O'Connell et al., 2002 [PubMed 12223515]).[supplied by OMIM, Mar 2008],
matters needing attention	Avoid repeated freezing and thawing!

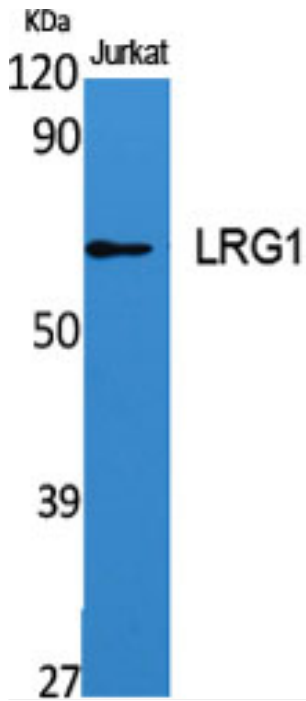
Nanjing BYabscience technology Co.,Ltd



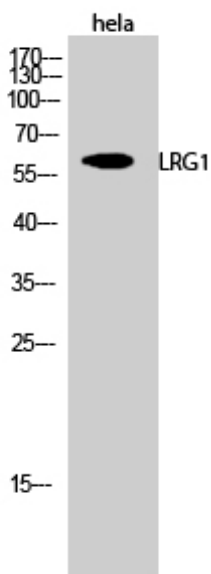
Usage suggestions

This product can be used in immunological reaction related experiments. For more information, please consult technical personnel.

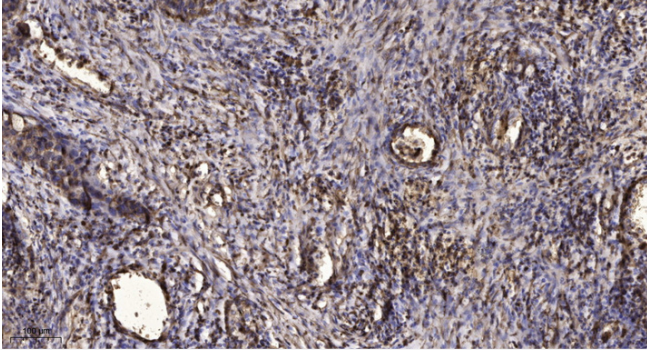
Products Images



Western Blot analysis of various cells using LRG1 Polyclonal Antibody



Western Blot analysis of HeLa cells using LRG1 Polyclonal Antibody



Immunohistochemical analysis of paraffin-embedded human Squamous cell carcinoma of lung. 1, Antibody was diluted at 1:200(4° overnight). 2, Tris-EDTA,pH9.0 was used for antigen retrieval. 3,Secondary antibody was diluted at 1:200(room temperature, 45min).