



KLHL29 Polyclonal Antibody

Catalog No	BYab-03943
Isotype	IgG
Reactivity	Human;Mouse
Applications	IHC;IF;ELISA
Gene Name	KLHL29
Protein Name	Kelch-like protein 29
Immunogen	The antiserum was produced against synthesized peptide derived from human KLHL29. AA range:261-310
Specificity	KLHL29 Polyclonal Antibody detects endogenous levels of KLHL29 protein.
Formulation	Liquid in PBS containing 50% glycerol, 0.5% BSA and 0.02% sodium azide.
Source	Polyclonal, Rabbit,IgG
Purification	The antibody was affinity-purified from rabbit antiserum by affinity-chromatography using epitope-specific immunogen.
Dilution	IHC: 1/100 - 1/300. ELISA: 1/40000.. IF 1:50-200
Concentration	1 mg/ml
Purity	≥90%
Storage Stability	-20°C/1 year
Synonyms	KLHL29; KBTBD9; KIAA1921; Kelch-like protein 29; Kelch repeat and BTB domain-containing protein 9
Observed Band	
Cell Pathway	Cul3-RING ubiquitin ligase complex,
Tissue Specificity	Brain,Melanoma,Placenta,Spleen,
Function	caution:Although the complete sequence is not known with certainty, sequence shown here appears to be the most probable in accordance with the mouse sequence ortholog.,similarity:Contains 1 BTB (POZ) domain.,similarity:Contains 6 Kelch repeats.,
Background	caution:Although the complete sequence is not known with certainty, sequence shown here appears to be the most probable in accordance with the mouse sequence ortholog.,similarity:Contains 1 BTB (POZ) domain.,similarity:Contains 6 Kelch repeats.,

Nanjing BYabscience technology Co.,Ltd



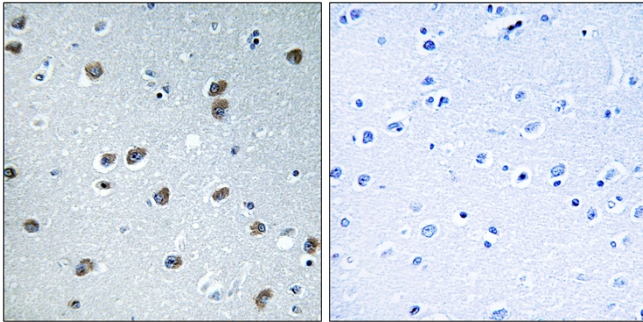
matters needing attention

Avoid repeated freezing and thawing!

Usage suggestions

This product can be used in immunological reaction related experiments. For more information, please consult technical personnel.

Products Images



Immunohistochemistry analysis of paraffin-embedded human brain tissue, using KLHL29 Antibody. The picture on the right is blocked with the synthesized peptide.