



# IFITM3 Polyclonal Antibody

|                           |   |
|---------------------------|---|
| <b>Catalog No</b>         | BYab-03930  |
| <b>Isotype</b>            | IgG   |
| <b>Reactivity</b>         | Human;Rat;Mouse;  |
| <b>Applications</b>       | WB;IF;ELISA   |
| <b>Gene Name</b>          | IFITM3  |
| <b>Protein Name</b>       | Interferon-induced transmembrane protein 3  |
| <b>Immunogen</b>          | The antiserum was produced against synthesized peptide derived from human IFM3. AA range:1-50   |
| <b>Specificity</b>        | IFITM3 Polyclonal Antibody detects endogenous levels of IFITM3 protein.   |
| <b>Formulation</b>        | Liquid in PBS containing 50% glycerol, 0.5% BSA and 0.02% sodium azide.   |
| <b>Source</b>             | Polyclonal, Rabbit,IgG  |
| <b>Purification</b>       | The antibody was affinity-purified from rabbit antiserum by affinity-chromatography using epitope-specific immunogen.   |
| <b>Dilution</b>           | Western Blot: 1/500 - 1/2000. Immunofluorescence: 1/200 - 1/1000. ELISA: 1/40000. Not yet tested in other applications.   |
| <b>Concentration</b>      | 1 mg/ml   |
| <b>Purity</b>             | ≥90%  |
| <b>Storage Stability</b>  | -20°C/1 year  |
| <b>Synonyms</b>           | IFITM3; Interferon-induced transmembrane protein 3; Dispanin subfamily A member 2b; DSPA2b; Interferon-inducible protein 1-8U   |
| <b>Observed Band</b>      | 15kD  |
| <b>Cell Pathway</b>       | Cell membrane ; Single-pass type II membrane protein . Late endosome membrane ; Single-pass type II membrane protein . Early endosome membrane ; Single-pass type II membrane protein. Lysosome membrane ; Single-pass type II membrane protein . Cytoplasm, perinuclear region . Co-localizes with BRI3 isoform 1 at the perinuclear region. . |
| <b>Tissue Specificity</b> | Brain,Cervix,Vascular endothelial cell,   |
| <b>Function</b>           | induction:By alpha and gamma interferons.,similarity:Belongs to the CD225 family.,  |
| <b>Background</b>         | The protein encoded by this gene is an interferon-induced membrane protein that helps confer immunity to influenza A H1N1 virus, West Nile virus, and dengue virus. Two transcript variants, only one of them protein-coding, have been found for this gene. Another variant encoding an N-terminally truncated isoform has                     |

Nanjing BYabscience technology Co.,Ltd



been reported, but the full-length nature of this variant has not been determined. [provided by RefSeq, May 2012],

**matters needing attention**

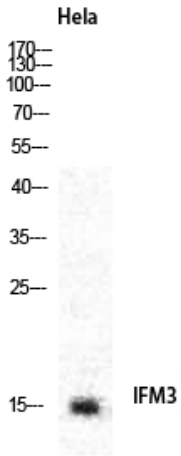
Avoid repeated freezing and thawing!

**Usage suggestions**

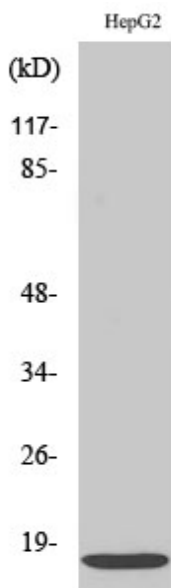
This product can be used in immunological reaction related experiments. For more information, please consult technical personnel.



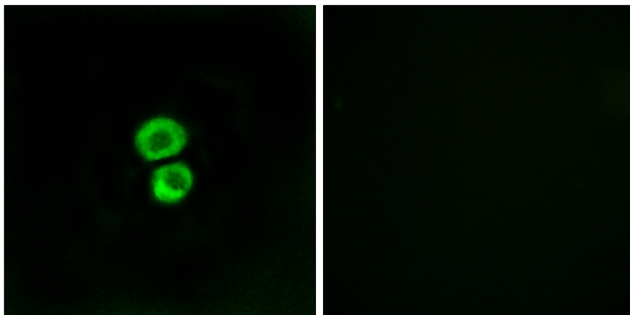
## Products Images



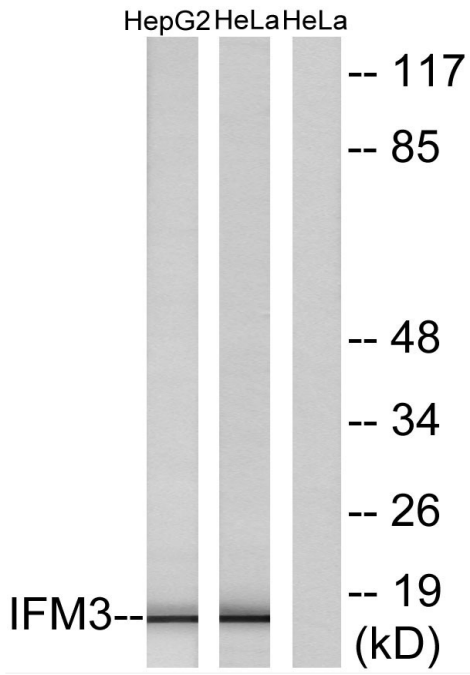
Western Blot analysis of various cells using IFITM3 Polyclonal Antibody diluted at 1:2000



Western Blot analysis of HeLa cells using IFITM3 Polyclonal Antibody diluted at 1:2000



Immunofluorescence analysis of MCF7 cells, using IFM3 Antibody. The picture on the right is blocked with the synthesized peptide.



Western blot analysis of lysates from HepG2 and HeLa cells, using IFM3 Antibody. The lane on the right is blocked with the synthesized peptide.