



# IFIT-5 Polyclonal Antibody

<b>Catalog No</b>	BYab-03929
<b>Isotype</b>	IgG
<b>Reactivity</b>	Human;Rat;Mouse;
<b>Applications</b>	WB;ELISA
<b>Gene Name</b>	IFIT5
<b>Protein Name</b>	Interferon-induced protein with tetratricopeptide repeats 5
<b>Immunogen</b>	The antiserum was produced against synthesized peptide derived from human IFIT5. AA range:281-330
<b>Specificity</b>	IFIT-5 Polyclonal Antibody detects endogenous levels of IFIT-5 protein.
<b>Formulation</b>	Liquid in PBS containing 50% glycerol, 0.5% BSA and 0.02% sodium azide.
<b>Source</b>	Polyclonal, Rabbit,IgG
<b>Purification</b>	The antibody was affinity-purified from rabbit antiserum by affinity-chromatography using epitope-specific immunogen.
<b>Dilution</b>	Western Blot: 1/500 - 1/2000. ELISA: 1/40000. Not yet tested in other applications.
<b>Concentration</b>	1 mg/ml
<b>Purity</b>	≥90%
<b>Storage Stability</b>	-20°C/1 year
<b>Synonyms</b>	IFIT5; ISG58; RI58; Interferon-induced protein with tetratricopeptide repeats 5; IFIT-5; Interferon-induced 58 kDa protein; Retinoic acid- and interferon-inducible 58 kDa protein; P58
<b>Observed Band</b>	50kD
<b>Cell Pathway</b>	Cell projection, ruffle membrane . Colocalized with DDX58/RIG-I at cell surface ruffles. Localizes to actin-rich protrusions from the apical cell surface.
<b>Tissue Specificity</b>	Pancreas,Spleen,
<b>Function</b>	induction:By interferons.,similarity:Belongs to the IFIT family.,similarity:Contains 8 TPR repeats.,
<b>Background</b>	induction:By interferons.,similarity:Belongs to the IFIT family.,similarity:Contains 8 TPR repeats.,
<b>matters needing attention</b>	Avoid repeated freezing and thawing!

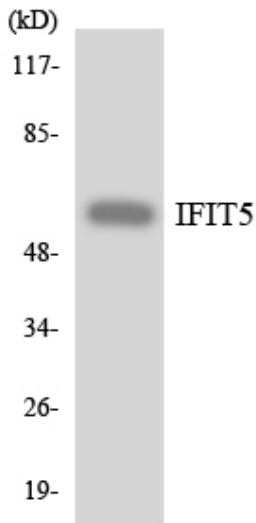
Nanjing BYabscience technology Co.,Ltd



### Usage suggestions

This product can be used in immunological reaction related experiments. For more information, please consult technical personnel.

## Products Images



Western blot analysis of the lysates from HepG2 cells using IFIT5 antibody.