



# IFI-56K Polyclonal Antibody

<b>Catalog No</b>	BYab-03928
<b>Isotype</b>	IgG
<b>Reactivity</b>	Human;Rat;Mouse;
<b>Applications</b>	WB;IHC;IF;ELISA
<b>Gene Name</b>	IFIT1
<b>Protein Name</b>	Interferon-induced protein with tetratricopeptide repeats 1
<b>Immunogen</b>	The antiserum was produced against synthesized peptide derived from human IFIT1. AA range:41-90
<b>Specificity</b>	IFI-56K Polyclonal Antibody detects endogenous levels of IFI-56K protein.
<b>Formulation</b>	Liquid in PBS containing 50% glycerol, 0.5% BSA and 0.02% sodium azide.
<b>Source</b>	Polyclonal, Rabbit,IgG
<b>Purification</b>	The antibody was affinity-purified from rabbit antiserum by affinity-chromatography using epitope-specific immunogen.
<b>Dilution</b>	WB: 1/500 - 1/2000. IHC: 1/100 - 1/300. ELISA: 1/40000.. IF 1:50-200
<b>Concentration</b>	1 mg/ml
<b>Purity</b>	≥90%
<b>Storage Stability</b>	-20°C/1 year
<b>Synonyms</b>	IFIT1; G10P1; IFI56; IFNAI1; ISG56; Interferon-induced protein with tetratricopeptide repeats 1; IFIT-1; Interferon-induced 56 kDa protein; IFI-56K; P56
<b>Observed Band</b>	55kD
<b>Cell Pathway</b>	Cytoplasm .
<b>Tissue Specificity</b>	Prostate,Synovial membrane tissue,
<b>Function</b>	induction:By interferons.,similarity:Belongs to the IFIT family.,similarity:Contains 10 TPR repeats.,
<b>Background</b>	This gene encodes a protein containing tetratricopeptide repeats that was originally identified as induced upon treatment with interferon. The encoded protein may inhibit viral replication and translational initiation. This gene is located in a cluster on chromosome 10 with five other closely related genes. There is a pseudogene for this gene on chromosome 13. Alternatively spliced transcript variants encoding multiple isoforms have been observed. [provided by RefSeq,

Nanjing BYabscience technology Co.,Ltd



Aug 2012],

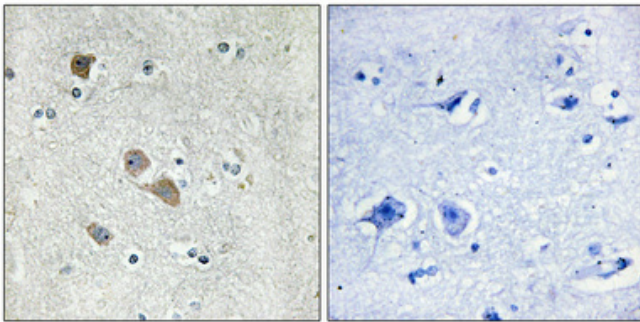
**matters needing attention**

Avoid repeated freezing and thawing!

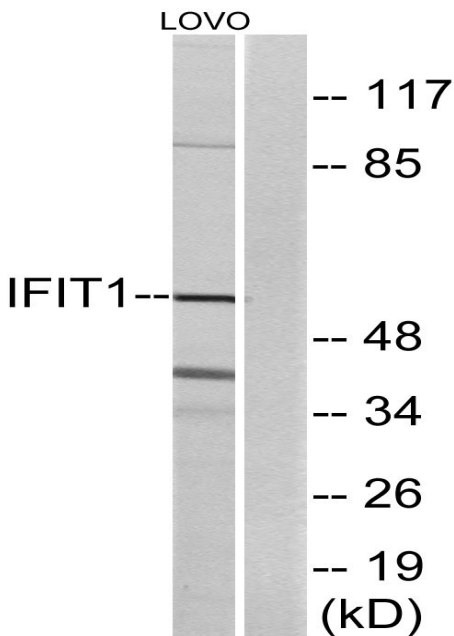
**Usage suggestions**

This product can be used in immunological reaction related experiments. For more information, please consult technical personnel.

## Products Images



Immunohistochemical analysis of paraffin-embedded Human brain. Antibody was diluted at 1:100(4° overnight). High-pressure and temperature Tris-EDTA,pH8.0 was used for antigen retrieval. Negative contrl (right) obtained from antibody was pre-absorbed by immunogen peptide.



Western blot analysis of lysates from LOVO cells, using IFIT1 Antibody. The lane on the right is blocked with the synthesized peptide.