



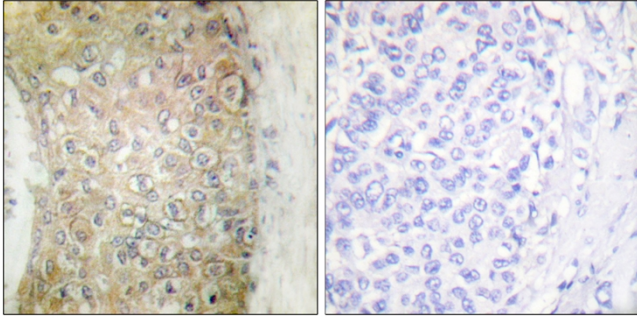
HSP20 Polyclonal Antibody

Catalog No	BYab-03921
Isotype	IgG
Reactivity	Human;Mouse;Rat
Applications	IHC;IF;ELISA
Gene Name	HSPB6
Protein Name	Heat shock protein beta-6
Immunogen	The antiserum was produced against synthesized peptide derived from human HSP20. AA range:5-54
Specificity	HSP20 Polyclonal Antibody detects endogenous levels of HSP20 protein.
Formulation	Liquid in PBS containing 50% glycerol, 0.5% BSA and 0.02% sodium azide.
Source	Polyclonal, Rabbit,IgG
Purification	The antibody was affinity-purified from rabbit antiserum by affinity-chromatography using epitope-specific immunogen.
Dilution	IHC: 1/100 - 1/300. ELISA: 1/5000.. IF 1:50-200
Concentration	1 mg/ml
Purity	≥90%
Storage Stability	-20°C/1 year
Synonyms	HSPB6; Heat shock protein beta-6; HspB6; Heat shock 20 kDa-like protein p20
Observed Band	
Cell Pathway	Cytoplasm . Nucleus . Secreted . Translocates to nuclear foci during heat shock. .
Tissue Specificity	Muscle,Skeletal muscle,Skin,
Function	PTM:The N-terminus is blocked.,similarity:Belongs to the small heat shock protein (HSP20) family.,subunit:May exist as disulfide-linked dimer and monomer.,
Background	This locus encodes a heat shock protein. The encoded protein likely plays a role in smooth muscle relaxation. [provided by RefSeq, Jan 2012],
matters needing attention	Avoid repeated freezing and thawing!
Usage suggestions	This product can be used in immunological reaction related experiments. For more information, please consult technical personnel.

Nanjing BYabscience technology Co.,Ltd



Products Images



Immunohistochemistry analysis of paraffin-embedded human breast carcinoma tissue, using HSP20 Antibody. The picture on the right is blocked with the synthesized peptide.