



HSP β 2 Polyclonal Antibody

Catalog No	BYab-03918
Isotype	IgG
Reactivity	Human;Mouse;Rat
Applications	WB;IHC;IF;ELISA
Gene Name	HSPB2
Protein Name	Heat shock protein beta-2
Immunogen	The antiserum was produced against synthesized peptide derived from human HSPB2. AA range:121-170
Specificity	HSP β 2 Polyclonal Antibody detects endogenous levels of HSP β 2 protein.
Formulation	Liquid in PBS containing 50% glycerol, 0.5% BSA and 0.02% sodium azide.
Source	Polyclonal, Rabbit,IgG
Purification	The antibody was affinity-purified from rabbit antiserum by affinity-chromatography using epitope-specific immunogen.
Dilution	Western Blot: 1/500 - 1/2000. Immunohistochemistry: 1/100 - 1/300. Immunofluorescence: 1/200 - 1/1000. ELISA: 1/40000. Not yet tested in other applications.
Concentration	1 mg/ml
Purity	\geq 90%
Storage Stability	-20°C/1 year
Synonyms	HSPB2; Heat shock protein beta-2; HspB2; DMPK-binding protein; MKBP
Observed Band	24kD
Cell Pathway	Cytoplasm . Nucleus . Localizes to nuclear foci.
Tissue Specificity	Expressed preferentially in skeletal muscle and heart but not in the lens.
Function	similarity:Belongs to the small heat shock protein (HSP20) family.,subunit:Associates specifically with myotonic dystrophy protein kinase (DMPK).,tissue specificity:Expressed preferentially in skeletal muscle and heart but not in the lens.,
Background	The protein encoded by this gene belongs to the superfamily of small heat-shock proteins containing a conservative alpha-crystallin domain at the C-terminal part of the molecule. The protein is expressed preferentially in the heart and skeletal muscle. This protein regulates Myotonic Dystrophy Protein Kinase, which plays an important role in maintenance of muscle structure and function. [provided by

Nanjing BYabscience technology Co.,Ltd



RefSeq, Dec 2012],

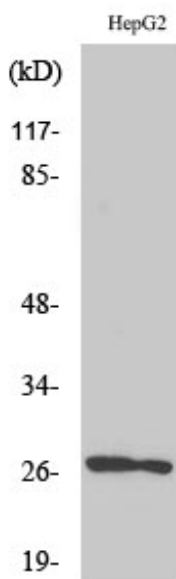
matters needing attention

Avoid repeated freezing and thawing!

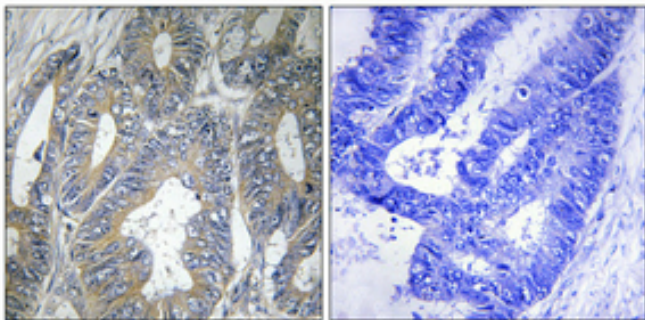
Usage suggestions

This product can be used in immunological reaction related experiments. For more information, please consult technical personnel.

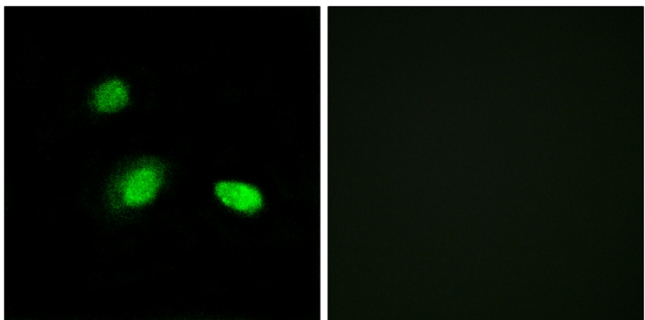
Products Images



Western Blot analysis of various cells using HSP β 2 Polyclonal Antibody

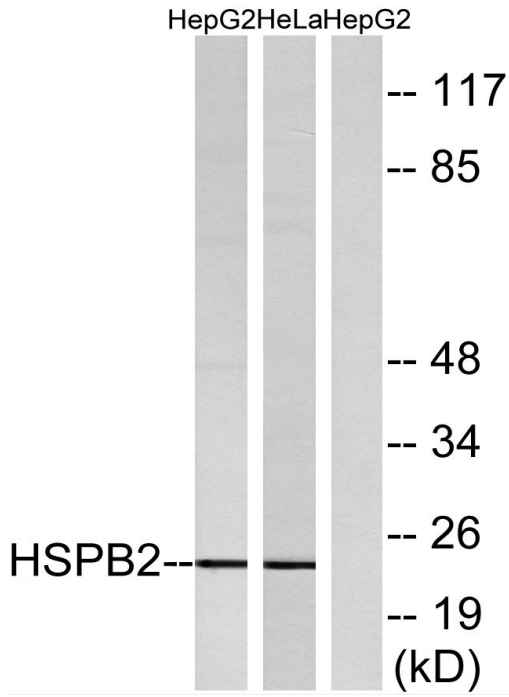


Immunohistochemical analysis of paraffin-embedded Human colon cancer. Antibody was diluted at 1:100(4° overnight). High-pressure and temperature Tris-EDTA,pH8.0 was used for antigen retrieval. Negative contrl (right) obtained from antibody was pre-absorbed by immunogen peptide.

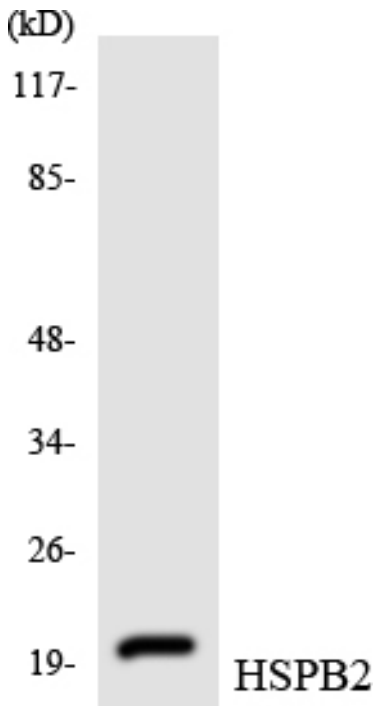


Immunofluorescence analysis of A549 cells, using HSPB2 Antibody. The picture on the right is blocked with the synthesized peptide.

Nanjing BYabscience technology Co.,Ltd



Western blot analysis of lysates from HepG2 and HeLa cells, using HSPB2 Antibody. The lane on the right is blocked with the synthesized peptide.



Western blot analysis of the lysates from HeLa cells using HSPB2 antibody.