



GRB2 Polyclonal Antibody

Catalog No	BYab-03909
Isotype	IgG
Reactivity	Human;Mouse;Rat
Applications	WB;ELISA
Gene Name	GRB2
Protein Name	Growth factor receptor-bound protein 2
Immunogen	The antiserum was produced against synthesized peptide derived from human GRB2. AA range:141-190
Specificity	GRB2 Polyclonal Antibody detects endogenous levels of GRB2 protein.
Formulation	Liquid in PBS containing 50% glycerol, 0.5% BSA and 0.02% sodium azide.
Source	Polyclonal, Rabbit,IgG
Purification	The antibody was affinity-purified from rabbit antiserum by affinity-chromatography using epitope-specific immunogen.
Dilution	Western Blot: 1/500 - 1/2000. ELISA: 1/40000. Not yet tested in other applications.
Concentration	1 mg/ml
Purity	≥90%
Storage Stability	-20°C/1 year
Synonyms	GRB2; ASH; Growth factor receptor-bound protein 2; Adapter protein GRB2; Protein Ash; SH2/SH3 adapter GRB2
Observed Band	32kD
Cell Pathway	Nucleus . Cytoplasm . Endosome . Golgi apparatus .
Tissue Specificity	Brain,Cajal-Retzius cell,Epidermis,Epithelium,Fetal brain cortex,Fe
Function	alternative products:Additional isoforms seem to exist,domain:The SH3 domains mediate interaction with RALGPS1 and SHB.,function:Adapter protein that provides a critical link between cell surface growth factor receptors and the Ras signaling pathway.,function:Isoform GRB3-3 does not bind to phosphorylated epidermal growth factor receptor (EGFR) but inhibits EGF-induced transactivation of a RAS-responsive element. Isoform GRB3-3 acts as a dominant negative protein over GRB2 and by suppressing proliferative signals, may trigger active programmed cell death.,similarity:Belongs to the GRB2/sem-5/DRK family.,similarity:Contains 1 SH2 domain.,similarity:Contains 2 SH3 domains.,subunit:Associates with activated Tyr-phosphorylated EGF receptors

Nanjing BYabscience technology Co.,Ltd



and PDGF receptors via its SH2 domain. Also associates to other cellular Tyr-phosphorylated proteins such as SIT1, IRS1, IRS4, SHC and LNK; probably via

Background

The protein encoded by this gene binds the epidermal growth factor receptor and contains one SH2 domain and two SH3 domains. Its two SH3 domains direct complex formation with proline-rich regions of other proteins, and its SH2 domain binds tyrosine phosphorylated sequences. This gene is similar to the Sem5 gene of C.elegans, which is involved in the signal transduction pathway. Two alternatively spliced transcript variants encoding different isoforms have been found for this gene. [provided by RefSeq, Jul 2008],

matters needing attention

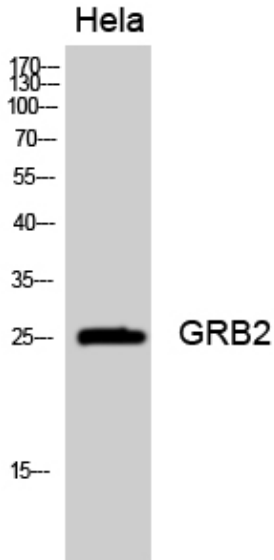
Avoid repeated freezing and thawing!

Usage suggestions

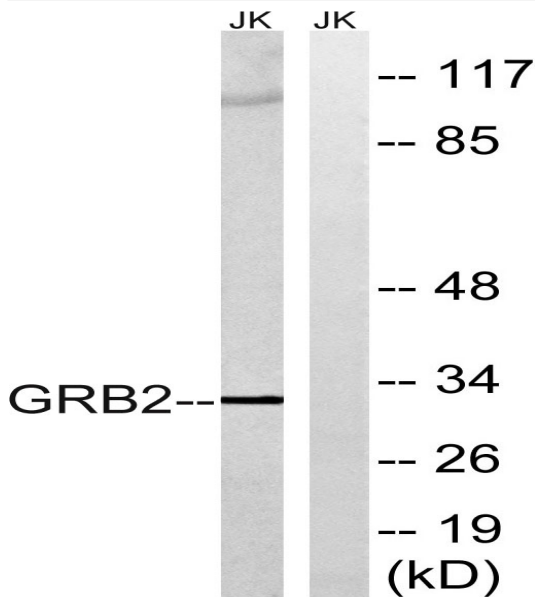
This product can be used in immunological reaction related experiments. For more information, please consult technical personnel.



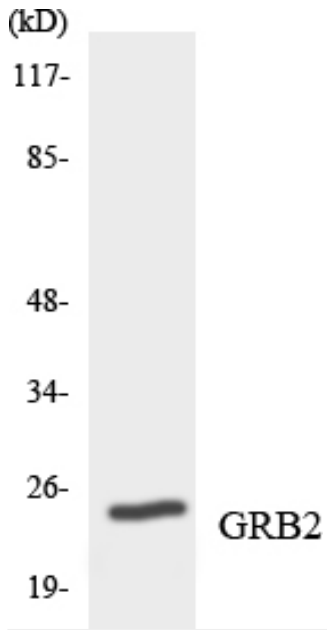
Products Images



Western Blot analysis of HeLa cells using GRB2 Polyclonal Antibody diluted at 1:2000



Western blot analysis of lysates from Jurkat cells, using GRB2 Antibody. The lane on the right is blocked with the synthesized peptide.



Western blot analysis of the lysates from HeLa cells using GRB2 antibody.