



Grap Polyclonal Antibody

Catalog No	BYab-03906
Isotype	IgG
Reactivity	Human;Mouse;Rat
Applications	WB;IHC;IF;ELISA
Gene Name	GRAP
Protein Name	GRB2-related adapter protein
Immunogen	The antiserum was produced against synthesized peptide derived from human GRAP. AA range:1-50
Specificity	Grap Polyclonal Antibody detects endogenous levels of Grap protein.
Formulation	Liquid in PBS containing 50% glycerol, 0.5% BSA and 0.02% sodium azide.
Source	Polyclonal, Rabbit,IgG
Purification	The antibody was affinity-purified from rabbit antiserum by affinity-chromatography using epitope-specific immunogen.
Dilution	WB: 1/500 - 1/2000. IHC: 1/100 - 1/300. ELISA: 1/20000.. IF 1:50-200
Concentration	1 mg/ml
Purity	≥90%
Storage Stability	-20°C/1 year
Synonyms	GRAP; GRB2-related adapter protein
Observed Band	28kD
Cell Pathway	Membrane ; Peripheral membrane protein . Cell junction, synapse . Localizes at the presynaptic terminal. .
Tissue Specificity	Blood,Brain,
Function	function:Couples signals from receptor and cytoplasmic tyrosine kinases to the Ras signaling pathway.,similarity:Belongs to the GRB2/sem-5/DRK family.,similarity:Contains 1 SH2 domain.,similarity:Contains 2 SH3 domains.,subunit:Associates through its SH2 domain with ligand-activated receptors for stem cell factor (KIT) and erythropoietin (EPOR). Also forms a stable complex with the Bcr-Abl oncoprotein. GRAP is associated with the Ras guanine nucleotide exchange factor SOS1, primarily through its N-terminal SH3 domain. Interacts with phosphorylated LAT upon TCR activation. Interacts with SHB.,
Background	This gene encodes a member of the GRB2/Sem5/Drk family and functions as a cytoplasmic signaling protein which contains an SH2 domain flanked by two SH3

Nanjing BYabscience technology Co.,Ltd



domains. The SH2 domain interacts with ligand-activated receptors for stem cell factor and erythropoietin, and facilitates the formation of a stable complex with the BCR-ABL oncoprotein. This protein also associates with the Ras guanine nucleotide exchange factor SOS1 (son of sevenless homolog 1) through its N-terminal SH3 domain. In general, it couples signals from receptor and cytoplasmic tyrosine kinases to the Ras signaling pathway. [provided by RefSeq, Jul 2012],

matters needing attention

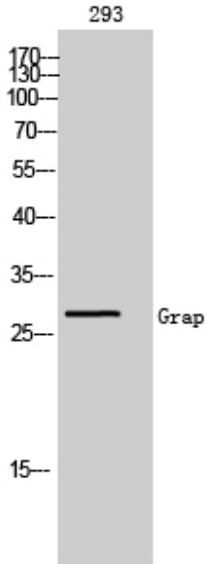
Avoid repeated freezing and thawing!

Usage suggestions

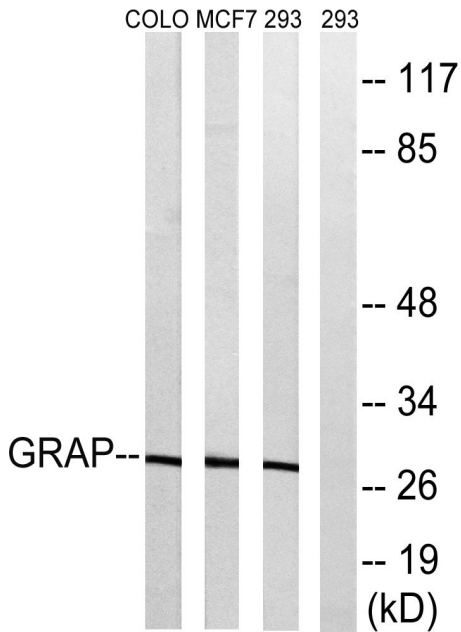
This product can be used in immunological reaction related experiments. For more information, please consult technical personnel.



Products Images



Western Blot analysis of 293 cells using Grap Polyclonal Antibody



Western blot analysis of lysates from 293, MCF-7, COLO cells, using GRAP Antibody. The lane on the right is blocked with the synthesized peptide.