



# Glypican-5 Polyclonal Antibody

<b>Catalog No</b>	BYab-03903
<b>Isotype</b>	IgG
<b>Reactivity</b>	Human;Mouse;Rat
<b>Applications</b>	WB;ELISA
<b>Gene Name</b>	GPC5
<b>Protein Name</b>	Glypican-5
<b>Immunogen</b>	Synthesized peptide derived from the Internal region of human Glypican-5.
<b>Specificity</b>	Glypican-5 Polyclonal Antibody detects endogenous levels of Glypican-5 protein.
<b>Formulation</b>	Liquid in PBS containing 50% glycerol, 0.5% BSA and 0.02% sodium azide.
<b>Source</b>	Polyclonal, Rabbit,IgG
<b>Purification</b>	The antibody was affinity-purified from rabbit antiserum by affinity-chromatography using epitope-specific immunogen.
<b>Dilution</b>	Western Blot: 1/500 - 1/2000. ELISA: 1/40000. Not yet tested in other applications.
<b>Concentration</b>	1 mg/ml
<b>Purity</b>	≥90%
<b>Storage Stability</b>	-20°C/1 year
<b>Synonyms</b>	GPC5; Glypican-5
<b>Observed Band</b>	65kD
<b>Cell Pathway</b>	Cell membrane ; Lipid-anchor, GPI-anchor ; Extracellular side .; [Secreted glypican-5]: Secreted, extracellular space .
<b>Tissue Specificity</b>	In adult, primarily expressed in the brain. Also detected in fetal brain, lung and liver.
<b>Function</b>	function:Cell surface proteoglycan that bears heparan sulfate.,similarity:Belongs to the glypican family.,tissue specificity:In adult, primarily expressed in the brain. Also detected in fetal brain, lung and liver.,
<b>Background</b>	Cell surface heparan sulfate proteoglycans are composed of a membrane-associated protein core substituted with a variable number of heparan sulfate chains. Members of the glypican-related integral membrane proteoglycan family (GRIPS) contain a core protein anchored to the cytoplasmic membrane via a glycosyl phosphatidylinositol linkage. These proteins may play a role in the control of cell division and growth regulation. [provided by RefSeq, Jul 2008],

Nanjing BYabscience technology Co.,Ltd



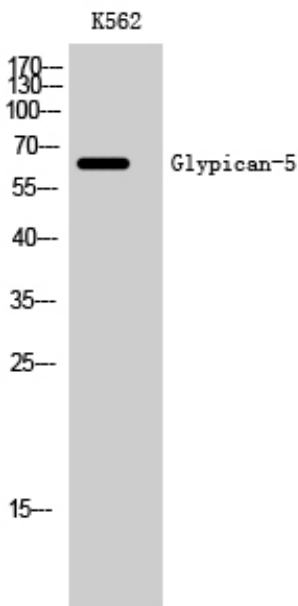
**matters needing attention**

Avoid repeated freezing and thawing!

**Usage suggestions**

This product can be used in immunological reaction related experiments. For more information, please consult technical personnel.

## Products Images



Western Blot analysis of K562 cells using Glypican-5 Polyclonal Antibody