



GCS- β -2 Polyclonal Antibody

Catalog No	BYab-03899
Isotype	IgG
Reactivity	Human;Mouse;Rat
Applications	IHC;IF;ELISA
Gene Name	GUCY1B2
Protein Name	Guanylate cyclase soluble subunit beta-2
Immunogen	The antiserum was produced against synthesized peptide derived from human GCS-beta-2. AA range:53-102
Specificity	GCS- β -2 Polyclonal Antibody detects endogenous levels of GCS- β -2 protein.
Formulation	Liquid in PBS containing 50% glycerol, 0.5% BSA and 0.02% sodium azide.
Source	Polyclonal, Rabbit,IgG
Purification	The antibody was affinity-purified from rabbit antiserum by affinity-chromatography using epitope-specific immunogen.
Dilution	IHC: 1/100 - 1/300. ELISA: 1/10000.. IF 1:50-200
Concentration	1 mg/ml
Purity	$\geq 90\%$
Storage Stability	-20°C/1 year
Synonyms	GUCY1B2; Guanylate cyclase soluble subunit beta-2; GCS-beta-2
Observed Band	70kD
Cell Pathway	Cytoplasm.
Tissue Specificity	Expressed in gastric signet ring cell carcinoma, but not in the normal stomach.
Function	
Background	Nitric oxide-sensitive guanylyl cyclase is a heterodimeric enzyme consisting of an alpha and a beta subunit. The enzyme converts GTP into the second messenger cGMP and plays a major role in the cardiovascular system as a receptor for nitric oxide. Unlike other guanylyl cyclases, GUCY1B2 contains an 86-amino acid C-terminal extension with a consensus sequence for isoprenylation/carboxymethylation.

Nanjing BYabscience technology Co.,Ltd



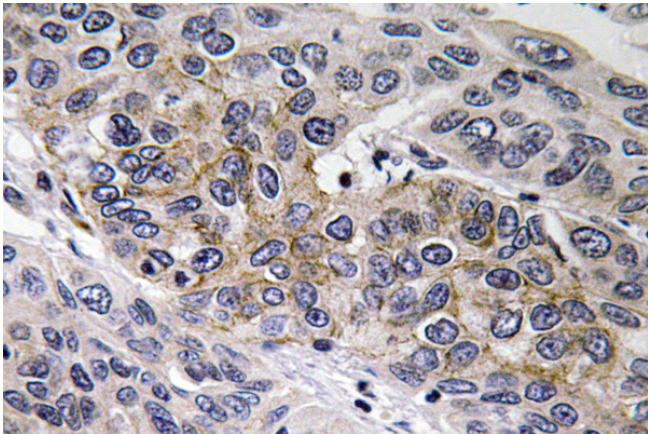
matters needing attention

Avoid repeated freezing and thawing!

Usage suggestions

This product can be used in immunological reaction related experiments. For more information, please consult technical personnel.

Products Images



Immunohistochemistry analysis of GCS- β -2 antibody in paraffin-embedded human lung carcinoma tissue.