



GCS- α -1 Polyclonal Antibody

| | |
|---------------------------|--|
| Catalog No | BYab-03897 |
| Isotype | IgG |
| Reactivity | Human;Mouse;Rat |
| Applications | WB;CoIP;IHC;IF;ELISA |
| Gene Name | GUCY1A3 |
| Protein Name | Guanylate cyclase soluble subunit alpha-3 |
| Immunogen | The antiserum was produced against synthesized peptide derived from human GCS-alpha-1. AA range:374-423 |
| Specificity | GCS- α -1 Polyclonal Antibody detects endogenous levels of GCS- α -1 protein. |
| Formulation | Liquid in PBS containing 50% glycerol, 0.5% BSA and 0.02% sodium azide. |
| Source | Polyclonal, Rabbit,IgG |
| Purification | The antibody was affinity-purified from rabbit antiserum by affinity-chromatography using epitope-specific immunogen. |
| Dilution | WB: 1/500 - 1/2000. IHC: 1/100 - 1/300. ELISA: 1/40000.. IF 1:50-200 |
| Concentration | 1 mg/ml |
| Purity | $\geq 90\%$ |
| Storage Stability | -20°C/1 year |
| Synonyms | GUCY1A3; GUC1A3; GUCSA3; GUCY1A1; Guanylate cyclase soluble subunit alpha-3; GCS-alpha-3; GCS-alpha-1; Soluble guanylate cyclase large subunit |
| Observed Band | 77kD |
| Cell Pathway | Cytoplasm . |
| Tissue Specificity | Detected in brain cortex and lung (at protein level). |
| Function | catalytic activity:GTP = 3',5'-cyclic GMP + diphosphate.,enzyme regulation:Activated by nitric oxide in the presence of magnesium or manganese ions.,miscellaneous:There are two types of guanylate cyclases: soluble forms and membrane-associated receptor forms.,similarity:Belongs to the adenylyl cyclase class-4/guanylyl cyclase family.,similarity:Contains 1 guanylate cyclase domain.,subunit:Heterodimer of an alpha and a beta chain., |
| Background | Soluble guanylate cyclases are heterodimeric proteins that catalyze the conversion of GTP to 3''5''-cyclic GMP and pyrophosphate. The protein encoded by this gene is an alpha subunit of this complex and it interacts with a beta subunit to form the guanylate cyclase enzyme, which is activated by |

Nanjing BYabscience technology Co.,Ltd



nitric oxide. Several transcript variants encoding a few different isoforms have been found for this gene. [provided by RefSeq, Jan 2012],

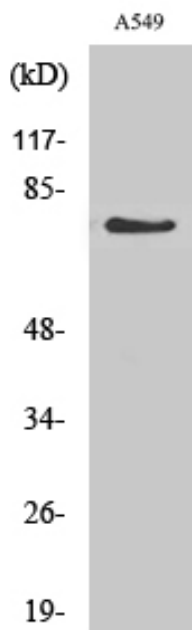
matters needing attention

Avoid repeated freezing and thawing!

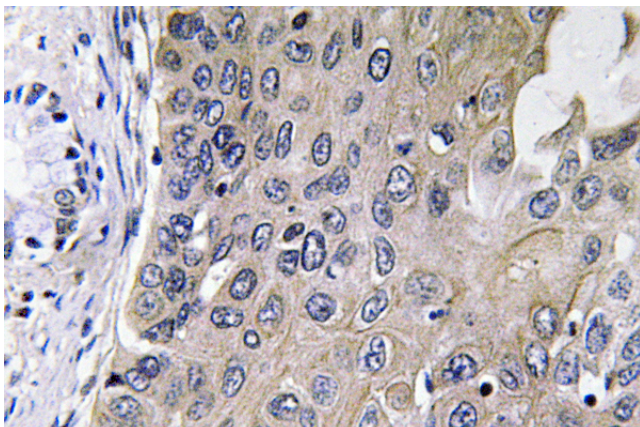
Usage suggestions

This product can be used in immunological reaction related experiments. For more information, please consult technical personnel.

Products Images

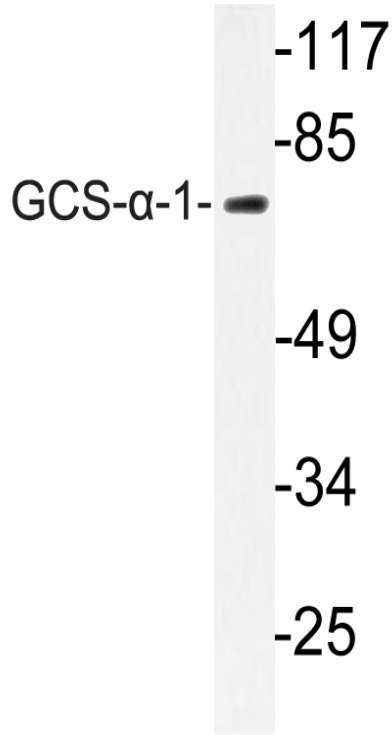


Western Blot analysis of various cells using GCS- α -1 Polyclonal Antibody



Immunohistochemistry analysis of GCS- α -1 antibody in paraffin-embedded human lung carcinoma tissue.

Nanjing BYabscience technology Co.,Ltd



Western blot analysis of lysate from A549 cells, using GCS-α-1 antibody.