



# GCSm- $\gamma$ Polyclonal Antibody

<b>Catalog No</b>	BYab-03896
<b>Isotype</b>	IgG
<b>Reactivity</b>	Human;Mouse;Rat;Monkey
<b>Applications</b>	WB;IHC;IF;ELISA
<b>Gene Name</b>	GCLM
<b>Protein Name</b>	Glutamate--cysteine ligase regulatory subunit
<b>Immunogen</b>	The antiserum was produced against synthesized peptide derived from human GCSm-gamma. AA range:42-91
<b>Specificity</b>	GCSm- $\gamma$ Polyclonal Antibody detects endogenous levels of GCSm- $\gamma$ protein.
<b>Formulation</b>	Liquid in PBS containing 50% glycerol, 0.5% BSA and 0.02% sodium azide.
<b>Source</b>	Polyclonal, Rabbit,IgG
<b>Purification</b>	The antibody was affinity-purified from rabbit antiserum by affinity-chromatography using epitope-specific immunogen.
<b>Dilution</b>	WB: 1/500 - 1/2000. IHC: 1/100 - 1/300. ELISA: 1/10000.. IF 1:50-200
<b>Concentration</b>	1 mg/ml
<b>Purity</b>	$\geq 90\%$
<b>Storage Stability</b>	-20°C/1 year
<b>Synonyms</b>	GCLM; GLCLR; Glutamate--cysteine ligase regulatory subunit; GCS light chain; Gamma-ECS regulatory subunit; Gamma-glutamylcysteine synthetase regulatory subunit; Glutamate--cysteine ligase modifier subunit
<b>Observed Band</b>	31kD
<b>Cell Pathway</b>	cytosol,glutamate-cysteine ligase complex,
<b>Tissue Specificity</b>	In all tissues examined. Highest levels in skeletal muscle.
<b>Function</b>	pathway:Sulfur metabolism; glutathione biosynthesis; glutathione from L-cysteine and L-glutamate: step 1/2.,similarity:Belongs to the aldo/keto reductase family. Glutamate--cysteine ligase light chain subfamily.,subunit:Heterodimer of a catalytic heavy chain and a regulatory light chain.,tissue specificity:In all tissues examined. Highest levels in skeletal muscle.,
<b>Background</b>	Glutamate-cysteine ligase, also known as gamma-glutamylcysteine synthetase, is the first rate limiting enzyme of glutathione synthesis. The enzyme consists of two subunits, a heavy catalytic subunit and a light regulatory subunit. Gamma

Nanjing BYabscience technology Co.,Ltd



glutamylcysteine synthetase deficiency has been implicated in some forms of hemolytic anemia. Alternative splicing results in multiple transcript variants encoding different isoforms. [provided by RefSeq, Apr 2015],

**matters needing attention**

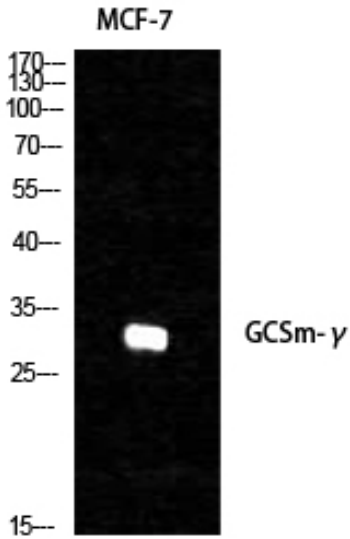
Avoid repeated freezing and thawing!

**Usage suggestions**

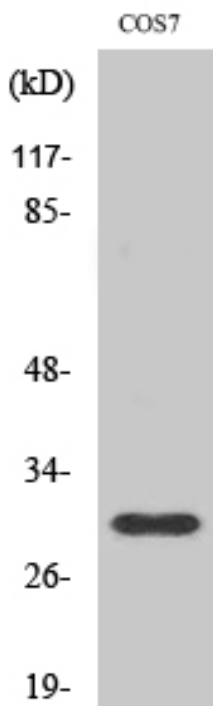
This product can be used in immunological reaction related experiments. For more information, please consult technical personnel.



## Products Images

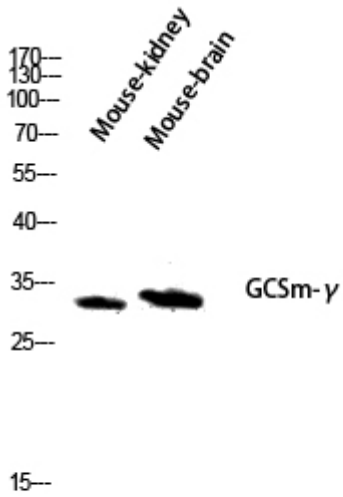


Western Blot analysis of various cells using GCSm- $\gamma$  Polyclonal Antibody diluted at 1:1000

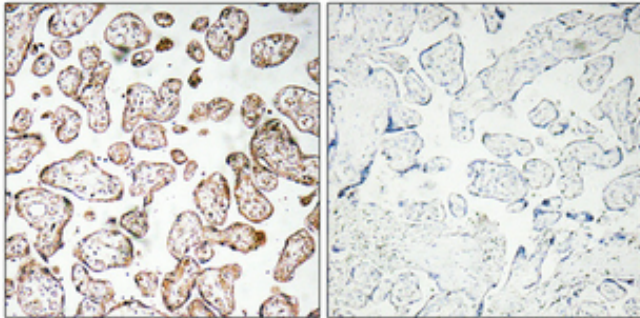


Western Blot analysis of COS7 cells using GCSm- $\gamma$  Polyclonal Antibody diluted at 1:1000

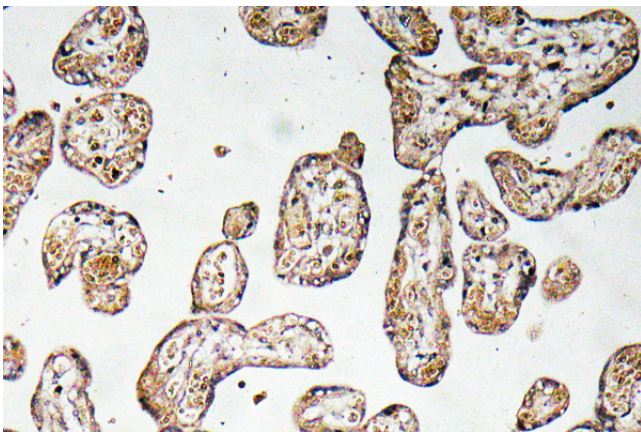
Nanjing BYabscience technology Co.,Ltd



Western blot analysis of Mouse-kidney mouse-brain lysis using GCSm- $\gamma$  antibody. Antibody was diluted at 1:1000



Immunohistochemical analysis of paraffin-embedded Human placenta. Antibody was diluted at 1:100 (4 $^{\circ}$  overnight). High-pressure and temperature Tris-EDTA, pH8.0 was used for antigen retrieval. Negative control (right) obtained from antibody was pre-absorbed by immunogen peptide.



Immunohistochemistry analysis of GCSm- $\gamma$  antibody in paraffin-embedded human prostate carcinoma tissue.