



# GCNT7 Polyclonal Antibody

<b>Catalog No</b>	BYab-03894
<b>Isotype</b>	IgG
<b>Reactivity</b>	Human;Rat;Mouse;
<b>Applications</b>	WB;IHC;IF;ELISA
<b>Gene Name</b>	GCNT7
<b>Protein Name</b>	Beta-1,3-galactosyl-O-glycosyl-glycoprotein beta-1,6-N-acetylglucosaminyltransferase 7
<b>Immunogen</b>	The antiserum was produced against synthesized peptide derived from human GCNT7. AA range:311-360
<b>Specificity</b>	GCNT7 Polyclonal Antibody detects endogenous levels of GCNT7 protein.
<b>Formulation</b>	Liquid in PBS containing 50% glycerol, 0.5% BSA and 0.02% sodium azide.
<b>Source</b>	Polyclonal, Rabbit,IgG
<b>Purification</b>	The antibody was affinity-purified from rabbit antiserum by affinity-chromatography using epitope-specific immunogen.
<b>Dilution</b>	Western Blot: 1/500 - 1/2000. Immunohistochemistry: 1/100 - 1/300. Immunofluorescence: 1/200 - 1/1000. ELISA: 1/40000. Not yet tested in other applications.
<b>Concentration</b>	1 mg/ml
<b>Purity</b>	≥90%
<b>Storage Stability</b>	-20°C/1 year
<b>Synonyms</b>	GCNT7; C20orf105; Beta-1; 3-galactosyl-O-glycosyl-glycoprotein beta-1,6-N-acetylglucosaminyltransferase 7
<b>Observed Band</b>	49kD
<b>Cell Pathway</b>	Golgi apparatus membrane ; Single-pass type II membrane protein .
<b>Tissue Specificity</b>	Testis,
<b>Function</b>	function:Glycosyltransferase.,pathway:Protein modification; protein glycosylation.,sequence caution:Translated as Gln.,similarity:Belongs to the glycosyltransferase 14 family.,
<b>Background</b>	function:Glycosyltransferase.,pathway:Protein modification; protein glycosylation.,sequence caution:Translated as Gln.,similarity:Belongs to the glycosyltransferase 14 family.,

Nanjing BYabscience technology Co.,Ltd



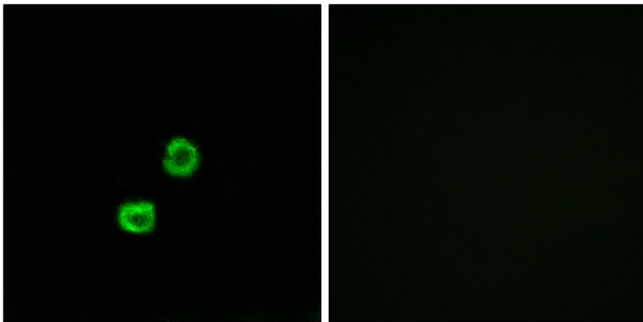
**matters needing attention**

Avoid repeated freezing and thawing!

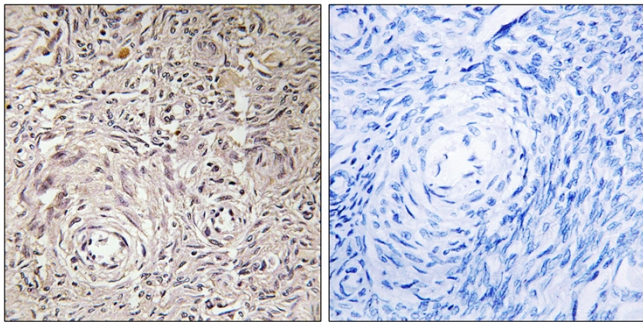
**Usage suggestions**

This product can be used in immunological reaction related experiments. For more information, please consult technical personnel.

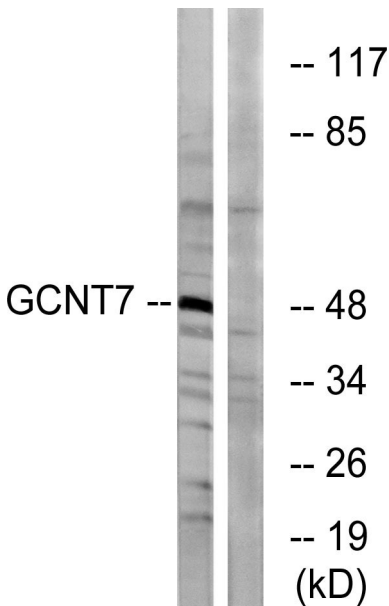
## Products Images



Immunofluorescence analysis of MCF7 cells, using GCNT7 Antibody. The picture on the right is blocked with the synthesized peptide.

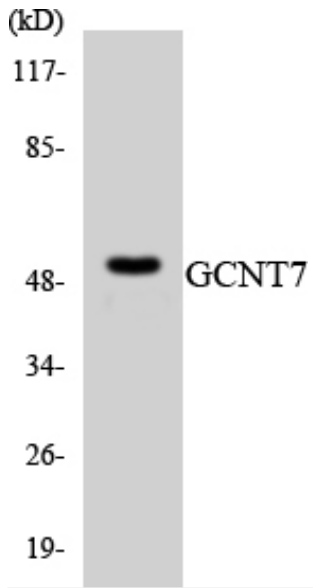


Immunohistochemistry analysis of paraffin-embedded human ovary tissue, using GCNT7 Antibody. The picture on the right is blocked with the synthesized peptide.



Western blot analysis of lysates from K562 cells, using GCNT7 Antibody. The lane on the right is blocked with the synthesized peptide.

Nanjing BYabscience technology Co.,Ltd



Western blot analysis of the lysates from HT-29 cells using GCNT7 antibody.