



GalNAc4ST-1 Polyclonal Antibody

Catalog No	BYab-03889
Isotype	IgG
Reactivity	Human;Mouse;Rat
Applications	WB;ELISA
Gene Name	CHST8
Protein Name	Carbohydrate sulfotransferase 8
Immunogen	The antiserum was produced against synthesized peptide derived from human CHST8. AA range:341-390
Specificity	GalNAc4ST-1 Polyclonal Antibody detects endogenous levels of GalNAc4ST-1 protein.
Formulation	Liquid in PBS containing 50% glycerol, 0.5% BSA and 0.02% sodium azide.
Source	Polyclonal, Rabbit,IgG
Purification	The antibody was affinity-purified from rabbit antiserum by affinity-chromatography using epitope-specific immunogen.
Dilution	Western Blot: 1/500 - 1/2000. ELISA: 1/40000. Not yet tested in other applications.
Concentration	1 mg/ml
Purity	≥90%
Storage Stability	-20°C/1 year
Synonyms	CHST8; Carbohydrate sulfotransferase 8; GalNAc-4-O-sulfotransferase 1; GalNAc-4-ST1; GalNAc4ST-1; N-acetylgalactosamine-4-O-sulfotransferase 1
Observed Band	40kD
Cell Pathway	Golgi apparatus membrane ; Single-pass type II membrane protein .
Tissue Specificity	Predominantly expressed in pituitary gland. In brain, it is expressed in pituitary gland, cerebellum, medulla oblongata, pons, thalamus and spinal cord. Expressed in the epidermis. Expressed at lower level in lung, spleen, adrenal gland, placenta, prostate, testis, mammary gland and trachea.
Function	caution:PubMed:10988300 reports the possible existence of a secreted isoform starting at Met-119. However, they do not provide any experimental evidence.,function:Catalyzes the transfer of sulfate to position 4 of non-reducing N-acetylgalactosamine (GalNAc) residues in both N-glycans and O-glycans. Required for biosynthesis of glycoprotein hormones lutropin and thyrotropin, by mediating sulfation of their carbohydrate structures. Only active against terminal GalNAcbeta1, GalNAcbeta. Not active toward chondroitin.,induction:Down-regulated (17-fold) in prion-infected

Nanjing BYabscience technology Co.,Ltd



cells.,similarity:Belongs to the sulfotransferase 2 family.,tissue
specificity:Predominantly expressed in pituitary gland. In brain, it is expressed in
pituitary gland, cerebellum, medulla oblongata, pons, thalamus and spinal cord.
Expressed at lower level in lung, spleen, adrenal gland, placenta, prostate, testis,
mammary glan

Background

The protein encoded by this gene belongs to the sulfotransferase 2 family. It is predominantly expressed in the pituitary gland, and is localized to the golgi membrane. This protein catalyzes the transfer of sulfate to position 4 of non-reducing N-acetylgalactosamine (GalNAc) residues in both N-glycans and O-glycans. It is responsible for sulfation of GalNAc on luteinizing hormone (LH), which is required for production of the sex hormones. Mice lacking this enzyme, exhibit increased levels of circulating LH, and precocious sexual maturation of both male and female mice. Alternatively spliced transcript variants have been found for this gene. [provided by RefSeq, Aug 2011],

matters needing attention

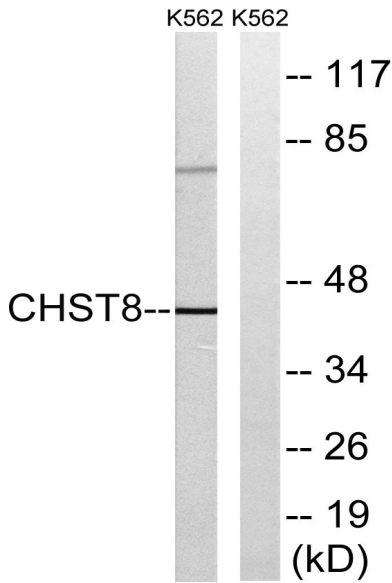
Avoid repeated freezing and thawing!

Usage suggestions

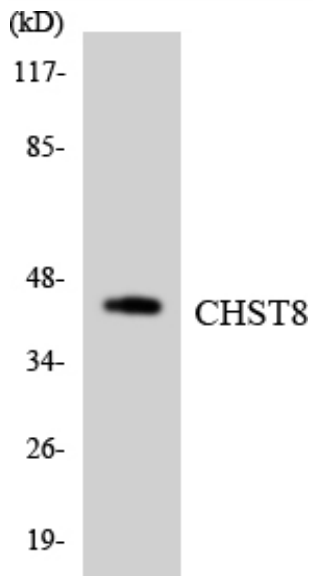
This product can be used in immunological reaction related experiments. For more information, please consult technical personnel.



Products Images



Western blot analysis of lysates from K562 cells, using CHST8 Antibody. The lane on the right is blocked with the synthesized peptide.



Western blot analysis of the lysates from HT-29 cells using CHST8 antibody.