



Fyb Polyclonal Antibody

Catalog No	BYab-03882
Isotype	IgG
Reactivity	Human;Mouse;Rat
Applications	WB;ELISA
Gene Name	FYB
Protein Name	FYN-binding protein
Immunogen	Synthesized peptide derived from Fyb . at AA range: 620-700
Specificity	Fyb Polyclonal Antibody detects endogenous levels of Fyb protein.
Formulation	Liquid in PBS containing 50% glycerol, 0.5% BSA and 0.02% sodium azide.
Source	Polyclonal, Rabbit,IgG
Purification	The antibody was affinity-purified from rabbit antiserum by affinity-chromatography using epitope-specific immunogen.
Dilution	Western Blot: 1/500 - 1/2000. ELISA: 1/40000. Not yet tested in other applications.
Concentration	1 mg/ml
Purity	≥90%
Storage Stability	-20°C/1 year
Synonyms	FYB; SLAP130; FYN-binding protein; Adhesion and degranulation promoting adaptor protein; ADAP; FYB-120/130; p120/p130; FYN-T-binding protein; SLAP-130; SLP-76-associated phosphoprotein
Observed Band	85kD
Cell Pathway	Cytoplasm . Nucleus . Cell junction . Colocalizes with TMEM47 at cell-cell contacts in podocytes. .
Tissue Specificity	Expressed in hematopoietic tissues such as myeloid and T-cells, spleen and thymus. Not expressed in B-cells, nor in non-lymphoid tissues.
Function	function:Acts as an adapter protein of the FYN and LCP2 signaling cascades in T cells. Modulates the expression of interleukin-2 (IL-2). Involved in platelet activation. Prevents the degradation of SKAP1 and SKAP2.,PTM:T-cell receptor ligation leads to increased tyrosine phosphorylation.,similarity:Contains 1 SH3 domain.,subunit:Part of a complex consisting of SKAP2, FYB and PTPNS1. Part of a complex consisting of SKAP2, FYB and LILRB3 (By similarity). Interacts with FYN, LCP2, SKAP1 and SKAP2.,tissue specificity:Expressed in hematopoietic tissues such as myeloid and T-cells, spleen and thymus. Not expressed in B-cells, nor in non-lymphoid tissues.,

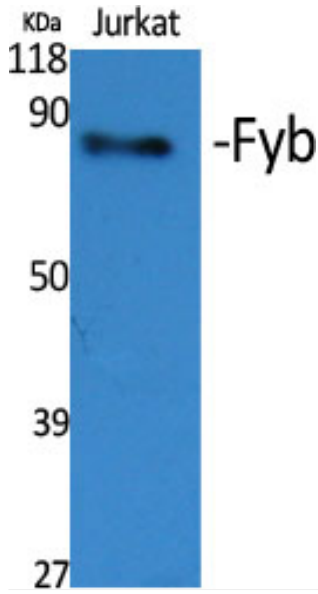
Nanjing BYabscience technology Co.,Ltd



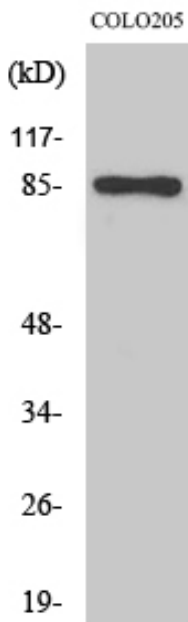
Background	The protein encoded by this gene is an adapter for the FYN protein and LCP2 signaling cascades in T-cells. The encoded protein is involved in platelet activation and controls the expression of interleukin-2. Three transcript variants encoding different isoforms have been found for this gene. [provided by RefSeq, Jul 2011],
matters needing attention	Avoid repeated freezing and thawing!
Usage suggestions	This product can be used in immunological reaction related experiments. For more information, please consult technical personnel.



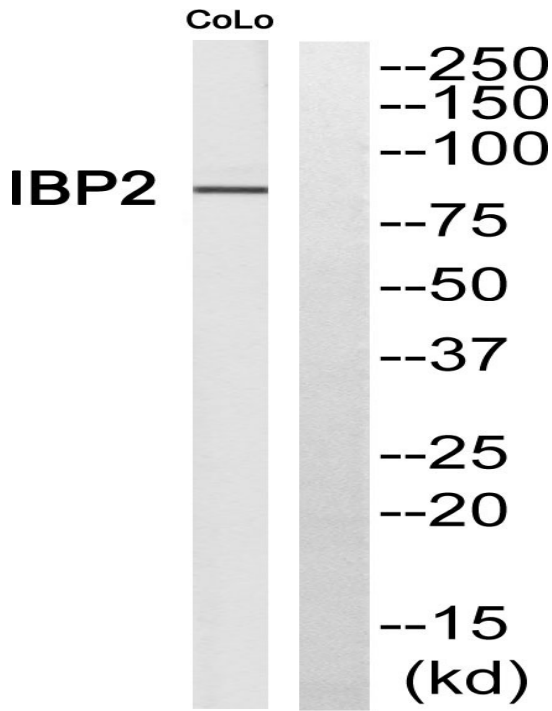
Products Images



Western Blot analysis of various cells using Fyb Polyclonal Antibody



Western Blot analysis of COLO205 cells using Fyb Polyclonal Antibody



Western blot analysis of FYB Antibody. The lane on the right is blocked with the FYB peptide.