



# FUT2 Polyclonal Antibody

<b>Catalog No</b>	BYab-03881
<b>Isotype</b>	IgG
<b>Reactivity</b>	Human;Rat;Mouse;
<b>Applications</b>	IHC;IF;ELISA
<b>Gene Name</b>	FUT2
<b>Protein Name</b>	Galactoside 2-alpha-L-fucosyltransferase 2
<b>Immunogen</b>	Synthesized peptide derived from the Internal region of human FUT2.
<b>Specificity</b>	FUT2 Polyclonal Antibody detects endogenous levels of FUT2 protein.
<b>Formulation</b>	Liquid in PBS containing 50% glycerol, 0.5% BSA and 0.02% sodium azide.
<b>Source</b>	Polyclonal, Rabbit,IgG
<b>Purification</b>	The antibody was affinity-purified from rabbit antiserum by affinity-chromatography using epitope-specific immunogen.
<b>Dilution</b>	IHC: 1/100 - 1/300. ELISA: 1/20000.. IF 1:50-200
<b>Concentration</b>	1 mg/ml
<b>Purity</b>	≥90%
<b>Storage Stability</b>	-20°C/1 year
<b>Synonyms</b>	FUT2; SEC2; Galactoside 2-alpha-L-fucosyltransferase 2; Alpha(1; 2)FT 2; Fucosyltransferase 2; GDP-L-fucose:beta-D-galactoside 2-alpha-L-fucosyltransferase 2; SE2; Secretor blood group alpha-2-fucosyltransferase; Secretor factor; Se
<b>Observed Band</b>	
<b>Cell Pathway</b>	Golgi apparatus, Golgi stack membrane; Single-pass type II membrane protein. Membrane-bound form in trans cisternae of Golgi.
<b>Tissue Specificity</b>	Small intestine, colon and lung.
<b>Function</b>	catalytic activity:GDP-beta-L-fucose + beta-D-galactosyl-(1->3)-N-acetyl-beta-D-glucosaminyl-(1->3)-beta-D-galactosyl-(1->4)-beta-D-glucosyl-(1->1)-ceramide = GDP + alpha-L-fucosyl-(1->2)-beta-D-galactosyl-(1->3)-N-acetyl-beta-D-glucosaminyl-(1->3)-beta-D-galactosyl-(1->4)-beta-D-glucosyl-(1->1)-ceramide.,disease:Genetic variation in FUT2 is associated with vitamin B12 plasma level quantitative trait locus type 1 (B12QTL1) [MIM:612542]. The plasma level of vitamin B12 is a modifiable quantitative trait associated with many diseases. Vitamin B12 found in

Nanjing BYabscience technology Co.,Ltd



meat and milk products is composed of corrin and cobalt rings and is necessary for the formation of red blood cells, DNA synthesis during cell division, and maintenance of the myelin nerve sheath, among other functions. Deficiency in vitamin B12, clinically associated with pernicious anemia, cardiovascular disease, cancer, and neurodege

**Background**

The protein encoded by this gene is a Golgi stack membrane protein that is involved in the creation of a precursor of the H antigen, which is required for the final step in the soluble A and B antigen synthesis pathway. This gene is one of two encoding the galactoside 2-L-fucosyltransferase enzyme. Two transcript variants encoding the same protein have been found for this gene. [provided by RefSeq, Jul 2008],

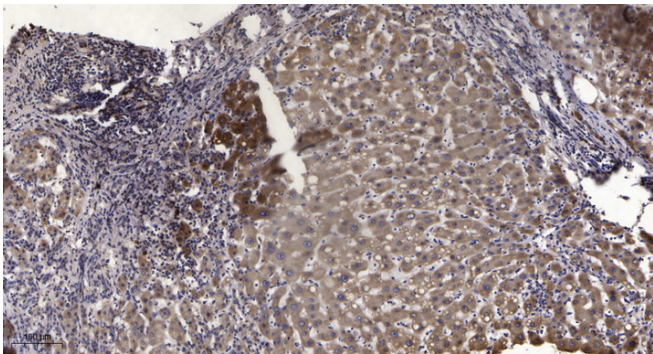
**matters needing attention**

Avoid repeated freezing and thawing!

**Usage suggestions**

This product can be used in immunological reaction related experiments. For more information, please consult technical personnel.

**Products Images**



Immunohistochemical analysis of paraffin-embedded human liver cancer. 1, Antibody was diluted at 1:200(4° overnight). 2, Tris-EDTA,pH9.0 was used for antigen retrieval. 3,Secondary antibody was diluted at 1:200(room temperature, 45min).