



FGF-BP2 Polyclonal Antibody

Catalog No	BYab-03871
Isotype	IgG
Reactivity	Human;Rat;Mouse;
Applications	WB;ELISA
Gene Name	FGFBP2
Protein Name	Fibroblast growth factor-binding protein 2
Immunogen	The antiserum was produced against synthesized peptide derived from human FGFBP2. AA range:170-219
Specificity	FGF-BP2 Polyclonal Antibody detects endogenous levels of FGF-BP2 protein.
Formulation	Liquid in PBS containing 50% glycerol, 0.5% BSA and 0.02% sodium azide.
Source	Polyclonal, Rabbit,IgG
Purification	The antibody was affinity-purified from rabbit antiserum by affinity-chromatography using epitope-specific immunogen.
Dilution	Western Blot: 1/500 - 1/2000. ELISA: 1/40000. Not yet tested in other applications.
Concentration	1 mg/ml
Purity	≥90%
Storage Stability	-20°C/1 year
Synonyms	FGFBP2; KSP37; Fibroblast growth factor-binding protein 2; FGF-BP2; FGF-binding protein 2; FGFBP-2; 37 kDa killer-specific secretory protein; Ksp37; HBp17-related protein; HBp17-RP
Observed Band	37kD
Cell Pathway	Secreted, extracellular space .
Tissue Specificity	Expressed in serum, peripheral leukocytes and cytotoxic T-lymphocytes, but not in granulocytes and monocytes (at protein level).
Function	similarity:Belongs to the fibroblast growth factor-binding protein family.,tissue specificity:Expressed in serum, peripheral leukocytes and cytotoxic T lymphocytes, but not in granulocytes and monocytes (at protein level).,
Background	This gene encodes a member of the fibroblast growth factor binding protein family. The encoded protein is a serum protein that is selectively secreted by cytotoxic lymphocytes and may be involved in cytotoxic lymphocyte-mediated immunity. An increase in the amount of gene product may be associated with atopic asthma and mild extrinsic asthma.[provided by RefSeq Staff, Oct 2008],

Nanjing BYabscience technology Co.,Ltd



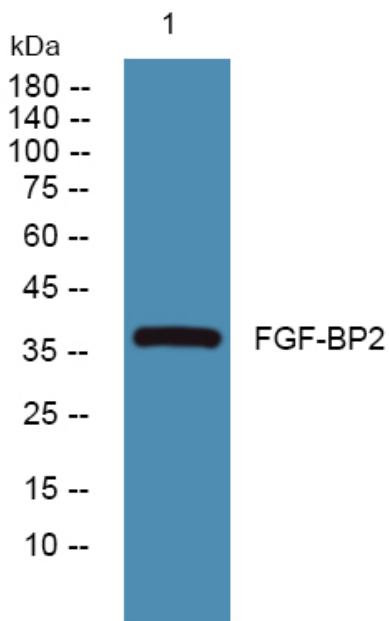
matters needing attention

Avoid repeated freezing and thawing!

Usage suggestions

This product can be used in immunological reaction related experiments. For more information, please consult technical personnel.

Products Images



Western blot analysis of lysates from DU145 cells, primary antibody was diluted at 1:1000, 4° over night