



# ERdj3 Polyclonal Antibody

<b>Catalog No</b>	BYab-03863
<b>Isotype</b>	IgG
<b>Reactivity</b>	Human;Mouse;Rat
<b>Applications</b>	WB;IHC;IF;ELISA
<b>Gene Name</b>	DNAJB11
<b>Protein Name</b>	DnaJ homolog subfamily B member 11
<b>Immunogen</b>	The antiserum was produced against synthesized peptide derived from human DNAJB11. AA range:31-80
<b>Specificity</b>	ERdj3 Polyclonal Antibody detects endogenous levels of ERdj3 protein.
<b>Formulation</b>	Liquid in PBS containing 50% glycerol, 0.5% BSA and 0.02% sodium azide.
<b>Source</b>	Polyclonal, Rabbit,IgG
<b>Purification</b>	The antibody was affinity-purified from rabbit antiserum by affinity-chromatography using epitope-specific immunogen.
<b>Dilution</b>	WB: 1/500 - 1/2000. IHC: 1/100 - 1/300. ELISA: 1/20000.. IF 1:50-200
<b>Concentration</b>	1 mg/ml
<b>Purity</b>	≥90%
<b>Storage Stability</b>	-20°C/1 year
<b>Synonyms</b>	DNAJB11; EDJ; ERJ3; HDJ9; PSEC0121; DnaJ homolog subfamily B member 11; APOBEC1-binding protein 2; ABBP-2; DnaJ protein homolog 9; ER-associated DNAJ; ER-associated Hsp40 co-chaperone; ER-associated dnaJ protein 3; ERdj3; ERj3p; HEDJ; Human
<b>Observed Band</b>	40kD
<b>Cell Pathway</b>	Endoplasmic reticulum lumen . Associated with the ER membrane in a C-terminally epitope-tagged construct.
<b>Tissue Specificity</b>	Widely expressed.
<b>Function</b>	caution:PubMed:11584023 reported a cytosolic, as well as nuclear subcellular location. This result was obtained using an N-terminally GFP-tagged construct which most probably affected signal peptide-driven targeting to the ER. As a consequence, the in vivo relevance of the observed interaction with APOBEC1, a nuclear protein, is dubious. This holds true for the interaction with PWP1.,function:Serves as a co-chaperone for HSPA5. Binds directly to both unfolded proteins that are substrates for ERAD and nascent unfolded peptide

**Nanjing BYabscience technology Co.,Ltd**



chains, but dissociates from the HSPA5-unfolded protein complex before folding is completed. May help recruiting HSPA5 and other chaperones to the substrate. Stimulates HSPA5 ATPase activity.,induction:By ER stress-inducing agents, such as thapsigargin and tunicamycin.,PTM:Contains high-mannose Endo H-sensitive carbohydrates.,PTM:Cys-169, Cys-171, Cys-193 and Cys-196

#### Background

This gene encodes a soluble glycoprotein of the endoplasmic reticulum (ER) lumen that functions as a co-chaperone of binding immunoglobulin protein, a 70 kilodalton heat shock protein chaperone required for the proper folding and assembly of proteins in the ER. The encoded protein contains a highly conserved J domain of about 70 amino acids with a characteristic His-Pro-Asp (HPD) motif and may regulate the activity of binding immunoglobulin protein by stimulating ATPase activity. [provided by RefSeq, Mar 2014],

#### matters needing attention

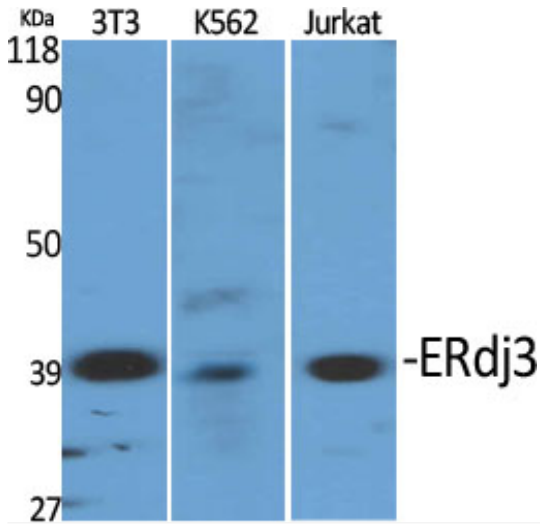
Avoid repeated freezing and thawing!

#### Usage suggestions

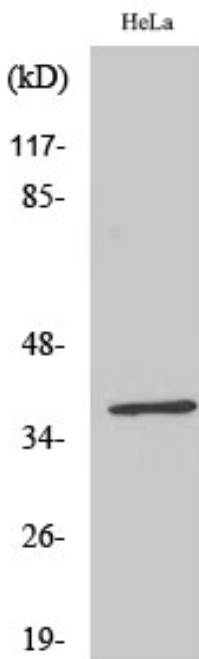
This product can be used in immunological reaction related experiments. For more information, please consult technical personnel.



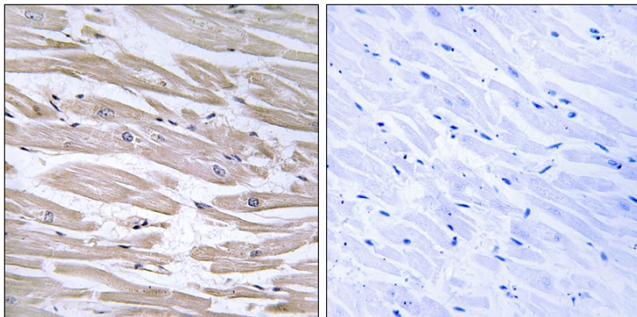
## Products Images



Western Blot analysis of various cells using ERdj3 Polyclonal Antibody diluted at 1:2000

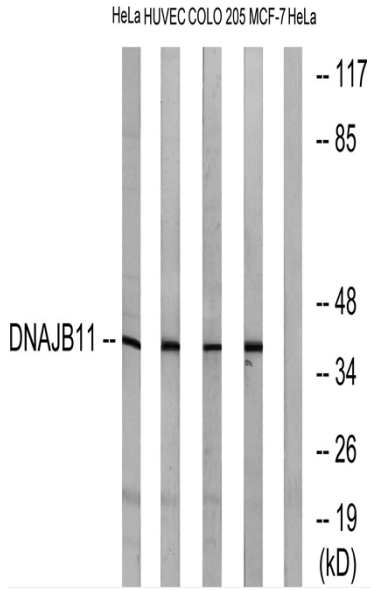


Western Blot analysis of MCF7 cells using ERdj3 Polyclonal Antibody diluted at 1:2000



Immunohistochemistry analysis of paraffin-embedded human heart tissue, using DNAJB11 Antibody. The picture on the right is blocked with the synthesized peptide.

Nanjing BYabscience technology Co.,Ltd



Western blot analysis of lysates from HeLa, HUVEC, COLO, and MCF-7 cells, using DNAJB11 Antibody. The lane on the right is blocked with the synthesized peptide.