



# Eps8L2 Polyclonal Antibody

|                           |   |
|---------------------------|---|
| <b>Catalog No</b>         | BYab-03857  |
| <b>Isotype</b>            | IgG   |
| <b>Reactivity</b>         | Human;Mouse   |
| <b>Applications</b>       | WB;IHC;IF;ELISA   |
| <b>Gene Name</b>          | EPS8L2  |
| <b>Protein Name</b>       | Epidermal growth factor receptor kinase substrate 8-like protein 2  |
| <b>Immunogen</b>          | The antiserum was produced against synthesized peptide derived from human ES8L2. AA range:1-50  |
| <b>Specificity</b>        | Eps8L2 Polyclonal Antibody detects endogenous levels of Eps8L2 protein.   |
| <b>Formulation</b>        | Liquid in PBS containing 50% glycerol, 0.5% BSA and 0.02% sodium azide.   |
| <b>Source</b>             | Polyclonal, Rabbit,IgG  |
| <b>Purification</b>       | The antibody was affinity-purified from rabbit antiserum by affinity-chromatography using epitope-specific immunogen.   |
| <b>Dilution</b>           | Western Blot: 1/500 - 1/2000. Immunohistochemistry: 1/100 - 1/300. Immunofluorescence: 1/200 - 1/1000. ELISA: 1/40000. Not yet tested in other applications.  |
| <b>Concentration</b>      | 1 mg/ml   |
| <b>Purity</b>             | ≥90%  |
| <b>Storage Stability</b>  | -20°C/1 year  |
| <b>Synonyms</b>           | EPS8L2; EPS8R2; PP13181; Epidermal growth factor receptor kinase substrate 8-like protein 2; EPS8-like protein 2; Epidermal growth factor receptor pathway substrate 8-related protein 2; EPS8-related protein 2  |
| <b>Observed Band</b>      | 81kD  |
| <b>Cell Pathway</b>       | Cytoplasm . Cell projection, stereocilium . Localizes at the tips of the stereocilia of the inner and outer hair cells. .   |
| <b>Tissue Specificity</b> | Detected in fibroblasts and placenta.   |
| <b>Function</b>           | function:Stimulates guanine exchange activity of SOS1. May play a role in membrane ruffling and remodeling of the actin cytoskeleton.,similarity:Belongs to the EPS8 family.,similarity:Contains 1 PID domain.,similarity:Contains 1 SH3 domain.,subunit:Interacts with ABI1. Part of a complex that contains SOS1, ABI1 and EPS8L2. Associates with F-actin.,tissue specificity:Detected in fibroblasts and placenta., |

Nanjing BYabscience technology Co.,Ltd



---

**Background**

This gene encodes a member of the EPS8 gene family. The encoded protein, like other members of the family, is thought to link growth factor stimulation to actin organization, generating functional redundancy in the pathways that regulate actin cytoskeletal remodeling. [provided by RefSeq, Dec 2008],

---

**matters needing attention**

Avoid repeated freezing and thawing!

---

**Usage suggestions**

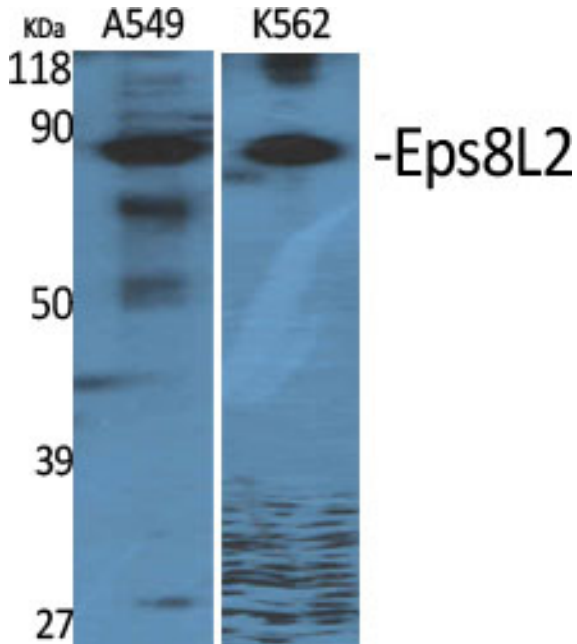
This product can be used in immunological reaction related experiments. For more information, please consult technical personnel.

---

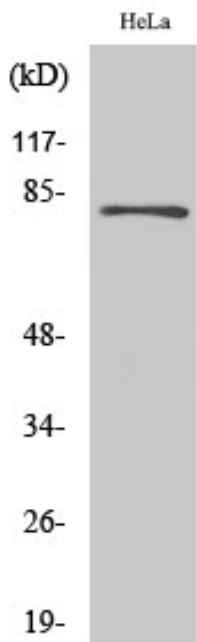
---



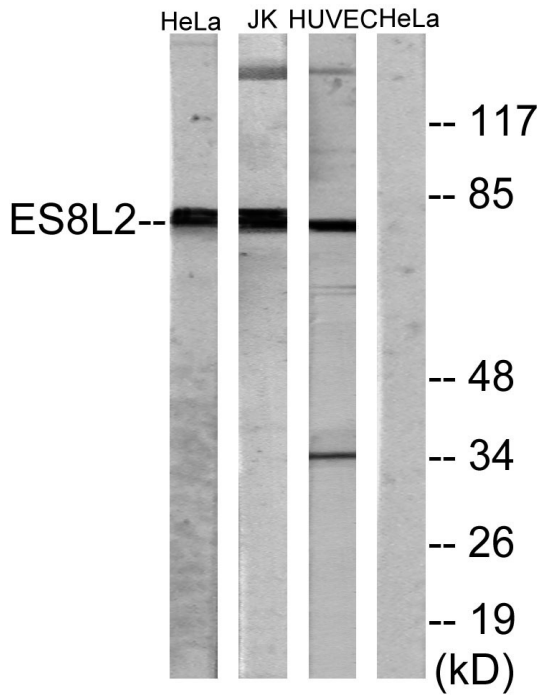
## Products Images



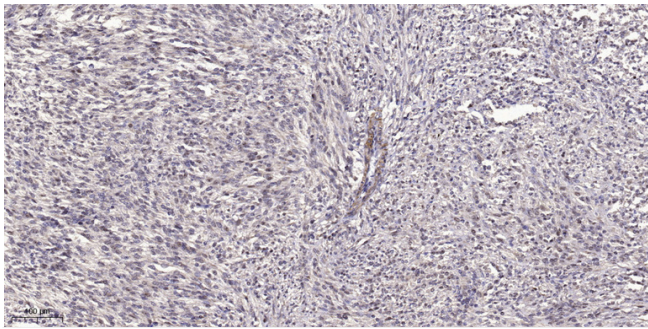
Western Blot analysis of various cells using Eps8L2 Polyclonal Antibody



Western Blot analysis of HuvEc cells using Eps8L2 Polyclonal Antibody



Western blot analysis of lysates from HeLa, Jurkat, and HUVEC cells, using ES8L2 Antibody. The lane on the right is blocked with the synthesized peptide.



Immunohistochemical analysis of paraffin-embedded human small intestinal carcinoma tissue. 1, primary Antibody was diluted at 1:200 (4° overnight). 2, Sodium citrate pH 6.0 was used for antigen retrieval (>98° C, 20min). 3, Secondary antibody was diluted at 1:200