



eIF4E3 Polyclonal Antibody

Catalog No	BYab-03849
Isotype	IgG
Reactivity	Human;Mouse;Rat
Applications	WB;ELISA
Gene Name	EIF4E3
Protein Name	Eukaryotic translation initiation factor 4E type 3
Immunogen	The antiserum was produced against synthesized peptide derived from human EIF4E3. AA range:141-190
Specificity	eIF4E3 Polyclonal Antibody detects endogenous levels of eIF4E3 protein.
Formulation	Liquid in PBS containing 50% glycerol, 0.5% BSA and 0.02% sodium azide.
Source	Polyclonal, Rabbit,IgG
Purification	The antibody was affinity-purified from rabbit antiserum by affinity-chromatography using epitope-specific immunogen.
Dilution	Western Blot: 1/500 - 1/2000. ELISA: 1/10000. Not yet tested in other applications.
Concentration	1 mg/ml
Purity	≥90%
Storage Stability	-20°C/1 year
Synonyms	EIF4E3; Eukaryotic translation initiation factor 4E type 3; eIF-4E type 3; eIF-4E3; eIF4E type 3; eIF4E-3
Observed Band	24kD
Cell Pathway	cytoplasm,cytosol,mRNA cap binding complex,
Tissue Specificity	Brain,
Function	function:Recognizes and binds the 7-methylguanosine-containing mRNA cap during an early step in the initiation of protein synthesis. May act as an inhibitor of EIF4E1 activity.,similarity:Belongs to the eukaryotic initiation factor 4E family.,subunit:eIF4F is a multi-subunit complex, the composition of which varies with external and internal environmental conditions. It is composed of at least eIF4A, eIF4E and eIF4G (By similarity). EIF4E3 interacts with EIF4G1, but not with EIF4EBP1, EIF4EBP2 and EIF4EBP3.,
Background	EIF4E3 belongs to the EIF4E family of translational initiation factors that interact with the 5-prime cap structure of mRNA and recruit mRNA to the ribosome (Joshi

Nanjing BYabscience technology Co.,Ltd



et al., 2004 [PubMed 15153109]).[supplied by OMIM, Mar 2008],

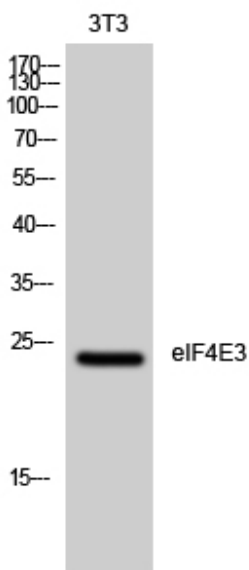
matters needing attention

Avoid repeated freezing and thawing!

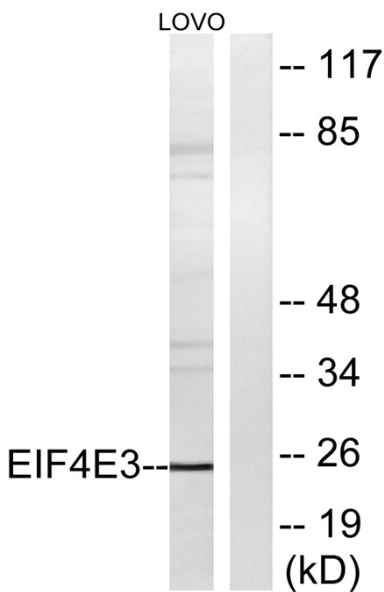
Usage suggestions

This product can be used in immunological reaction related experiments. For more information, please consult technical personnel.

Products Images

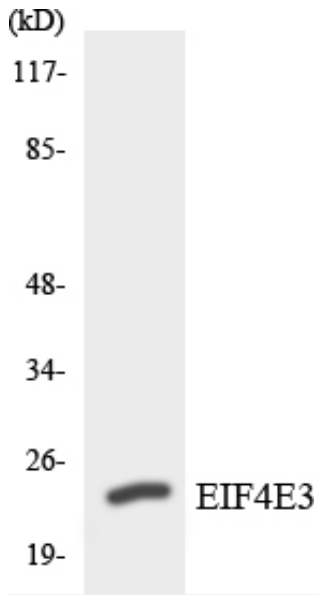


Western Blot analysis of 3T3 cells using eIF4E3 Polyclonal Antibody diluted at 1:1000



Western blot analysis of lysates from LOVO cells, using EIF4E3 Antibody. The lane on the right is blocked with the synthesized peptide.

Nanjing BYabscience technology Co.,Ltd



Western blot analysis of the lysates from HepG2 cells using EIF4E3 antibody.