



eIF3 ζ Polyclonal Antibody

Catalog No	BYab-03846
Isotype	IgG
Reactivity	Human;Mouse
Applications	WB;IHC;IF;ELISA
Gene Name	EIF3D
Protein Name	Eukaryotic translation initiation factor 3 subunit D
Immunogen	The antiserum was produced against synthesized peptide derived from human EIF3D. AA range:101-150
Specificity	eIF3 ζ Polyclonal Antibody detects endogenous levels of eIF3 ζ protein.
Formulation	Liquid in PBS containing 50% glycerol, 0.5% BSA and 0.02% sodium azide.
Source	Polyclonal, Rabbit,IgG
Purification	The antibody was affinity-purified from rabbit antiserum by affinity-chromatography using epitope-specific immunogen.
Dilution	WB: 1/500 - 1/2000. IHC: 1/100 - 1/300. ELISA: 1/40000.. IF 1:50-200
Concentration	1 mg/ml
Purity	≥90%
Storage Stability	-20°C/1 year
Synonyms	EIF3D; EIF3S7; Eukaryotic translation initiation factor 3 subunit D; eIF3d; Eukaryotic translation initiation factor 3 subunit 7; eIF-3-zeta; eIF3 p66
Observed Band	64kD
Cell Pathway	Cytoplasm .
Tissue Specificity	Brain,Liver,Lung,Muscle,Platelet,Skin,Uterus,
Function	function:Component of the eukaryotic translation initiation factor 3 (eIF-3) complex, which is required for several steps in the initiation of protein synthesis. The eIF-3 complex associates with the 40S ribosome and facilitates the recruitment of eIF-1, eIF-1A, eIF-2:GTP:methionyl-tRNA _i and eIF-5 to form the 43S preinitiation complex (43S PIC). The eIF-3 complex stimulates mRNA recruitment to the 43S PIC and scanning of the mRNA for AUG recognition. The eIF-3 complex is also required for disassembly and recycling of posttermination ribosomal complexes and subsequently prevents premature joining of the 40S and 60S ribosomal subunits prior to initiation.,mass spectrometry: PubMed:17322308,mass spectrometry: PubMed:18599441,PTM:Phosphorylated

Nanjing BYabscience technology Co.,Ltd



upon DNA damage, probably by ATM or ATR.,similarity:Belongs to the eIF-3 subunit D family.,subunit:Component of the eukaryotic translation initiation

Background

Eukaryotic translation initiation factor-3 (eIF3), the largest of the eIFs, is a multiprotein complex composed of at least ten nonidentical subunits. The complex binds to the 40S ribosome and helps maintain the 40S and 60S ribosomal subunits in a dissociated state. It is also thought to play a role in the formation of the 40S initiation complex by interacting with the ternary complex of eIF2/GTP/methionyl-tRNA, and by promoting mRNA binding. The protein encoded by this gene is the major RNA binding subunit of the eIF3 complex. [provided by RefSeq, Jul 2008],

matters needing attention

Avoid repeated freezing and thawing!

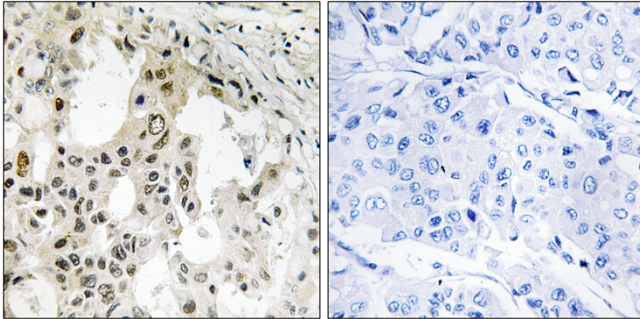
Usage suggestions

This product can be used in immunological reaction related experiments. For more information, please consult technical personnel.

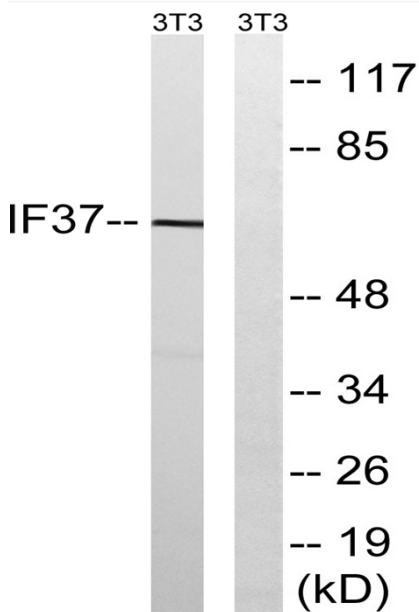
Nanjing BYabscience technology Co.,Ltd



Products Images



Immunohistochemistry analysis of paraffin-embedded human breast carcinoma tissue, using EIF3D Antibody. The picture on the right is blocked with the synthesized peptide.



Western blot analysis of lysates from NIH/3T3 cells, using EIF3D Antibody. The lane on the right is blocked with the synthesized peptide.