



# EDEM2 Polyclonal Antibody

<b>Catalog No</b>	BYab-03834
<b>Isotype</b>	IgG
<b>Reactivity</b>	Human;Rat;Mouse;
<b>Applications</b>	IHC;IF;ELISA
<b>Gene Name</b>	EDEM2
<b>Protein Name</b>	ER degradation-enhancing alpha-mannosidase-like 2
<b>Immunogen</b>	Synthesized peptide derived from the C-terminal region of human EDEM2.
<b>Specificity</b>	EDEM2 Polyclonal Antibody detects endogenous levels of EDEM2 protein.
<b>Formulation</b>	Liquid in PBS containing 50% glycerol, 0.5% BSA and 0.02% sodium azide.
<b>Source</b>	Polyclonal, Rabbit,IgG
<b>Purification</b>	The antibody was affinity-purified from rabbit antiserum by affinity-chromatography using epitope-specific immunogen.
<b>Dilution</b>	IHC: 1/100 - 1/300. ELISA: 1/10000.. IF 1:50-200
<b>Concentration</b>	1 mg/ml
<b>Purity</b>	≥90%
<b>Storage Stability</b>	-20°C/1 year
<b>Synonyms</b>	EDEM2; C20orf31; C20orf49; ER degradation-enhancing alpha-mannosidase-like 2
<b>Observed Band</b>	
<b>Cell Pathway</b>	Endoplasmic reticulum lumen .
<b>Tissue Specificity</b>	Expressed ubiquitously in all tissues tested with slightly higher levels detected in small intestine and peripheral blood leukocytes and weakest levels in brain and skeletal muscle.
<b>Function</b>	similarity:Belongs to the glycosyl hydrolase 47 family.,
<b>Background</b>	In the endoplasmic reticulum (ER), misfolded proteins are retrotranslocated to the cytosol and degraded by the proteasome in a process known as ER-associated degradation (ERAD). EDEM2 belongs to a family of proteins involved in ERAD of glycoproteins (Mast et al., 2005 [PubMed 15537790]).[supplied by OMIM, Mar 2008],

Nanjing BYabscience technology Co.,Ltd



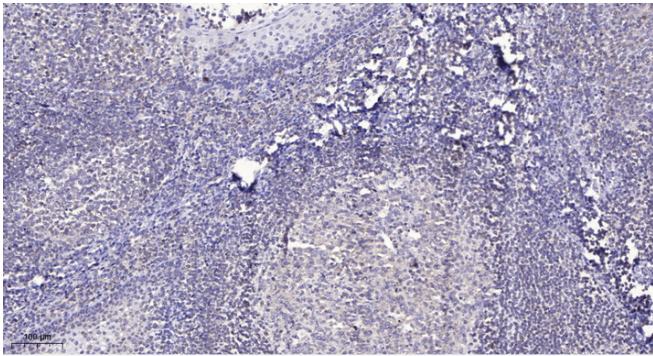
**matters needing attention**

Avoid repeated freezing and thawing!

**Usage suggestions**

This product can be used in immunological reaction related experiments. For more information, please consult technical personnel.

## Products Images



Immunohistochemical analysis of paraffin-embedded human tonsil. 1, Antibody was diluted at 1:200(4° overnight). 2, Tris-EDTA,pH9.0 was used for antigen retrieval. 3,Secondary antibody was diluted at 1:200(room temperature, 30min).