



Dvl-3 Polyclonal Antibody

Catalog No	BYab-03830
Isotype	IgG
Reactivity	Human;Mouse
Applications	WB;IHC;IF;ELISA
Gene Name	DVL3
Protein Name	Segment polarity protein dishevelled homolog DVL-3
Immunogen	The antiserum was produced against synthesized peptide derived from human DVL3. AA range:326-375
Specificity	Dvl-3 Polyclonal Antibody detects endogenous levels of Dvl-3 protein.
Formulation	Liquid in PBS containing 50% glycerol, 0.5% BSA and 0.02% sodium azide.
Source	Polyclonal, Rabbit,IgG
Purification	The antibody was affinity-purified from rabbit antiserum by affinity-chromatography using epitope-specific immunogen.
Dilution	WB: 1/500 - 1/2000. IHC: 1/100 - 1/300. ELISA: 1/20000.. IF 1:50-200
Concentration	1 mg/ml
Purity	≥90%
Storage Stability	-20°C/1 year
Synonyms	DVL3; KIAA0208; Segment polarity protein dishevelled homolog DVL-3; Dishevelled-3; DSH homolog 3
Observed Band	
Cell Pathway	Cytoplasm .
Tissue Specificity	Bone marrow,Brain,Hippocampus,Placenta,Uterus,
Function	function:May play a role in the signal transduction pathway mediated by multiple Wnt genes.,similarity:Belongs to the DSH family.,similarity:Contains 1 DEP domain.,similarity:Contains 1 DIX domain.,similarity:Contains 1 PDZ (DHR) domain.,subunit:Interacts (via the PDZ domain) with the C-terminal regions of VANGL1 and VANGL2 (By similarity). Interacts (via the region containing both the PDZ and DEP domains) with LRRFIP2; the DIX domain may inhibit this interaction.,
Background	This gene is a member of a multi-gene family which shares strong similarity with the Drosophila dishevelled gene, dsh. The Drosophila dishevelled gene encodes a cytoplasmic phosphoprotein that regulates cell proliferation. [provided by

Nanjing BYabscience technology Co.,Ltd



RefSeq, Jul 2008],

matters needing attention

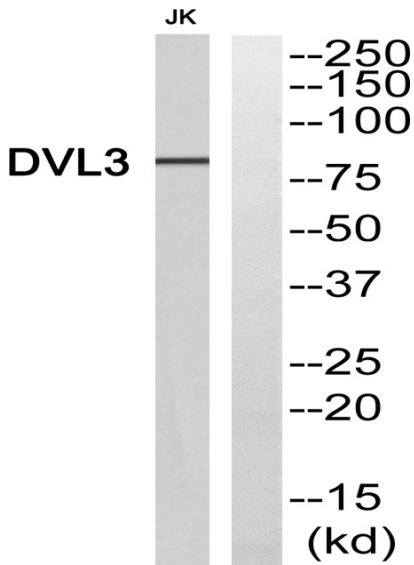
Avoid repeated freezing and thawing!

Usage suggestions

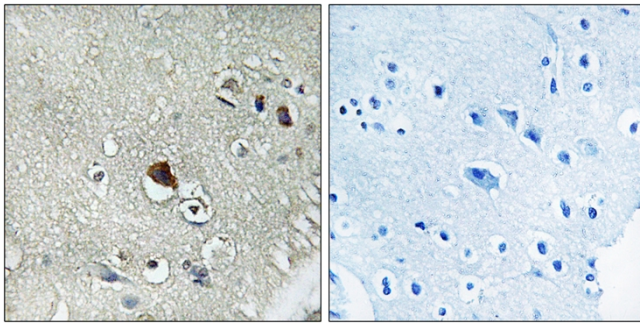
This product can be used in immunological reaction related experiments. For more information, please consult technical personnel.



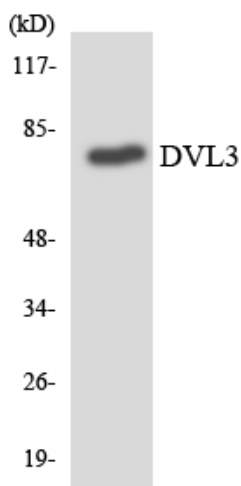
Products Images



Western blot analysis of DVL3 Antibody. The lane on the right is blocked with the DVL3 peptide.



Immunohistochemistry analysis of paraffin-embedded human brain tissue, using DVL3 Antibody. The picture on the right is blocked with the synthesized peptide.



Western blot analysis of the lysates from Jurkat cells using DVL3 antibody.