



DSCR 1 Polyclonal Antibody

Catalog No	BYab-03827
Isotype	IgG
Reactivity	Human;Mouse;Rat
Applications	WB;ELISA
Gene Name	RCAN1
Protein Name	Calcipressin-1
Immunogen	The antiserum was produced against synthesized peptide derived from human RCAN1. AA range:201-250
Specificity	DSCR 1 Polyclonal Antibody detects endogenous levels of DSCR 1 protein.
Formulation	Liquid in PBS containing 50% glycerol, 0.5% BSA and 0.02% sodium azide.
Source	Polyclonal, Rabbit,IgG
Purification	The antibody was affinity-purified from rabbit antiserum by affinity-chromatography using epitope-specific immunogen.
Dilution	Western Blot: 1/500 - 1/2000. ELISA: 1/10000. Not yet tested in other applications.
Concentration	1 mg/ml
Purity	≥90%
Storage Stability	-20°C/1 year
Synonyms	RCAN1; ADAPT78; CSP1; DSC1; DSCR1; Calcipressin-1; Adapt78; Down syndrome critical region protein 1; Myocyte-enriched calcineurin-interacting protein 1; MCIP1; Regulator of calcineurin 1
Observed Band	22kD
Cell Pathway	intracellular,nucleus,cytoplasm,
Tissue Specificity	Highly expressed heart, brain and skeletal muscle. Also expressed in all other tissues.
Function	function:Inhibits calcineurin-dependent transcriptional responses by binding to the catalytic domain of calcineurin A. Could play a role during central nervous system development.,induction:By calcium.,similarity:Belongs to the RCAN family.,tissue specificity:Highly expressed heart, brain and skeletal muscle. Also expressed in all other tissues.,
Background	The protein encoded by this gene interacts with calcineurin A and inhibits calcineurin-dependent signaling pathways, possibly affecting central nervous system development. This gene is located in the minimal candidate region for the

Nanjing BYabscience technology Co.,Ltd



Down syndrome phenotype, and is overexpressed in the brain of Down syndrome fetuses. Chronic overexpression of this gene may lead to neurofibrillary tangles such as those associated with Alzheimer disease. Alternative splicing results in multiple transcript variants. [provided by RefSeq, Nov 2013],

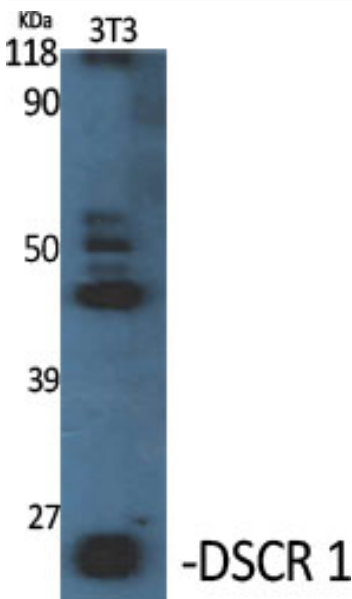
matters needing attention

Avoid repeated freezing and thawing!

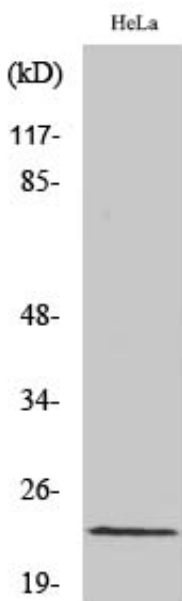
Usage suggestions

This product can be used in immunological reaction related experiments. For more information, please consult technical personnel.

Products Images

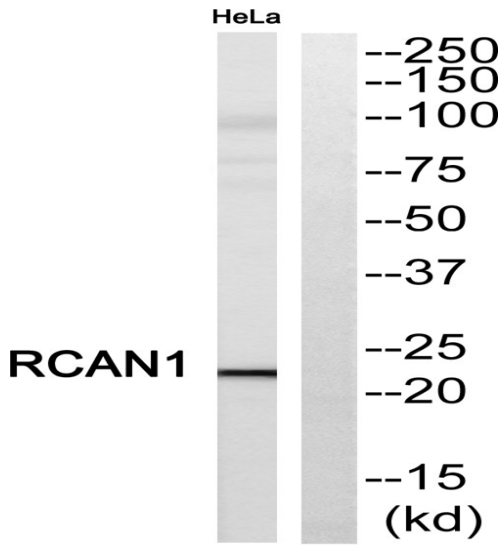


Western Blot analysis of various cells using DSCR 1 Polyclonal Antibody diluted at 1:1000

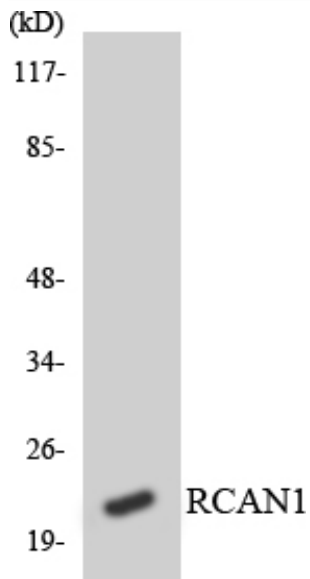


Western Blot analysis of HeLa cells using DSCR 1 Polyclonal Antibody diluted at 1:1000

Nanjing BYabscience technology Co.,Ltd



Western blot analysis of RCAN1 Antibody. The lane on the right is blocked with the RCAN1 peptide.



Western blot analysis of the lysates from HT-29 cells using RCAN1 antibody.